

YOUR FREE COPY

THE *Eneabba*

SUMMER 2024 ISSUE 15



On Country We Stand United

BROOKS AND OLIVE BRANCH FORM JOINT VENTURE

HIRE | ACCESS | AIRWAYS | CRANES | EQUIPMENT SALES | FINANCE | SITE SERVICES | TRANSPORT

BROOKS

The story of Eneabba



When 23-year-old Doug Brooks recognised an opportunity to hire out equipment to the mining industry in WA in 1979, he knew it was something he had to pursue. Doug scrambled together every dollar he had, to purchase two disassembled compressors, with the remainder of the bill being settled by bankcard. He opened 'Brooks Hire Service' and ran the business from a shed in the remote WA town of Eneabba. All the while, Doug was living in a 'humpy' at the rear of the shed. There were many that warned him of the difficulty of starting a new business in a very competitive industry, but Doug was determined and it was only a matter of time before he was turning a profit on his compressors. What started as two compressors on hire, soon turned into twelve pumps on hire, but the turning point came when Doug purchased his first piece of mobile equipment: an eight tonne JEC crane. There are many great stories that came out of that shed in Eneabba. It was the foundation of Brooks Hire and the place where all of the 'hard yards' were done. Eneabba is remembered as the birth place of Brooks Hire Service.



From the MD...

Looking back at 2023, it was a big year (I know this is usually the case!) for the Brooks family, and when I say family, that includes our staff. In March, Dad won the EY Entrepreneur of the Year People's Choice Award. In May, Brooks Hire was selected as a finalist in the prestigious Hire and Rental Industry of Australia (HRIA) Awards. Also in May, we had three staff members nominated for the CCF WA Industry Awards, as well as being nominated as Supplier of the Year. In July, one of our apprentices in Darwin was nominated for the CCF NT Industry Awards. Then, to top it all off, Brooks Hire won Established Family Business WA at the Family Business Association's Excellence Awards. It's an honour to be recognised for our hard work, and it's great to see our staff being recognised for their achievements.

Divisionally, Brooks Hire and Site Services finished the year with a record high turnover, and Brooks Access maintained almost 80% utilisation throughout the year. Brooks Transport completed their most challenging and heaviest moves to date, Brooks Finance has the largest pipeline of leads since inception, and Brooks Equipment added several additional categories of machinery for sale and service.

Looking forward to what's ahead in 2024, we have some exciting prospects in the pipeline, increasing our mining equipment and mining service capabilities. We are also starting a new parts business unit.

On the mining front, Brooks has recently purchased our largest mining equipment: three XCMG XE1350 excavators. These 121 tonne machines are available for hire and sale through Brooks Equipment, or through a hire to purchase agreement. We have also expanded our fleet of 6.5m³ bucket size loaders through purchasing several LW1200KN machines from the XCMG manufacturer. This is just the start of our mining equipment: there will be plenty more big machines rolling through our gates in 2024.

Additionally, we have some big news for Brooks Airways, with the purchase of a Beech 1900, 19-seat aircraft. This will increase our capability to deliver corporate charters, and FIFO flights to the mining industry around Australia. Settlement of the aircraft is well underway, and you should see its yellow tail up in the air soon.

Stuart Brooks
Managing Director

THE Eneabba

SUMMER 2024

contents



03 On Country We Stand United

Brooks forms Joint Venture with OBR



09 Cable Beach Calling

Brooks rolls into Broome



13 Made in Italy

We visit Italy to find the highest quality products



05 Heavy Metal Magic

Bulk Metal Recyclers turns trash into cash



10 Money of Mine

The new voice in mining and finance media



15 Family Business Excellence

Brooks wins Established Family Business WA award



19 New Equipment

Take a look at what's been rolling in



23 Events and Exhibitions

Out and about with Brooks

27 Welcome Aboard

Meet the new faces at Brooks

31 The Puzzler Page

Flex your brain over a cup of coffee

35 Equipment Hire List

View our entire fleet with specs



07 From Ground Zero

A formula for success



11 Our Future Mining Exports

WASM Wombats showcase unmatched skill



17 A Day on the Green

Golfing for MATES in Construction



21 Christmas Celebrations

And our 21st Harley Davidson giveaway



25 Brooks Around the Nation

Branch news from around the country

30 Kids' Corner

Get your crayons ready, kids

33 Snap That

Staff photography competition

Your first choice for

Mining Industry Flights

- Corporate Charter Flights
- FIFO Flights
- Urgent Air Freight
- 7x King Air Aircraft - up to 9 passengers
- 6x Learjet Jets - up to 7 passengers



1800 AIRWAY (247 929)

ops@brooksaairways.com

brooksaairways.com

BROOKS
AIRWAYS

BROOKS

CONTACT DETAILS

Brooks Hire Service Head Office

30 Coulson Way
Canning Vale WA 6155

Phone: 1300 276 657

Email: sales@brookshire.com.au

www.brookshire.com.au

The Eneabba is a Brooks Hire Service Pty Ltd publication. All photographs and written articles remain the property of Brooks Hire Service Pty Ltd. No reproduction in whole or in part of this publication is allowed without the permission of the Managing Director.

If you would like to make a submission, please email marketing@brookshire.com.au

Digital Distribution 12,884
Printed Copies 5,000



Serino Blaszkiewicz (OBR), Jonniah Blaszkiewicz (OBR), Lenore Brooks (BROOKS OBR MAIA), Jodi Walley (OBR), Fiona Champion (OBR)

On Country We Stand United

Brooks and Olive Branch Resources form Joint Venture

In 2023, Brooks embarked on a Joint Venture (JV) with 100% Aboriginal owned mining service contractor, Olive Branch Resources (OBR). Registered as BROOKS OBR MAIA, the purpose of this Joint Venture is to give back to the Aboriginal community, and focus on the three success pathways for the traditional owners on country, to create a legacy for the next generation.

The three pathways to success are:

- **Awareness** - an important step to building strong relationships, effective communication, and improved engagement.
- **Employment** - a rise in Aboriginal employment through the JV, and more opportunities for Aboriginal apprenticeships.
- **Business Opportunities** - actively seeking out projects that add value to the advancement of Aboriginal communities.

The new JV is 51% Olive Branch Resources owned to ensure it is run, operated, and supported by the traditional owners. OBR will prioritise clients that focus on giving back to the Aboriginal community. The day-to-day operations will be guided and supported by the Brooks team. Brooks will work collaboratively with OBR to provide equipment to their clients.

Olive Branch Resources is a subsidiary of Olive Branch Enterprise (OBE). Founded by Timothy Champion Snr. in 2019, and currently owned and operated by the Champion family, Olive Branch Members and Directors are members to the Marlinyu Ghoorlie Claim Group. Although private, OBE/OBR have the right to work on Marlinyu Ghoorlie Country within the Goldfields.

In 2021, a shift in company direction meant that OBE would now focus more on mining services and related activities. This shift led to successful partnerships and joint ventures being formed with companies such as Brooks Hire, DRD Group, Okane Rehabilitation, and more.

In 2023, it was decided that OBE would remain an entity focused on giving back to the Aboriginal community, and Olive Branch Resources (OBR) would be founded with the intent of specifically operating as a mining service provider.

OBR aims to provide mining services for the highest tier of mining companies while maintaining a vision to continue working with the Aboriginal community.

How The Joint Venture Will Work

With the Aboriginal Engagement Plan already developed, both Olive Branch Resources and Brooks joined forces to ensure we fulfill the three pathways to success - Awareness, Employment, and Business Opportunities.

In this partnership, we envision and foresee:

- Rise in Aboriginal engagement through the JV
- Aboriginal apprentices in all Brooks locations
- Increase in Aboriginal employment in all Brooks locations
- Close to 75% Aboriginal employment through the BROOKS OBR MAIA Joint Venture
- Reputation of OBR will be immensely increased due to the reputation and status Brooks brings to the table
- Reputation of Brooks will increase due to its association with accredited Aboriginal organisation, OBR

How the JV Will Benefit the Aboriginal Community

The Joint Venture strictly focuses on Aboriginal engagement and participation. Brooks' 'Aboriginal Engagement Plan' is a living model for all other commercial entities to follow suit. Aboriginal communities will see success and growth in employment pathways and educational pathways (apprenticeships and internships); not limiting to the corporate world which will be available to them.

Aboriginal communities will also benefit by being a supplier to not only BROOKS OBR MAIA, but also Brooks Hire directly, which will enhance their skills to be self-sufficient in their life and community.

How the JV Will Benefit the Mining & Construction Industry

Aboriginal engagement in the Australian mining industry is a complex and multifaceted topic that involves the interaction between Aboriginal communities, and the mining sector in the region. The Aboriginal people of Australia have a deep connection to their ancestral lands, which often overlap with areas rich in mineral resources.

Increasingly, mining and construction companies are looking to include Aboriginal participation and engagement in their operations to ensure that cultural and social concerns have been addressed. BROOKS OBR MAIA can satisfy and reassure their clients that the supply of machinery will include collaboration with Aboriginal communities to benefit everyone involved.

Olive Branch has set clear and unprecedented goals for their business and Joint Ventures. They are conscious that Aboriginal business needs to overcome stigmas and pre-assumptive reputations that may have been in place many years before. BROOKS OBR MAIA will help achieve those goals.

Clear goals for the JV from an Olive Branch perspective:

- 5 Year Goal - Lease or hire 75+ pieces of machinery
- 3 Year Goal - Increase assets under Olive Branch Enterprise - preferably 10 pieces of machinery
- 5 Year Goal - 50 Apprentices to come through Brooks and BROOKS OBR MAIA
- 3 Year Goal - 15 New employees for Brooks Hire including BROOKS OBR MAIA
- Big Picture Goal - To own and operate a mine site, together with Brooks

"For this to work, there will come a day where I would love to see us all enter one room discussing and fighting for each other; where race, culture, profession or background isn't looked or blinked at." GREAT LATE ELDER, TIMOTHY CHAMPION, FOUNDER OF OLIVE BRANCH ENTERPRISE

BROOKS OBR MAIA has already started working together to achieve their goals. Assets are being sent out to the FMG Cloudbreak site under the agreement. Brooks looks forward to building a successful partnership with OBR to stand united with the traditional owners of our land.



Aunty Noelene Walley out at Bungabin Hill, conducting site clearance.

"Traveller, there are no paths - paths are made by walking."
OLD ABORIGINAL PROVERB



Heavy Metal Magic

Bulk Metal Recyclers turns trash into cash

Reduce, reuse, recycle. Recycling metals offers many environmental and economic benefits, including the conservation of natural resources, energy savings, and the reduction of greenhouse gas emissions. This quarter, we caught up with the team from Bulk Metal Recyclers Pty Ltd. These guys have a management team with over 100 years of combined experience in the scrap metal industry. They're turning scrap metal into money and saving the environment, all at the same time.

How did the company begin and who are the founders?

The current management team at Bulk Metal Recyclers Pty Ltd have worked in the metal recycling industry over several decades. Simon Geaney - General Manager (1978)
John Roman - Director (1981)
Craig Bradley - Business Manager (1989)
The company initially started in the year 2000 as Bulk Metal Traders (Australia). As it grew a bigger transport collection service, with more employees, it needed a larger premises. That's how Bulk Metal Recyclers evolved its base at Forrestdale in 2013 up to the present day.

What is the source of the majority of your scrap metal?

Local scrap metal is sourced through demolition companies, fabrication workshops, landfill sites, and licensed metal collectors. Bulk Metal Recyclers has joint venture supply arrangements with country collection depots located at Geraldton, Kalgoorlie, and Albany. We perform regular clean up trips to regional landfill sites. This involves using a metal baler, with the scrap being fed into it using our new Sany 21t excavator equipped with a grapple and magnet. We operate two sets of pocket road train tippers. These make at least two to three country trips each, per week.

How do you sort and process the bulk metal?

Most scrap from manufacturers is already sorted into its prime category, whether aluminium, copper, or steel. Our role is to check that each item is not contaminated by another. For this, we use magnets to pull steel out from the more valuable non ferrous metals, and of course good old human visual checks. Metals that may possibly contain higher value alloys are tested using a hand held analyser, then stored until a commercial export quantity of 25 tonne is reached. They are then offered out to various suppliers for a bid price.

Can you tell us about the excavator attachments that you use for scrap metal recycling?

Our excavators have three different types of attachments:



Magnet Attachments - these are powered by hydraulic generators that run off the excavator's hydraulic pumps.

Hydraulic Shears - these are similar to a "parrot beak", and are able to cut through 3 inch steel rods.

Finger grapples - also known as five tyne grapples which are attached to the end of the boom and work like a crab claw.

After processing the metal, where does it end up?

Depending on what the metal is, determines how it is shipped and where it goes for melting. For example, general scrap steel is loaded direct into the hull of a bulk carrier and exported to either Vietnam, Indonesia or Bangladesh. Higher value metals are sold in smaller quantities and exported in sea containers to Taiwan, Thailand, Malaysia, India, China, and India.

Are there any government, or industry regulations that you need to abide by?

All metal recycling sites must be approved by local council for use, and must comply with noise, pollution, and traffic management guidelines pertaining to that Shire. Once operating, metal recycling yards are subject to regular site checks from the Fire Brigade, Water Authority, Main Roads, WA Police, and Fairwork Australia. Work orders are issued if something is not to their liking.



What are the biggest challenges that you face in the scrap metal industry, and how do you overcome them?

There are many challenges which the industry faces, daily. Firstly, container shipping is very difficult with erratic vessel schedules which make the timely packing of containers a challenge. Nowadays, the product inside the loaded container must be inspected by an approved International body before being delivered to the wharf.

Secondly, volatile world markets, together with exchange rates, and fuel prices, can impact a sale to the point where it does not become viable and the choices are to sell at a loss to make room, or hold onto product for another favourable cycle which puts pressure on cash flow.

What other services and facilities do Bulk Metal Recyclers offer?

Bulk Metal offers an excellent bin service for larger scrap producers in the metropolitan area and we continue to offer great prices with prompt payment as we have done so for the past 23 years.

Where do you see Bulk Metal Recyclers in 5 years from now? Have you got any plans for the future?

BULK Metal Recyclers is WA's only private bulk scrap exporter that has loaded in excess of 85 vessels. The talked about goal is to reach 100 shipments which would likely coincide with another five years in business, all things being equal. Once that is achieved, the BMR team will review its personal retirement goals, and hopefully work in consulting with the next owner who in turn will load another 100 vessels.

Overall, metal recycling plays a crucial role in sustainable resource management. It contributes to the circular economy by closing the loop on the life cycle of metals and reducing the environmental impact of metal production.

If you have 1,000 kilograms or more of scrap metal, and an ABN, then call Bulk Metal Recyclers on (08) 9399 2100 to convert it into real money in your bank account.



Formula Aviation in 2001

From Ground Zero

A formula for success

For founders of Brooks Airways and Medical Air, planes have played a large part in Doug Brooks' and Shane Gifford's lives.

For Doug, his entrance into the aviation industry began at a young age. Qualifying as a commercial pilot, Doug invested in piston-engine aircraft and warbirds which he used to service clients and offer them joyflights.

For Shane, it was a love of mechanical engineering, which began with motorcycle mechanics, and quickly shifted to aviation when he was introduced to the industry.

Neither have looked back since. At the close of 2023, with a full fleet of aircraft and a team of mechanics, pilots, nurses, and doctors working beside them, we sat down with Shane to reflect on the history of Brooks Airways and Medical Air, and the partnership created through them.

The Early Days

Shane's introduction to the aviation industry came at twenty-two when he was offered the opportunity to try his hand as an Apprentice Aircraft Maintenance Engineer.

From that moment on, Shane's world became planes. His knack for the mechanical trade saw him excel in the company, becoming a licensed Aviation Engineer. In addition to maintaining and rebuilding planes, Shane learnt to fly them, achieving his Private Pilot License.

It's within this world that Shane and Doug met. At the time, Doug had a small collection of planes, including a T-6 Texan Warbird, which Shane would maintain for him.

Having built a strong repertoire of skills, and with a desire to start his own company, in late 2000, Shane purchased Air Phoenix International, trading as Formula Aviation. An aviation engineering maintenance company, Shane flew across Australia, maintaining aircraft for the mining and charter industry.

Operating in the same circle and running his own mining equipment hire company - Brooks Hire Service - Doug caught wind of Shane's purchase and got in touch. "Doug heard what I was up to, tracked me down and asked if I wanted a partner," said Shane.



Shane Gifford (right) with a Formula Aviation client in the early 2000's



Doug Brooks running promotional flights in the early 2000's

Taking the Leap

In 2001, Doug joined the company as a 50% partner. Formula Aviation was purchased with a Baron aircraft already in the fleet, of which Shane had been leasing out to mining companies in the Pilbara region of WA. Together, Shane and Doug decided it was time to expand, purchasing their first B58 Baron together.

"We purchased the first one, and then another after that, and another after that," Shane laughs. The business expanded that way, servicing the Pilbara region for Rio Tinto and AusWest Airlines.

Expanding from Barons to Piper Navajos and Piper Chieftains, there was no looking back for the pair, eventually purchasing a Beech King Air 200 in 2007, which would later become the company's staple charter aircraft.

"There was always lots going on," Shane says. "Having nine aircraft based up in the Pilbara was difficult work. I was always on an aircraft going somewhere to fix something."

By 2010, with the acquisition of AusWest Airlines, Formula Aviation evolved to provide charter flights around the region in addition to leasing aircraft out. Their established relationships within the mining industry saw the company jump from success to success. "We were flying all types of clients," Shane shares. "A lot of the people that we flew around in the early days are now senior managers of some of the biggest mining companies."



Line up at West Angelas mine site circa 2010

Lift Off

As Formula Aviation continued to soar, Shane and Doug made the pivotal decision to branch into medical flight repatriations, establishing Medical Air in 2013.

"It was an idea I had floated for a few years, as I could see a hole in the market with no private air ambulance companies based in WA," Shane says. "In 2013 we were in a good position to make it happen." Specialising in all aspects of domestic and global repatriation and transport, the six Learjet 35A's in the Medical Air fleet are fitted with state-of-the-art medical equipment, allowing ICU level care.

It was only in 2020, with the prevention of international travel, that the two companies saw a setback to their success. "Covid has been our biggest challenge to date. There were aircraft on the ground and pilots, doctors and nurses still employed," says Shane.

It was at this point in time, that Doug's son, Stuart Brooks, recognised the opportunity to bring Formula Aviation under the wing of the Brooks group of companies. Stuart became the Director of the airline, rebranding it to Brooks Airways, and focusing on mining industry flights - both medical and charter.

Together with Medical Air, both companies have thirteen aircraft in their fleet, and another purchase in the works: a Beech 900. "It's similar to the King Air 200, but it's a stretch version," Shane explains. With nineteen seats, it's the progressive step up that the company requires with their ever-increasing demand.

Looking back to the early 2000's, it is clear that Shane and Doug bought into more than just an airline company. Bringing Stuart Brooks into the fold, they have created a partnership that has produced multiple successful ventures, with no sight of stopping.

Brooks Airways 2023



Cable Beach Calling

Brooks rolls into Broome

Broome, also known as 'Rubibi' by the traditional Yawuru people, is located on the northwest coast of the Kimberley region in Western Australia. Being situated on a north-south peninsular means that the small town of approximately 15,000 people is bordered by ocean on both sides. While Broome itself is traditionally a pearling town, the Kimberley sands on which it is located has a long history of mining activity.

In 2014, a scoping study of the land approximately 100kms east of Broome, lead to the announcement of a maiden ore reserve. In 2018, a native title co-existence agreement was signed by native title holders which ensures strong protection of heritage and environment within the agreement, and in January 2021 Sheffield and Yansteel executed binding agreements for the formation of a 50:50 Joint Venture (Kimberley Mineral Sands Pty Ltd or 'KMS') to own and develop the Thunderbird Mineral Sands Project.

Thunderbird is the first significant heavy mineral sand deposit to be discovered in the Canning Basin and is one of the largest and highest-grade mineral sands deposits globally, including those currently in production. The deposit, hosted by highly weathered Broome Sandstone, contains valuable heavy minerals including ilmenite, zircon, leucoxene, rutile and anatase.

Current projections indicate that the project has a mine life of more than 40 years. It has created hundreds of jobs in construction, mining, processing, and transport.



Doug Brooks and Steve Drage in Broome

In 2023, Brooks Hire recognised an opportunity to supply the Broome mining industry with readily available mining equipment. They purchased a property at 2 Clementson Street, Broome, and started transporting new equipment in.

Longtime staff member, and Brooks family member, Steve Drage took on the development of the branch, arranging signage, and managing the fleet.

There is currently over 40 pieces of plant and machinery in Brooks Hire's Broome fleet. These include compressors, dump trucks, excavators, loaders, graders, scissor lifts, skid steers, rollers, and water carts. The fleet is continuing to grow in line with customer requirements. If you're in the Kimberley region and require any sort of mining and construction equipment, make sure to call into the Brooks Hire Broome branch.



Money of Mine

The new voice in mining and finance media

Feathers are being ruffled in the corporate mining sector with the introduction of new mining podcast, Money of Mine. The brainchild of three ex-industry guys, Money of Mine delivers independent perspectives on mining stocks, backed up by critical in-depth analysis. They don't wear suits or sit behind news desks; instead, they deliver authentic, conversational content that is both entertaining and educational. They're not afraid to ask the hard questions, and their cutting-edge content is pushing boundaries. This quarter, we sat down with the 'MoM' team and asked some questions of our own.

Who are the Money of Mine team?

Money of Mine is the prodigy of an ex-underground miner, an ex-investment banker, and an ex-equity research guy. Matty is the bogan mining guy. Trav is the cynical finance guy, and JD is the analytical boffin. We reckon the combination of three very different people creates decent content.

Where did the idea of Money of Mine come from?

Matty had been running the Life of Mine podcast for a number of years, and that led to the idea of Money of Mine. Trav and JD, who'd previously worked together, listened to Matty's underground mining-focused podcast and loved the episodes that delved into the market and mining companies. By about March 2023, we'd all quit our jobs and decided to go all in - turning Money of Mine into a real business.

Money of Mine has gained quick traction on YouTube, Spotify, and Apple Podcast. What makes your show different to traditional business podcasts?

Our key difference is our independence. We share our frank analysis with no thought of pleasing corporates or a boss. This allows us to say what others won't.

You produce cutting edge content on a daily basis. How do you keep sourcing new material?

We've had no shortage of M&A, macro news, discoveries or scandals to chat about. We focus on the Aussie market but don't mind casting the net wide for the news that's making waves, or should be on the radar of our listeners. Every day is a scramble to decipher what announcements really mean and what the next moves could be.

Your show aims to upset the status quo by asking tough questions and remaining cynical. Which episode has been your most controversial to date and why?

We love asking the tough questions because nobody else does, and while being cynical in part comes naturally, it's a needed attribute in our view. A few episodes that have ruffled some feathers include our analysis on Chalice's (CHN) scoping study for their Julimar project, our breakdown of the Patriot Battery Metals (PMT), our quizzing of Spartan's (SPR) Simon Lawson and an interview with Russell Delroy on the industry's biggest challenges. Each raised eyebrows for different reasons, with a common theme of saying what isn't often publicly said and shining a light on details we think need closer inspection.

Are there any 'no go' zones when it comes to your shows?

We are our own bosses, so we only discuss what interests us, which can pull us in various directions. We love pulling in experts to add layers of thought and give our listeners more value. Our only real 'no go' zone is promotional content, which in any case makes us recoil.



Follow their LinkedIn, Twitter, or Instagram account @moneyofminepod

Our Future Mining Exports

WASM Wombats showcase unmatched skills

WA School of Mines (WASM) is Australia's oldest tertiary mining institution. Managed by Curtin University, and operating from campuses in Perth and Kalgoorlie, WASM gives its students a level of industry exposure and practical experience seldom seen elsewhere. Mining disciplines like Mining Engineering, Metallurgical Engineering, Surveying and Geology, as well as online options for Commerce, are all offered at WASM.

The WASM Wombats were formed in 1999, when WASM students from Kalgoorlie formed a mining team to compete at the International Intercollegiate Mining Competition. A competition like no other, the Mining Games sees universities from all over the world including the USA, Europe, Brazil, and Australia, come together to not only compete, but also to build an international network, and learn both the culture and mining techniques of the aforementioned nations. Hosting of the games is shared between various schools in the USA, the UK, and WASM Kalgoorlie.

How did the International Intercollegiate Mining Competition begin?

On the 2nd of May, 1972 an underground fire broke out in the Sunshine Mine, located between Kellogg and Wallace in northern Idaho, USA. At the time, 173 miners were working underground. As carbon monoxide, heat, and smoke spread rapidly throughout the mine an evacuation was called. Only 80 men were able to escape; 91 died of carbon monoxide poisoning while the remaining two men managed to find a safe spot underground, until they were rescued six days later.

In 1978, the International Intercollegiate Mining Competition was started to honor not only those who perished or lost a loved one in the Sunshine Mine disaster, but also those who had lost a loved one in any mining related incident.

What do the games involve?

The competition is centred around the traditional mining techniques that were used in the industry at the time of the Sunshine Disaster. They consist of seven events: Gold Pan, Hand-Steel, Airleg, Mucking, Survey, Swede Saw, and Track Stand.



Gold Pan - with local soils (clay, rocks & sand), utilising gold panning techniques in a water trough. This is a timed event, experienced Wombats can find all five in less than 30 seconds! A lost 'BB' incurs a five minute penalty.

Hand-Steel - Hand-Steel is one of our more dangerous events, where the team is tasked with getting the deepest holes they can in a block of concrete, using steels and a hammer in order to hammer through the concrete. Non-dominant hands are at high risk of being struck; it isn't uncommon for someone to be sitting out of training with their hand in ice.



Airleg - Airleg is a similar event to hand-steel except with the use of a tool called an airleg (or 'Jack-Leg') that allows the contestants to drill horizontally into a concrete wall. The combined depths of the holes created, dictates the winner. This is a favourite amongst competitors, as its gruelling demands leaves a real taste of satisfaction.

Mucking - Mucking is a timed event where a cart is run to and from the starting point. 'Muckers' fill a cart as fast as they can, while two 'screeners' distribute the dirt in the cart. It isn't uncommon to see a person vomit afterwards.

Survey - Survey is carried out with analogue equipment known as 'theodolites'. Given starting coordinates, competitors must survey out a track and calculate a final 'misclose', the lowest error wins. This event is used as the tie-breaker when tallying the results, the lowest misclose of the tying teams will win – it's proven many a heartbreak.

Swede Saw - Swede Saw involves cutting timber sleepers as quickly as possible. Each team member has their allotted section and if they go outside the section, they must start again. The best will consistently achieve approximately 10 seconds per person.

Track Stand - Track stand is the hallmark event. It requires great coordination and a ruthless edge. Teams must prepare, build and teardown a section of railway as quickly as possible. 4 members are on the tools while the 5th coaches. The coach is the eyes and ears of the team. All that can be heard if the coach bellowing instructions, and the sound of tools on railway iron.

In March 2023, the 45th International Intercollegiate Mining Competition was hosted by the WASM Wombats in the heartland of the Australian mining industry, Kalgoorlie-Boulder, Western Australia. Over 200 competitors flew in from all over the USA, UK, and Australia, to compete in the event. The Wombats had four teams in the competition, with the Men's B Team winning the overall Men's Division. This win cements the Wombats' place in history with consistent top 3 placings in the games since they formed in 1999.

Historically, the Wombats' strength has been consistency, always placing on the podium in each event, which is how the overall title is won. Over the last couple of years, they've set the gold standard for Swede Saw, and won the event by a considerable seven seconds in the 2023 event.

When asked about his personal favourite game, Wombats President, Francis Burt, responded, "at the moment, it would have to be hand-steel. While fraught with danger it is a lot of fun, can be readily trained, and we can fine tune it down to the 1%. There's just something about hitting a steel as hard as you can for two minutes without breaking your hand. We are very eager to win it next year in Montana, USA."

Following the Intercollegiate Games in March, the Wombats went on to compete in the 'Export Cup' which was held in October, 2023. The Export Cup is the annual showdown of the West Australian mining teams.

At this years Export Games, the Wombats were able to field the most teams in the clubs history. Six men's teams, and one women's team - their first womens team in four years. Each team consists of five members, with the potential to have a sixth as a reserve.

The competition proved very successful for the Wombats. With UWA's 'Wedgetails', and Bentley's 'WASM Wallabies' in attendance, the Wombats really put on a show, taking out first place in the men's and women's divisions. The titular Wombats Men's B team once again proved their class with a commanding win, gearing up for the pursuit of back-to-back world titles in Montana 2024. The women also did fantastically well. In their first outing as a team, they came away with a tightly contested 1 point win.

So, what's the next event on the Wombat's calendar?

Now that the 'Export Cup' has completed, all eyes are set on the 2024 Intercollegiate Mining Games. to be held by Montana Tech University, in Butte, Montana. The games will run from March 20th – 24th, with over 300 competitors expected from around the globe.

"We are very excited," said Mr Burt. "The 'Flying Wombats' have been announced, with a record 28-strong touring party!"

Until March, the teams will be training as much as possible, partnering with UWA and Curtin Bentley teams, to train at their grounds over the summer break when people are back from work.

As proud sponsors of the WASM Wombats, Brooks Hire wish the teams all the best for the 2024 International Intercollegiate Mining Competition. We are backing our future miners and look forward to welcoming them into our industry.

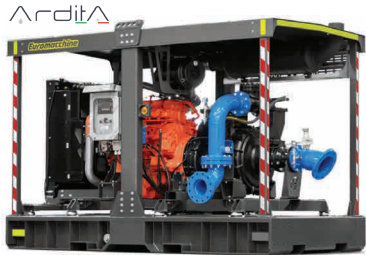
Made in Italia

Italy is renowned for their high quality of manufacturing across a range of different products: machines, tools, pumps, and generators included. In July 2023, Lenore Brooks travelled to Italy to maintain relationships with our quality suppliers.

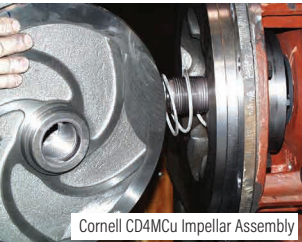
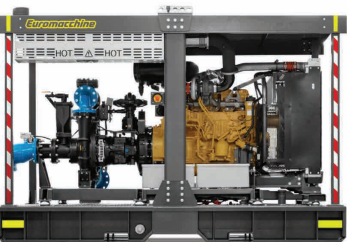
Lenore’s first stop was at the Euromacchine factory. Euromacchine is a well-respected brand that produces high quality pumps for the mining and construction industries. We asked Euromacchine to show us what they have on offer.



Euromacchine ARDITA package for the mining market



Euromacchine introduces the Ardita line of diesel driven pump packages, to cater to the mining market niche where there is a need for robust high head diesel driven pump sets. These units feature the MX solids handling or SM slurry Cornell pump of your choice coupled to a diesel engine, including the advanced ComAp IntelliGen500 control panel, and mounted on a high quality sub-frame. The frames include a bundled diesel fuel tank and can be customised with lifting bales, protection bars, mining sledge etc. should these be required.



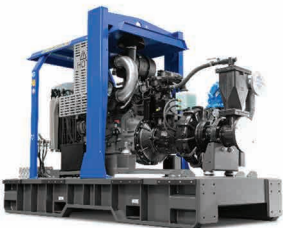
Optional pump wet ends in Duplex stainless steel

Duplex stainless steel design enables the pumps to handle advanced dewatering jobs in environments where pH levels are unpredictable and varying – from very acidic to very alkaline. Furthermore CD4MCu Duplex also allows the pumps to be used in more abrasive applications as it will not “pit” like regular stainless steel. Duplex Stainless Steel is much more resistant to corrosion and much stronger.

CD4MCu is duplex stainless steel that uses a two-phase metallurgy process, different from the single-phase metallurgy process found in common stainless steel grades like 316. This process combines the corrosion resistance of 300-series stainless steel with the strength and hardness of 400-series stainless steel. This results in stainless steel with equivalent or superior corrosion resistance to 316 SS but with twice the yield strength. CD4MCu allows pumps to be used in more abrasive applications with enhanced resistance to corrosive cracking and pitting. Cornell has made CD4MCu castings available for 23 of its most popular pump models, reducing production time to about 1-2 weeks.

Redi-Prime Cornell Pumps

Featuring a capacity of 20 Lit/sec to a maximum of 500 Lit/sec and a head of up to a maximum of 250 mwc (25 bar).



Using high efficiency pumps and state-of-the-art diesel engines, the units offer maximum performance at minimal cost, fully in-sync with Euromacchine and Cornell's philosophy of “Efficiency by Design” for the lowest cost of ownership.

For example, the 200/180 - MX01-S566 specifications are:

Cornell pump model	6822MX
Max. flow	260 Lit/sec max
Max. pressure	200 mwc (656 ft.)
Pump speed	1900 rpm
Casing	Ductile iron
Connections	Discharge 8” / Suction 10”
Impeller type	Closed impeller, CA6Nm stainless steel
Solids handling	50mm
Priming system	Cornell Redi-Prime 50CFM (24 Lit/sec)
Engine	Scania DC16A 086
Engine power	566 kW (770 Hp) @2.000 rpm
Weight (net)	Approx. 4500 kg

Brooks Hire and Brooks Equipment Sales has Euromacchine pumps available for hire and sale. To see the full range, go to brooksequipment.com.au **Euromacchine** PUMPING INNOVATION

GENMAC generates long-lasting energy

Whilst in Italy, Lenore Brooks travelled to the Province of Reggio Emilia to catch up with Caterina Beltrami, Export Manager for Genmac Power Products. Caterina has been helping Brooks bring Genmac products into Australia since 2021. In fact, in 2022, Brooks Equipment was recognised by Genmac as one of their top ten distributors worldwide.

Caterina was in high spirits during Lenore’s visit, as Genmac had recently celebrated their 40th year in business. We asked Caterina about the company’s history, new products, and their future in the construction equipment supply industry.

Genmac has just celebrated 40 years in business. Can you tell us how the company began?

Genmac began as a family company in 1983. Piero Beltrami, our founder, used to work every day, including Sundays, to develop Genmac in the international markets. He used to invite clients to his home for dinner. His wife Giovanna was a master in cooking and her family recipes are famous all over the world. Today Genmac is present all over the world but still keeps the same family atmosphere and passion for the job.

In what way are Genmac products superior to your competitors?

Genmac products simply always work. From deserts in Saudi Arabia, to ice fields in Antarctica. Some Genmac units on field have 46,000 working hours. If it was a car, it would be like having 3.6 million kilometres on the odometre.



Are there any new products that you’d like to tell us about?

Over the past three years, Genmac has renewed their generator range, and we are super proud of the new models from 300 to 1000kVA, for example, the DIAMOND and APOLLO models. Standard features include: six lockable doors on long sides, additional door on radiator and muffler case, integrated robust skid base, and large control panel for easy connection.



With a world focus on green energy, what products can Genmac offer to offset carbon emissions?

Genmac developed a complete range from 5kVA to 500kVA with Stage 5 engine, which is the standard emission requirement by law in Europe for mobile generators (construction, rental, mobile service units etc.). By looking at the diagram below, it is amazing to see how the new generation of diesel engines has reduced the carbon footprint.

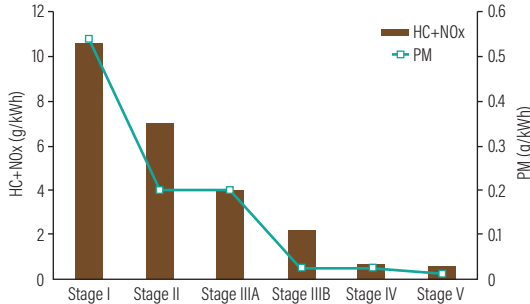


Figure 1. Emission limits from Stage I to Stage V for HC + NOx and PM

Genmac generators and lighting towers can be purchased through Brooks Equipment Sales, or hired through Brooks Hire Service.





Family Business Excellence

Brooks wins Established Family Business Award

Family run businesses account for 70% of all businesses in Australia, and Brooks Hire Service is one of them.

Established in 1979 by Doug Brooks as a dry hire equipment business, today the business has expanded to include divisions in access equipment, cranes, equipment sales, site services, transport, and even an airline company. The business is still proudly run by Doug Brooks at the helm, with his wife Roma alongside him, and their three adult children, Keith, Stuart, and Lenore, in senior management positions.

In 2012, Brooks joined the Family Business Association (FBA). FBA connects a network of family businesses with support, education, advice, networking opportunities and help with family business succession and family business dynamics. As the peak body for family business in Australia and New Zealand, FBA advocates for family businesses on all levels. This includes raising the profile of the family business sector, and being a voice for family businesses at all government levels. They have played an important role in senate inquiries, policy, and tax reviews, regarding family business.



In 2023, the Brooks family threw their hat in the ring, nominating Brooks Hire in the Family Business Excellence Awards. Recognising the achievements of families that are managing respected and successful family businesses, the Family Business Excellence Awards pays homage to the significant contribution they make to the Australian & New Zealand community, society and economy.

This annual awards program acknowledges family businesses at varying stages of maturity and ownership. There are three categories available to enter: Emerging Family Business, Established Family Business, and Legacy Family Business.

Stuart Brooks, Managing Director of the Brooks group of companies nominated Brooks Hire for the Established Family Business Award. The nomination process was quite involved, with a lengthy submission detailing the business' growth, purpose, strategy, milestones, and level of family involvement. Each answer was restricted to 300 words or less which made things quite difficult considering the business has over 40 years of history.

When asked about the core strengths of the business that have made it a success, Stuart was quick to point out that Brooks has four key areas of strength:

Best Service - we provide service that goes above and beyond client expectations. That's how our business was built, and it's how it will continue to grow.

Best Equipment - we regularly update our equipment so that clients have access to the best late model, low hour machines.

Best staff and community engagement - we view our staff as members of our family and engage them in nationwide events. We actively support our community through sponsorships and donations.

Best Practise - we adhere to strict policies and procedures, and are governed by ISO accreditation.



On Thursday, 12th October, Brooks Hire Service was awarded the Established Family Business Award for Western Australia at the the FBA's Excellence Awards Lunch. Passing Paws Pet Cremations were the winners of the Emerging Family Business category, and Academic Group won the Legacy Family Business category.

The winner in each category, in each region/state, goes into the running to complete against the other five finalist to become the overall Winner of the Family Business Excellence Award. This will be announced at The Family Business Conference in May 2024.

Brooks would like to thank the Family Business Association for their support over the years, and for recognising their achievements at the Excellence Awards. Congratulations are extended to all winners and nominees across all states and categories. To find out more, or become a member of FBA, go to www.familybusinessassociation.org

Emerging Family Business Category Winner
Passing Paws Pet Cremations



Legacy Family Business Category Winner
Academic Group





A Day on the Green

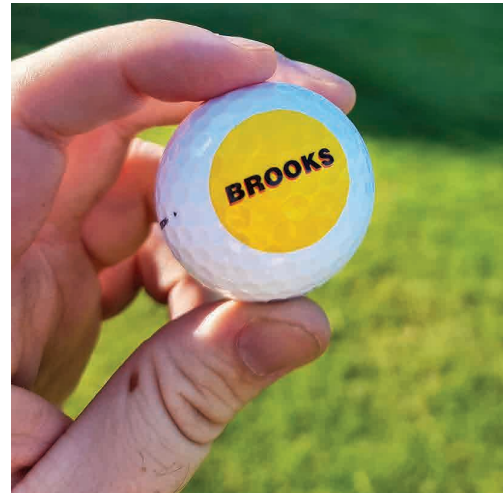
Golfing for MATES in Construction

Men working in the construction industry are 2.38 times more likely to commit suicide than other Australian men. MATES in Construction is a charity that was established in 2008 to reduce the high level of suicide among Australian construction workers.

On Thursday, 30th November, the Civil Contractors Federation of WA (CCF WA) and Brooks, hosted a charity golf day to raise money and awareness for MATES in Construction. Perth turned on its best weather for a sunny 30 degree day at the Joondalup Country Club.

As major sponsors of the event, Brooks supplied the sold out crowd of 216 players with goody bags, golf balls, and sunscreen. There were plenty of Brooks yellow signs on display, along with compactors, rock breakers, and scissor lifts from the Equipment Sales and Access divisions.

Brooks sponsored two teams on the day. Playing on Team 1, was Stuart Brooks, David Welch, and Megan Heffer. Playing on Team 2, was Claire Harrison, Jacinta Pickering, Gary Bushell, and Michael O'Grady. The centre marquee was manned by Joe Goulding from Brooks Equipment Sales, and Priya Naidu, from Brooks Access. Players were treated to massages, cold drinks, and a sausage sizzle on the way around.



Claire Harrison impressed everyone by winning the Long Drive Competition, picking up a bottle of Royal Salute 21 Scotch Whiskey for her efforts.

Congratulations to the winning team from Enviro Infrastructure, who were presented with the perpetual MATES cup. Second place was taken out by Holcim Australia, and third place went to National Pump and Energy, and Westrac Cat. Well done to everyone who scored a prize on the day.

Most importantly though, the event raised much needed funds for MATES in Construction. At the end of the day, CCF WA President, Andy Graham handed over a cheque for \$5,700 to CEO of MATES in Construction WA, Liam Cubbage. The money will be used to provide community development programs on sites, and by supporting workers in need through case management and a 24/7 help line. MATES serve the construction industry in QLD, NT, NSW, SA, and WA, the Energy industry in QLD and NSW, and nationally, the Mining industry.



New Equipment

THE BROOKS FLEET OF ASSETS

BROOKS
HIRE

Exciting news! The largest of our mining equipment has hit Australian shores in the form of two XCMG XE1350 excavators. Weighing in at a massive 121 tonnes, with a 7m³ rock bucket, these are the biggest machines that we've added to the fleet so far. They are available for hire, or sale.



Toyota Hilux Mine Spec Utes



Mine Spec Buses and Minivans



Caterpillar 982 Loader



Sany SY500H Excavator



Komatsu PC490 Excavator



Komatsu HM400 35KL Water Truck

We've got truck loads of new equipment rolling into our yards all over Australia. Here are just a few of our new machines.

BROOKS
EQUIPMENT

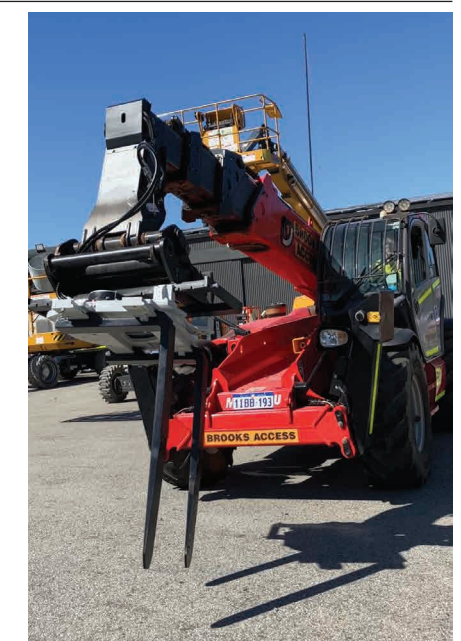


BROOKS
ACCESS

← New in the hire department is this JCB Agri Spec. Telehandler.

We also had a request from a client who required a rotating fork attachment which we attached to this Manitou telehandler. →

On the sales front, we waved goodbye to this Genie GS-1932 Scissorlift recently. ←



Christmas Celebrations

And our 21st Harley Davidson giveaway

Brooks saw 2023 out with a bang, celebrating Christmas across the nation, and the giveaway of our 21st Harley Davidson motorbike. Congratulations to Mundamurra who were the lucky winners.





WA Mining Conference

The WA Mining Conference and Exhibition kicked off at the Perth Exhibition Centre, running across two days, on the 11th & 12th October. The annual event showcases WA's mining sector, with a focus on technical and digital innovation. As always, the event had an impressive turnout. The Brooks group of companies all joined forces to deliver a well-rounded exhibition stand, with information on our green technology, and plenty of merchandise giveaways.

CCF Victoria Earth Awards



Brooks Hire's, Georgia Vallido, flew from Sydney to Melbourne to join Haley Davey in attending the CCF VIC Earth Awards in September, 2023. The Earth Awards showcases the best talent in the construction industry, and celebrates excellence in civil construction. Congratulations to the winners of the 2023 awards, and well done to the CCF VIC team for putting on a fantastic event.



CCF WA Earth Awards

Big hair, sequins, glitter, and sparkle, was on full display at the 70's themed CCF WA Earth Awards, held in October, 2023. Brooks Hire sponsored two awards; Excellence in Civil Construction Project valued up to \$2M, and Excellence in Civil Construction Project valued \$2-5M. Congratulations to Enviro Infrastructure, and Water Corporation who were the winners of these awards respectively. Jacinta Pickering from Brooks Access was on hand to present the awards on the evening. Once again, CCF WA put on an amazing event filled with glamorous entertainment.



ACBC National China Day

As members and Silver Sponsors of the Australia China Business Council (ACBC), the Brooks Hire team were out in full force to celebrate National China Day. Also known as the Mid-Autumn Festival, National China Day is a Chinese public holiday that is celebrated on the 1st October. The event was held at Government House, and was an excellent opportunity to broaden bilateral relationships.



CCF WA Energy Infrastructure



Lenore Brooks attended the CCF WA Energy Infrastructure Breakfast held on 9th November, 2023. The event outlined the transformation of WA's power network as we pursue decarbonisation, and hydrogen's role in the transition to net zero.

IQA Golf Day

Lenore Brooks and Jack Pengilly were delighted to be invited to the Institute of Quarrying Australia (IQA) annual golf day. The team at Komatsu hosted Lenore and Jack as their guests at the event, held in November.



CCF WA Women in Civil Sundowner



CCF NSW People Awards



Our very own, Francisco Lagos scrubbed up nicely for the 'touch of gold' themed CCF NSW People Awards and President's Gala Ball. Held at Rosehill Gardens Racecourse, the People Awards showcase the high calibre of people who work across a variety of civil roles from engineers to safety officers, as well as the women who are making strides in civil.

The Brooks ladies were out in full force at the CCF WA Women in Civil Summer Sundowner, held on 6th December, 2023. Priya Naidu, Megan Heffer, Kirsten Swenson, Stephanie Smith, Katelyn Gibson, Jacinta Pickering, Allyse Knowles, and Karri Nankervis teamed up to attend the event which attracted 150 guests: the largest in CCF WA history.

The Brooks “family” celebrated National Family Business Australia Day with a big morning tea around the country.

Family Business Australia Day



Lime for Lymphoma

September was “Lime it up for Lymphoma” month. Putting lymphoma in the limelight, the Brooks team wore various shades of green to raise awareness and support for the many Australian’s that are diagnosed with lymphoma every year.



Loud Shirt Day

The Brooks team got ‘Loud’ for Loud Shirt Day to raise money for kids with hearing loss, to connect, communicate, and thrive.



Sydney Crew Donate

Mark Barbaro and Timothy Hearn from the Brooks Sydney branch rolled up their high vis sleeves to donate whole blood at their local blood donation centre. One blood donation can save up to three lives, so this donation has saved possibly six lives. Blood donations are in short supply and are desperately needed. Australia needs over 1.7 million donations every year to meet demand: that’s three donations every minute. Well done guys - not all heroes wear capes!



Access Builds Team

With the Access division expanding rapidly and welcoming new staff, General Manager, Claire Harrison instigated a team building activity for the division. Access staff members and their families were invited to Holey Moley indoor golf where they were able to get to know each other over a few rounds of putting.



Winner Winner!

Congratulations to Steve from Raptor Plant Hire. Steve was one of our Super Deal winners. He won a Thorny Devil aircompressor just for hiring from Brooks. Every month, we randomly select a hire job to win a great prize. That’s why you’re better being with Brooks!



On the Road Again

Chief Business Officer, Lenore Brooks, and Business Development Manager, Gary Bushell, took to the road in October to visit our South West branches, and investigate new projects in the region.



Brooks Babes

We love it when our staff members send us photos of their “Brooks Babes”. Sydney Branch Manager, Mark Barbaro had a site visit from little Henry. Access Account Manager, Jacinta Pickering introduced her grandsons, Harry and Theo to Brooks, and Access General Manager, Claire Harrison shared a snap of little Milla with her Brooks toys.



Welcome Aboard

Marcus Smargiassi

What was your first job:
Brooks is my first full time job. I had worked part time at a family friend's mechanic shop.

What is your role at Brooks:
Heavy Diesel Apprentice Mechanic, Bunbury WA.

What did you want to be when you were growing up:
A famous footy player.

What achievement in life are you most proud of: Probably getting my apprenticeship, I had always wanted to work on heavy machinery and learn how things work.

How would you describe yourself in 3 words:
Easy going, fair, simple.

Where would we find you on the weekends: Probably on the driveway spilling oil and making messes while working on my ute.

What is something that you're really bad at:
Not making a mess while working.

If you could invite anybody to dinner (dead or alive), who would it be: Ben Cousins.

Favourite cake: Mudcake.

Favourite song: "Pictures" by Sneaky Sound System.

Favourite holiday destination: Bali for sure.



Oren Portelli

What was your first job:
Woolworths cashier.

What is your role at Brooks:
Light Vehicle to Heavy Duty Mechanic trade upgrade, Karratha WA.

What did you want to be when you were growing up: A secret agent.

What achievement are you most proud of:
Buying a house.

How would you describe yourself in 3 words:
A chill guy.

Jasmin Keegans

What was your first job:
Foot Locker.

What is your role at Brooks:
People & Culture Assistant, Welshpool, WA.

What did you want to be when you were growing up:
Actress.

What achievement in life are you most proud of: Pending.

How would you describe yourself in 3 words:
Loyal, honest, tired.

Where would we find you on the weekends:
At a café somewhere eating.

What is something that you're really good at:
Procrastinating.

What is something that you're really bad at:
I'm really bad at parking in the city.

If you could invite anybody to dinner (dead or alive), who would it be: My Grandma.

Favourite cake: Vanilla Cheesecake.

Favourite song: "Wait for U" by Future, Drake, Tems.

Favourite holiday destination: Dubai.



Jennifer Fife

What was your first job:
Carer at an aged care home.

What is your role at Brooks:
Office Coordinator, Welshpool WA.

What did you want to be when you grew up:
Flight Attendant.

What achievement in life are you most proud of: Getting the job with Emirates.

How would you describe yourself in 3 words:
Kind, adventurous, and spontaneous.

Where would we find you on the weekends: At the beach during summer, and spending time with friends and family.

What is something that you're really good at: Sports.

What is something that you're really bad at: Public speaking.

If you could invite anybody to dinner (dead or alive), who would it be: My Grandad.

Favourite Cake: Carrot cake.

Favourite song: Boys of Summer.

Favourite holiday destination: NYC or LA.



Travis Duncan

What was your first job:
My first real job was helping and cleaning up at building sites.

What is your role at Brooks:
MC Driver, Canning Vale WA

What did you want to be when you grew up:
A Firefighter.

What achievement in life are you most proud of: My greatest achievement in this lifetime is being a dad to my son and daughter. It is my highest calling, one that I take very seriously.

How would you describe yourself in 3 words:
Determined, resourceful, energetic.

Where would we find you on the weekends:
Outdoors or working in my shed on my cars and bikes.

What is something that you're really good at: Fixing stuff that is broken.

What is something that you're really bad at: Trying to wind down of a night time.

If you could invite anybody to dinner (dead or alive), who would it be: My grandparents.

Favourite Cake: Icecream cake.

Favourite holiday destination: Dubai.



Aria Pei



What was your first job:
An Environmental Planner in an urban planning company.

What is your role at Brooks:
Asset Administrator, Welshpool WA.

What did you want to be when you grew up: A journalist / writer.

What achievement in life are you most proud of: Being awarded as Environmental Officer of the year in 2021.

How would you describe yourself in 3 words:
Kind, positive, but tenacious.

Where would we find you on the weekends:
Out hiking around Perth.

What is something that you're really good at:
Writing.

What is something that you're really bad at:
Swimming... glub, glub, glub.

If you could invite anybody to dinner (dead or alive), who would it be: My family members past and present.

Favourite Cake: Cheesecake.

Favourite song: 'Perfect Day' by Lou Reed.

Favourite holiday destination: Rome.

Yan Theng Ooi



What was your first job:
Early childhood tutor.

What is your role at Brooks:
Graduate Accountant, Welshpool WA.

What did you want to be when you grew up: An astronaut.

What achievement in life are you most proud of: Healthy mind and body.

How would you describe yourself in 3 words: Positive, cheerful, and adventurous.

Where would we find you on the weekends:
Definitely home, happy me time!

What is something that you're really good at:
Baking and handicraft.

What is something that you're really bad at:
Brain teasers and math games (sadly completing an accounting degree does not help).

If you could invite anybody to dinner (dead or alive), who would it be: My partner, Wayne Low.

Favourite Cake: Any French cake.

Favourite song: 'Anywhere' by Rita Ora.

Favourite holiday destination: Japan.



Simon's Kitchen

Cajun Beef Ribs WITH Bourbon St Sauce

You don't win friends with salad! Simon, our Bid Coordinator in Welshpool, has given us his secret beef ribs recipe. Get this in your smoker this summer and you'll have the neighbours lining up at the door.



Ingredients:

1-2 Racks of Beef Ribs
Binder (ie. duck fat, oil, yellow mustard)
Spring Onions (optional to garnish)

Cajun Rub

2 tsp Hot Paprika
3 tsp Dried Thyme
2 tsp Granulated Garlic
2 tsp Kosher Salt
2 tsp Black Pepper
1 tsp Cayenne Powder
1 tsp Dried Oregano
3/4 tsp Cumin
1/2 tsp Nutmeg

Bourbon Street Sauce

4 Tbsp Butter
1 Shallot - finely diced
2 Cloves Garlic - finely diced
1/3 cup Brown Sugar
2 Tbsp Seeded Mustard
1/4 cup Soy Sauce
2 tsp Fresh Thyme - finely chopped
1/2 tsp Red Pepper Flakes
1/2 tsp Cayenne Powder



Method:

1. Combine ingredients for Cajun Rub in a small bowl. Coat ribs with your chosen binder. Heavily apply the Cajun Rub to the ribs, then wrap and place in fridge for 3-4 hours. Remove from fridge and bring to room temperature before cooking.
2. Prepare your smoker and bring to a heat of 120-135°C. Add your preferred wood chips or chunks for additional flavour.
3. Add the ribs to the smoker and cook for approximately 3-4 hours, until a nice crust develops on the outside, and the meat has an internal temperature of 68-71°C. Optional - spritz the ribs every 45 minutes with a mixture of beer and vinegar.
4. When the ribs reach 68-71°C, wrap tightly in butcher's paper or foil, then place back on the smoker. Cook for a further 2-3 hours until the internal temperature reaches 93-96°C, remove from heat and allow to rest (still wrapped) for 1-2 hours. Prepare the sauce while meat is resting.
5. To make the sauce, in a small saucepan over a medium heat, melt the butter, then add garlic and shallots. Saute for 2-3 minutes, then add brown sugar and soy sauce. Stir until bubbling. Add bourbon and stir for 1 minute to let the alcohol burn off. Add the remaining ingredients, and once bubbling, stir constantly for 5-6 minutes to reduce, then remove from heat. The sauce will thicken as it cools. Once rested, slice up the ribs and serve with the Bourbon Street Sauce.

***Note:** the above method uses a charcoal smoker however similar results can be achieved on a BBQ or in an oven by adjusting temperature and wrapping the meat at an earlier time to stop it from drying out.

Kids' Corner

Join the Dots & Colour In

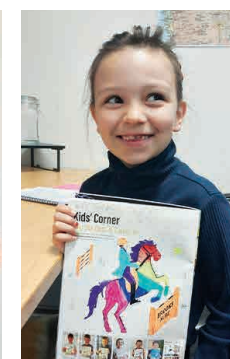
Get Mum or Dad to take a photo of your work and email it to marketing@brookshire.com.au with your name and age for your chance to win a cool prize.



Janelle Luna - Age 7



Thomas Bronleigh - Age 4



Leah Jackson - Age 7



Chloe Low - Age 9



Mia Low - Age 6



Nate Klanjscek - Age 10

Congratulations to all of the winners from our last edition. You will all be receiving a prize in the post.

The Puzzler Page

Spot the Difference

There are 10 differences between the photos below. See if you can find them all.



Word Solver

Find the 9 letter word using the letters in the grid, then try to make as many other words as you can. Words must be a minimum of 4 letters and must contain the middle letter. No proper nouns or plurals.
Good - 15 Words **Very Good** - 20 Words **Excellent** - 25 or more

H	Y	I
N	A	M
C	R	E

_____	_____	_____	_____	_____
_____	_____	_____	_____	_____
_____	_____	_____	_____	_____
_____	_____	_____	_____	_____
_____	_____	_____	_____	_____



Crossword

Across

- 1. Injection
- 5. Bosom buddies
- 9. Ease off
- 14. Fish story
- 15. Café au ____
- 16. Apples and pears
- 17. Second
- 18. Kind of code
- 19. Put in the ground
- 20. Shift noisily
- 23. A real looker
- 24. Go cross-country
- 25. Like some chairs
- 26. Word with music or culture
- 27. Lowdown louse
- 29. Creation made while sitting
- 32. Broadcasting concern
- 35. Waterproofs, in a way
- 36. Natural balm
- 37. Lose power
- 40. Ease the way, in a way?
- 41. Java vessels
- 42. Stand for a sitting
- 43. The queen as a subject?
- 44. One way to sin
- 45. Mr. Whoever-You-Are
- 46. Test standard
- 48. Importune
- 49. Sony rival
- 52. Lose traction
- 56. Sorbonne, e.g.
- 57. Its rings tell time
- 58. In a frenzy
- 59. Less often found
- 60. Peter the Great, e.g.
- 61. Court order?
- 62. Level for a newbie
- 63. They used to be nuts
- 64. Burgoo, e.g.

Down

- 1. Proscenium is a part of it
- 2. Hirsute
- 3. Song released on a 45
- 4. Older child, perhaps
- 5. Emphasize
- 6. Brother of Miriam
- 7. In ____ of
- 8. Dwarf or giant?
- 9. Attorney's ploy
- 10. Ropes with weights attached
- 11. Belladonna lily
- 12. Bo Derek and all wives, e.g.
- 13. Best ending?
- 21. Dentist's occupational hazard
- 22. Silly ones
- 26. Heaping helping
- 27. Favorite hangout
- 28. Goofs up
- 30. Top-drawer
- 31. Steed companion
- 32. Snakes in hieroglyphics
- 33. It has six sides
- 34. Small, decorative writing desk
- 35. Musical Amos
- 36. Gelling agent
- 38. "Delicious!"
- 39. Paddock sound
- 44. Curmudgeonly
- 45. Singer fans and users
- 47. Fuel deliverer
- 48. Shout from those huddled together
- 49. Put the check in the mail
- 52. Check for viruses
- 53. Bart's bus driver
- 54. Major or Minor constellation
- 55. Piercing places
- 56. Before, once

1	2	3	4		5	6	7	8		9	10	11	12	13
14					15					16				
17					18					19				
20				21					22					
23				24					25					
			26				27	28				29	30	31
32	33	34				35				36				
37					38					39				
40					41					42				
43				44					45					
		46	47					48				49	50	51
	52					53	54				55			
56						57					58			
59						60					61			
62						63					64			

Sudoku

Enter numbers into the blank spaces so that each row, column and 3x3 box contains the numbers 1 to 9 without repeats.

	4						6	
	6		3		2		8	
7		5				2		3
		7		5		6		
	1		7		4		5	
		9		1		4		
3		8				1		4
	2		8		3		9	
	9						7	



Brain Teasers

Pronounced as 1 letter, And written with 3, 2 letters there are, and 2 only in me. I'm double, I'm single, I'm black blue, and gray, I'm read from both ends, and the same either way. What am I?

What can you put in a bucket to make it weigh less?



What English word does the following: the first two letters signify a male, the first three letters signify a female, the first four letters signify a great person, while the entire word signifies a great woman. What is the word?

Imagine that you are in a boat, in the middle of the sea. Suddenly, you are surrounded by hungry sharks, just waiting to feed on you. How can you put an end to this?



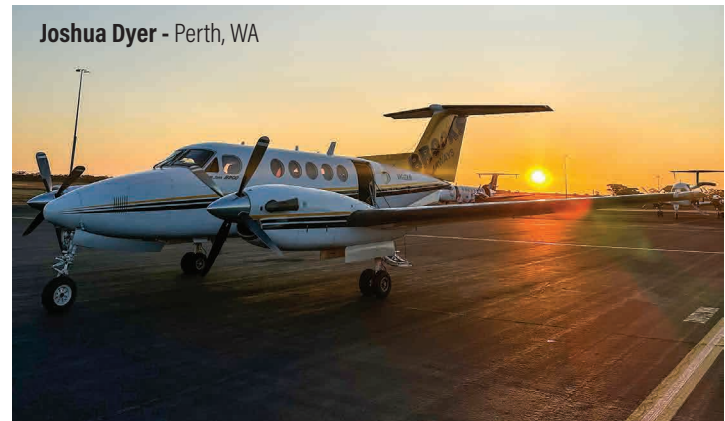
WINNER
Robert Cirocco - Port Augusta SA



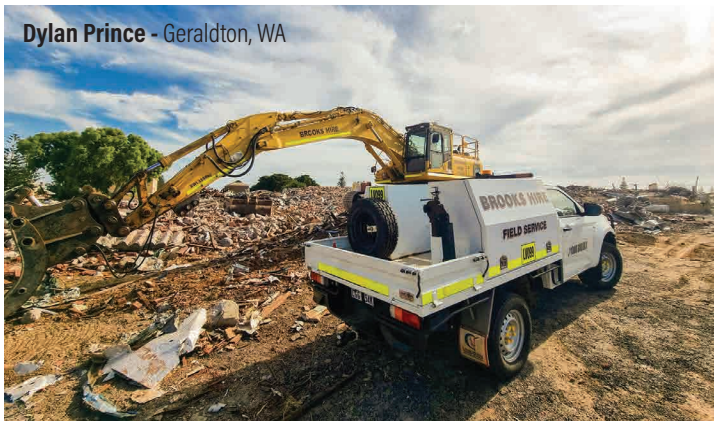
Daniel Mitchell - Perth, WA



Mark Barbaro - Sydney, NSW



Joshua Dyer - Perth, WA



Dylan Prince - Geraldton, WA



Michael Alarcon - Sydney, NSW



Connor Sayers - Brisbane, QLD

Snap That

STAFF PHOTOGRAPHY COMPETITION



Jacinta Pickering - Perth, WA



Gary Bushell Perth, WA



Shane Svenson - Perth, WA



Lance Avey - Perth, WA

Equipment Hire List



Front End Loaders

CATEGORY	MAKE	MODEL	ENGINE	WEIGHT
1.5m³	Komatsu	WA150	74 kW 99 HP @ 2000 rpm	7.5 Tonne
2.1m³	Caterpillar	930K	110 kW @ 1600 rpm	13 Tonne
2.5m³	Komatsu	WA250	124 kW 166 HP @ 2000 rpm	14 Tonne
3.1m³	Komatsu	WA320	124 kW 166 HP @ 2000 rpm	14 Tonne
3.5m³	Komatsu	WA380	140 kW 187 HP @ 2000 rpm	16 Tonne
3.75m³ - 4m³	Komatsu	WA430	173 kW / 232 HP @ 2.100 rpm	18 Tonne
3.4m³	Caterpillar	950M	187 kW 250 HP	20 Tonne
3.6m³	Caterpillar	962M	185 kW 248 HP	20 Tonne
4m³ - 5m³	Komatsu	WA470	204 kW / 274 HP @ 2.000 rpm	23 Tonne
5m³	Komatsu	WA480	223 kW / 299 HP	25 Tonne
4m³ - 5m³	Volvo	L150G	210 kW / 1400 rpm	25 Tonne
4.7m³ - 6.4m³	Komatsu	WA500	266 kW / 357 HP @ 1900 rpm	32 Tonne
5.6m³	Caterpillar	980M	278 kW	30 Tonne
5.6m³	Caterpillar	982M	278 kW @ 1800 rpm	35 Tonne
5.6m³	Hitachi	ZW370	289kW @ 1800 rpm	35 Tonne
6.4m³	Caterpillar	988K	403 kW	51 Tonne
6.4m³	Komatsu	WA600	395 kW / 529 HP @ 1800 rpm	55 Tonne
7m³	Volvo	L260H	309 kW / 420 HP	34 Tonne
13m³	Komatsu	WA900	638 kW / 856 HP	107 Tonne



Tool Carriers

CATEGORY	MAKE	MODEL	ENGINE	WEIGHT
2.2m³ - 2.3m³	Komatsu	WA250PT	104 kW 140 HP / 2000 rpm	10 Tonne
2.2m³ - 2.3m³	Komatsu	WA250PZ	103 kW 138 HP @ 2000 rpm	12 Tonne
1.9m³ - 2.7m³	Komatsu	WA270	111 kW 149 HP @ 2000 rpm	13 Tonne
2.5m³ - 2.7m³	Komatsu	WA320-8	123 kW/165 HP @ 2100 rpm	15 Tonne
2.5m³ - 2.7m³	Komatsu	WA320PZ-6	125 kW / 167 HP	15 Tonne
2.5m³ - 2.7m³	Volvo	L90F	129 kW @ 1700 rpm	16 Tonne
3m³	Volvo	L110F	170 kW @ 1700 rpm	19 Tonne
3.1m3	Hitachi	ZW180-5	126 kW @ 1500 rpm	14.5 Tonne
3.5m³	Volvo	L120F	180 kW @ 1700 rpm	20 Tonne
4.2m³	Volvo	L150F	209 kW @ 1400 rpm	23 Tonne
4.4m³	Volvo	L180F	234 kW @ 1400 rpm	26.6 Tonne
5.2m³	Volvo	L220H	279 kW 379 HP @ 1400 rpm	32.8 Tonne



Excavators

CATEGORY	MAKE	MODEL	ENGINE	BUCKET CAPACITY
1.5 Tonne	Komatsu	PC14R	11,6 kW / 15,6 HP @ 2.600 rpm	0.03m³
1.75 Tonne	Sany	SY16C	14.6 kW @ 2400 rpm	0.04m³
1.8 Tonne	Caterpillar	301.8	16.1kW / 19.2 HP @ 2,400 rpm	0.033m³
1.85 Tonne	Sany	SY18C	14.6 kW @ 2400 rpm	0.04m³
2.26 Tonne	Caterpillar	302	15.7kW / 21 HP @ 2,400 rpm	0.054m³
2.76 Tonne	Sany	SY26U	14.6 kW @ 2400 rpm	0.06m³
3 Tonne	Komatsu	PC30MR	22,0 kW / 29,5 HP @ 2.400 rpm	0.09m³
3 Tonne	Hitachi	ZX33	21.2 kW (28.4 HP)	0.09m³
3.85 Tonne	Sany	SY35U	18.2 kW @ 2400 rmp	0.12m³
5 Tonne	Komatsu	PC55MR	29.1 kW 39 HP/2400 rpm	0.15m³
5 Tonne	Komatsu	PC45MR	29.1 kW 39 HP/2400 rpm	0.15m³
5 Tonne	Komatsu	PC40MR	29.4 kW 39.4 HP/2350 rpm	0.15m³
5.3 Tonne	Sany	SY50U	29.1 kW @ 2400 rpm	0.15m³
6.1 Tonne	Sany	SY60C	42.4 kW / 56.9 HP	0.21m³
7.28 Tonne	Sany	SY75C	43 kW / 57.7 HP	0.28m³
8 Tonne	Komatsu	PC78MR	40,5 kW / 54 HP @ 1.850 rpm	0.28m³
8.5 Tonne	Komatsu	PC88MR	50.7 kW 68 HP @ 1950 rpm	0.34m³
8.8 Tonne	Sany	SY80U	53.7 kW @ 2100 rpm	0.28m³
9 Tonne	Caterpillar	308CR	52.4kW / 70.3 HP @ 2,200 rpm	0.23m³
9.1 Tonne	Sany	SY95C	53.7 kw / 72 HP	0.4m³
14 Tonne	Komatsu	PC138US	72.1 kW / 96.6 HP @ 2200 rpm	0.53m³
14 Tonne	Komatsu	PC160LC	90 kW / 121 HP @ 2200 rpm	0.6m³
14 Tonne	Hyundai	R140LC	84 kW / 113 HP @ 2,100 rpm	0.6m³
15.1 Tonne	Sany	SY135C	78.5 kW @ 2000 rpm	0.6m³
16 Tonne	Sany	SY155U	78.5 kw @ 1900 rpm	0.06m³
16 Tonne	Hitachi	ZX160LC	90.2 kW / 122 HP @ 2,200 rpm	0.73m³
22 Tonne Zero Swing	Komatsu	PC228US	116 kW 155 HP @ 2000 rpm	1.0m³
22 Tonne	Caterpillar	320GC	107 kW (143 hp)	1.0m³
22 Tonne	Caterpillar	320DL	103 kW / 140 HP @ 1800 rpm	1.3m³
22 Tonne	Hitachi	ZX210H	122 kW (164 HP)	1.00m³
22 Tonne	Komatsu	PC200LC	110 kW 147 HP / 2000 rpm	1.2m³
22 Tonne	Komatsu	PC210LCi	118 kW / 158 HP @ 2000 rpm	0.97m³
22 Tonne	Komatsu	PC210LC	116 kW / 156 HP @ 2000 rpm	1.68m³
22 Tonne	Komatsu	HB215LC	110 kW / 148 HP @ 2000 rpm	1.36m³
22.6 Tonne	Sany	SY215C	122 kw @ 2300 rpm	0.93m³
23 Tonne	Komatsu	PC220LC	110 kW 147 HP / 2000 rpm	1.26m³
23 Tonne	Hitachi	ZX225USLC	159 hp (118 kW) @ 2,000 rpm	1.09m³
30 Tonne	Volvo	EC290CLC	153 kW (205 hp)	1.2m³
30 Tonne	Komatsu	PC270LC	149 kW 200 HP / 2050 rpm	1.25m³
31.5 Tonne	Sany	SY305H	212 kW @ 2000rpm	1.7m³
33 Tonne	Hitachi	ZX330	247 HP (180 kW)	1.4m³
33 Tonne	Hitachi	ZX350H	184 kW (246 HP)	2.00m³
34 Tonne	Komatsu	PC300LC	194 kW 260 HP / 1950 rpm	1.8m³
35 Tonne	Hitachi	ZX350LC	202 kW / 271 HP	2.1m³
36 Tonne	Komatsu	PC360LCi	192 kW / 257 HP @ 1950 rpm	1.96m³
36 Tonne	Komatsu	PC350LC	194 kW / 260 HP @ 1950 rpm	2.66m³
36.7 Tonne	Sany	SY365H	205 kW / 275 HP	1.5m³
37 Tonne	Caterpillar	336	232 kW	2.27m³
45 Tonne	Komatsu	PC450LC	270 kW / 362 HP @ 1900 rpm	2.8m³
54.5 Tonne	Sany	SY500H	298 kW / 399.6 HP	2.2m³
60 Tonne	Komatsu	PC600LC	288 kW 386 HP @ 1800 rpm	3.81m³
76.2 Tonne	Sany	SY750H	377 kW @ 1800 rpm	4.2m3
78.6 Tonne	Sany	SY870H	377 kW @ 1800 rpm	5.0m³
80 Tonne	Komatsu	PC850-8EOSE	370 kW 496 HP / 1800 rpm	4.3m³
85 Tonne	Komatsu	PC800LC	363 kW 487 HP @ 1800 rpm	4.5m³
121 Tonne	XCMG	XE1350	567 kW @ 1800 rpm	7m³



Rollers

CATEGORY	WEIGHT	MAKE	MODEL
Smooth Drum	7 Tonne	Bomag	BW177DH
Smooth Drum	11 Tonne	Dynapac	CA252D
Smooth Drum	11 Tonne	Bomag	BW212D
Smooth Drum	12 Tonne	Hamm	3412 HT VIO
Smooth Drum	12 Tonne	Caterpillar	CS64B
Smooth Drum	12 Tonne	Bomag	BW213D
Smooth Drum	12.5 Tonne	Caterpillar	CS56B
Smooth Drum	12.7 Tonne	Dynapac	CA302D
Smooth Drum	13.2 Tonne	Dynapac	CA362D
Smooth Drum	12.6 Tonne	Bomag	BW213D
Smooth Drum	14.3 Tonne	Caterpillar	CS68B
Smooth Drum	15.7 Tonne	Hamm	3516
Smooth Drum	16 Tonne	Caterpillar	CS74B
Smooth Drum	16 Tonne	Caterpillar	CP76B
Smooth Drum	16.1 Tonne	Bomag	BW216D
Smooth Drum	17.89 Tonne	Hamm	3518
Smooth Drum	18.7 Tonne	Caterpillar	CS78B
Smooth Drum	19.3 Tonne	Dynapac	CA6000D
Smooth Drum	19.8 Tonne	Hamm	3520
Smooth Drum	20 Tonne	Caterpillar	CS79B
Smooth Drum	26 Tonne	XCMG	XS263J
Padfoot	12 Tonne	Caterpillar	CS12 GC
Padfoot	12 Tonne	Caterpillar	CS56B
Padfoot	12 Tonne	Bomag	BW211D
Padfoot	12.6 Tonne	Bomag	BW213D
Padfoot	13.2 Tonne	Dynapac	CA362D
Padfoot	15.7 Tonne	Hamm	3516P
Padfoot	16.1 Tonne	Bomag	BW216PD
Padfoot	17.6 Tonne	Caterpillar	CP76B
Padfoot	17.89 Tonne	Hamm	3518P
Padfoot	18 Tonne	Dynapac	CA6000PD
Padfoot	18.6 Tonne	Dynapac	CA602PD
Padfoot	19.4 Tonne	Bomag	BW219PD
Padfoot	19.8 Tonne	Hamm	3520P
Padfoot	26 Tonne	XCMG	XS263
Multi Tyre	18 Tonne	Hamm	HP280
Multi Tyre	18 Tonne	Caterpillar	CW34
Multi Tyre	18.3 Tonne	Hamm	GRW280
Multi Tyre	20 Tonne	Caterpillar	CW34
Multi Tyre	20 Tonne	Ammann	AP240
Multi Tyre	20 Tonne	Bomag	BW24RH

CATEGORY	WEIGHT	MAKE	MODEL
Multi Tyre	20 Tonne	Bomag	BW25RH
Multi Tyre	24 Tonne	Caterpillar	CW34LRC
Double Drum	765 Kg	Husqvarna	LP 6505
Double Drum	1 Tonne	Husqvarna	LP 7505
Double Drum	2.5 Tonne	Caterpillar	CB2.7
Double Drum	2.6 Tonne	Hamm	HD12VV
Double Drum	2.8 Tonne	Bomag	BW120AD
3 Pin Static	14 Tonne	Aveling Barford	DC014
Trench Roller	1,340 Kg	Ammann	1575
Trench Roller	1,495 Kg	Wacker Neuson	RTX-SC3
Trench Roller	1,595 Kg	Dynapac	D.ONE 850
Trench Roller	1,675 Kg	Husqvarna	LP9505



Compactors & Tampers

CATEGORY	WEIGHT	MAKE	MODEL
Tampers	98kg	Husqvarna	LT800
Plate Compactors	185kg	Husqvarna	LG164
Plate Compactors	244kg	Husqvarna	LG204
Plate Compactors	302kg	Husqvarna	LG300
Plate Compactors	436kg	Husqvarna	LG400
Plate Compactors	500kg	Bomag	BPR 70/70D
Plate Compactors	500kg	Dynapac	LG500
Plate Compactors	750kg	Bomag	BPR 100/80
Plate Compactors	750kg	Dynapac	LH700
Plate Compactors	800kg	Husqvarna	LH804



Compressors

TYPE	AIR FLOW	DRY WEIGHT	PRESSURE
Trailer	127 cfm	700 kg	7 bar
Trailer	176.5 cfm	800 kg	7 bar
Skid	185 cfm	950 kg	7 bar
Trailer	251 cfm	1400 kg	7 bar
Skid	400 cfm	1920 kg	10 bar
Trailer	423 cfm	2000 kg	7 bar
Trailer	530 cfm	2600 kg	10 bar
Trailer	893 cfm	3700 kg	8 bar
Trailer	938 cfm	5300 kg	12 bar
Trailer	1020 cfm	5300 kg	10.3 bar
Trailer	1102 cfm	5300 kg	8.6 bar



Graders

CATEGORY	MAKE	MODEL	WEIGHT
12' Motor Grader	Caterpillar	120M	14.5 Tonne
12' Motor Grader	Komatsu	GD555	8 Tonne
14' Motor Grader	Caterpillar	140M	18.4 Tonne
14' Motor Grader	Caterpillar	140M AWD	18.4 Tonne
14' Motor Grader	Caterpillar	140H	18.4 Tonne
14' Motor Grader	Caterpillar	140G	18.4 Tonne
14' Motor Grader	Caterpillar	150 AWD	19.8 Tonne
14' Motor Grader	Komatsu	GD655	18.5 Tonne
14' Motor Grader	John Deere	770G	19.3 Tonne
14' Motor Grader	John Deere	672G	20 Tonne
14' Motor Grader	John Deere	772GP	20.5 Tonne
16' Motor Grader	John Deere	872GP	21.6 Tonne
16' Motor Grader	Caterpillar	16MQLR	30 Tonne
24' Motor Grader	Caterpillar	24	73 Tonne



Dozers

CATEGORY	MAKE	MODEL	BLADE WIDTH
17.3 Tonne	Caterpillar	D6N	4080mm
17.7 Tonne	Caterpillar	D6H	4486mm
21 Tonne	Caterpillar	D6T XL	3693mm
21 Tonne	Caterpillar	D6T LGP	3693mm
27 Tonne	Caterpillar	D7	3988mm
39.4 Tonne	Caterpillar	D8	5045mm
70 Tonne	Caterpillar	D10T	7416mm



Dump Trucks

CATEGORY	PAYLOAD	MAKE	MODEL
Articulated	30 Tonne	Komatsu	HM300
Articulated	37 Tonne	Hitachi	AH400D
Articulated	40 Tonne	Komatsu	HM400
Articulated	41 Tonne	Caterpillar	745



Site Dumpers

CATEGORY	PAYLOAD	MAKE	MODEL
Side Tipper	9 Tonne	Wacker Neuson	DV90
Front Tipper	9 Tonne	Thwaites	9T Dumper



Water Trucks

CATEGORY	CAPACITY	MAKE	MODEL
Rigid	14,000 L	Isuzu	FVZ 260-300
Rigid	14,000 L	Hino	500
Rigid	15,000 L	Isuzu	FVZ 260-300
Rigid	15,000 L	Hino	500
Rigid	15,000 L	Mercedes Benz	Axor
Rigid	20,000 L	Isuzu	FYH 2000 8x4
Rigid	20,000 L	Iveco	Trakker AD450 6x6
Articulated	16,000 L	JCB	Fastrac 185/65
Articulated	16,000 L	Chamberlain	C6100
Articulated	16,000 L	Mercedes Benz	MB Trac
Articulated	26,000 L	Komatsu	HM300
Articulated	35,000 L	Komatsu	HM400



Service, Fuel & Tipper Trucks

CATEGORY	CAPACITY	MAKE	MODEL
Service Truck	8 Compartments	Isuzu	FVZ 260 - 300
Service Truck	8 Compartments	Hino	500
Fuel Trailer	1,400 L	-	-
Fuel Trailer	2,000 L	-	-
Fuel Truck	14,000 L	Hino	500
Tipper Truck	11m³	Isuzu	FVZ 260-300
Tipper Truck	11m³	Hino	500
Tipper Truck	11m³	Isuzu	FVZ 1400
Side Tipper	21m³	Howard Porter	-
Side Tipper	24m3	Road West	-



Backhoes

DIG DEPTH	MAKE	MODEL	WEIGHT
4.32m	JCB	4CX	8.178 Tonne
4.8m	Komatsu	WB97R-5E0	7.6 Tonne
4.883m	Caterpillar	432E	9.1 Tonne
6.14m	JCB	5CX	10.6 Tonne



Skid Steer Loaders

CATEGORY	MAKE	MODEL	TIPPING LOAD (35%)
Tracked	Bobcat	T140SJC	635kg
Tracked	Caterpillar	239D	695kg
Tracked	Caterpillar	249D	790kg
Tracked	Caterpillar	259D	915 kg
Wheeled	Komatsu	SK714	650kg
Wheeled	Caterpillar	226B	680kg
Wheeled	Caterpillar	246C	975kg



Telehandlers

LIFTING WEIGHT	MAKE	MODEL	LIFTING HEIGHT
3 Tonne	JCB	531-70	7000mm
3.2 Tonne	Manitou	MT732	6900mm
3.5 Tonne	JCB	535-95	9500mm
4 Tonne	JCB	541-70	7000mm
4 Tonne	Merlo	TF42.7-100	9500mm
4 Tonne	Manitou	MT-X 1440	13530mm
4 Tonne	Manitou	MT-X 1840	17550mm
6 Tonne	Merlo	P60.10EE	9550mm



Forklifts

LIFTING HEIGHT	MAKE	MODEL	LOAD CAPACITY
3000 mm	Hyster	H4.0FT	4 Tonne
4000 mm	Hyster	H5.0FT	5 Tonne
5336 mm	Hyster	H8.00XM	8 Tonne
6200 mm	Hyster	H16.00XM	16 Tonne



Cranes

MAKE	MODEL	WEIGHT	MAXIMUM BOOM LENGTH
Franna	AT22	22 tonnes	17.9m
Franna	MAC 25	25 tonnes	18.4m



Articulated Boom Lifts

HEIGHT	MAKE	MODEL	CATEGORY
34 ft	JLG	H340AJ	Hybrid
34 ft	Genie	Z34 / 22 N	Electric
45 ft	JLG	450AJ	Diesel
45 ft	Genie	Z-45 XC	Rough Terrain
51 ft	Genie	Z-51 / 30J RT	Rough Terrain
62 ft	Genie	Z-62 / 40	Rough Terrain
80 ft	JLG	H800AJ	Hybrid
80 ft	JLG	800 AJ	Diesel
80 ft	Haulotte	HA26 RTJ PRO	Diesel
80 ft	Genie	Z-80 / 60	Rough Terrain
125 ft	JLG	1250AJP	Diesel
135 ft	Genie	ZX-135 / 70	Rough Terrain



Scissor Lifts

HEIGHT	MAKE	MODEL	CATEGORY
19 ft	JLG	ES1932	Electric
19 ft	JLG	R1932	Electric
26 ft	JLG	R2632	Electric
26 ft	Genie	GS-2632	Electric
26 ft	Genie	GS2669 RT	Rough Terrain
32 ft	JLG	ES 3246	Electric
32 ft	JLG	R 3246	Electric
33 ft	Genie	GS 3369 RT	Rough Terrain
33 ft	Genie	GS 3384	Rough Terrain
33 ft	Snorkel	S3370 RT	Rough Terrain
40 ft	JLG	R 4045	Electric
40 ft	Genie	GS-4069 RT	Rough Terrain
43 ft	Genie	GS-4390	Rough Terrain
46 ft	Genie	GS-4655	Electric
47 ft	JLG	ERT 4769	Rough Terrain
53 ft	Genie	GS-5390	Rough Terrain



Telescopic Boom Lifts

HEIGHT	MAKE	MODEL	CATEGORY
45 ft	Genie	S-45 XC	Rough Terrain
65 ft	Genie	S65 XC	Rough Terrain
80 ft	Genie	S-80 XC	Rough Terrain
85 ft	Genie	S-85XC	Rough Terrain
125 ft	Genie	SX-125 XC	Rough Terrain
135 ft	Genie	SX-135 XC	Rough Terrain
150 ft	Genie	SX-150	Rough Terrain



Generators (Diesel and Hybrid)

POWER	OUTPUT	VOLTAGE	WEIGHT
5 kVA	5.5 kW	230V	95 kg
6 kVA	5.2 kW	240V	239 kg
10 kVA	8 kW	240V	391 kg
15 kVA	12.5 kW	240/415V	516 kg
20 kVA	16 kW	240/415V	703 kg
25 kVA	20 kW	240/415V	591 kg
30 kVA	24 kW	240/415V	950 kg
35 kVA	32 kW	240/415V	890 kg
40 kVA	35 kW	240/415V	900 kg
45 kVA	36 kW	240/415V	1085 kg
60 kVA	48 kW	240/415V	1110 kg
80 kVA	64 kW	240/415V	1403 kg
100 kVA	80 kW	240/415V	1685 kg
150 kVA	120 kW	240/415V	2000 kg
200 kVA	160 kW	240/415V	2440 kg
220 kVA	178 kW	240/415V	3670 kg
250 kVA	200 kW	240/415V	24500 kg
300 kVA	240 kW	240/415V	3068 kg
350 kVA	280 kW	240/415V	4439 kg
400 kVA	320 kW	240/415V	4400 kg
450 kVA	360 kW	240/415V	4597 kg
500 kVA	400 kW	240/415V	4800 kg
600 kVA	480 kW	240/415V	5970 kg
670 kVA	536 kW	240/415V	5970 kg
750 kVA	600 kW	240/415V	9200 kg
800 kVA	640 kW	240/415V	10000 kg
910 kVA	728 kW	240/415V	11600 kg
1035 kVA	828 kW	240/415V	11680 kg
1253 kVA	1002 kW	240/415V	14100 kg
1505 kVA	1204 kW	240/415V	14050 kg
1705 kVA	1364 kW	240/415V	15500 kg
2000 kVA	1600 kW	240/415V	16000 kg

*All Generators under 100 kVA are available on trailers.



Diesel Pumps Highhead

INLET SIZE	OUTLET SIZE	Q MAX	MAX HEAD
100 mm	75 mm	40 L/sec	200 m
100 mm	80 mm	42 L/sec	92 m
150 mm	75 mm	50 L/sec	150 m
150mm	100 mm	80 L/sec	180 m
150 mm	100 mm	117 L/sec	101 m
200 mm	150 mm	167 L/sec	101 m
250 mm	200 mm	250 L/sec	70 m
250 mm	200 mm	408 L/sec	109 m



Diesel Pumps Surface Dewatering

SIZE	Q MAX	MAX HEAD
80 mm	45 L/sec	19 m open and silent option
100 mm	69 L/sec	36 m open and silent option
100 mm	77 L/sec	50 m open and silent option
150 mm	150 L/sec	37 m open and silent option
150 mm	141 L/sec	51 m open and silent option
All Pumps under 150 mm size are available on trailers		
200 mm	175 L/sec	30 m open and silent option
200 mm	236 L/sec	50 m open and silent option
300 mm	313 L/sec	29.5 m open and silent option
300 mm	600 L/sec	71 m open and silent option



Submersible Pumps

TYPE POWER	SIZE	Q MAX	MAX HEAD
Dewatering 1 kW	50 mm	10 L/sec	16 m
Dewatering 2 kW	75 mm	14 L/sec	24 m
Dewatering 3.4 kW	75 mm	23 L/sec	23 m
Dewatering 6.6 kW	75 mm	20 L/sec	38 m
Dewatering 8.8 kW	75 mm	28 L/sec	40 m
Dewatering 6.6 kW	100 mm	37 L/sec	25 m
Dewatering 8.8 kW	100 mm	45 L/sec	30 m
Dewatering 14 kW	100 mm	20 L/sec	65 m
Dewatering 22 kW	100 mm	40 L/sec	65 m
Dewatering 30 kW	100 mm	40 L/sec	86 m
Dewatering 22 kW	150 mm	95 L/sec	40 m
Sludge 3.7 kW	75 mm	20 L/sec	13 m
Sludge 9 kW	100 mm	28 L/sec	23 m
Sludge 11 kW	100 mm	42 L/sec	24 m
Sludge 15 kW	100 mm	22 L/sec	27 m
Sludge 37 kW	100 mm	80 L/sec	50 m
Sludge 45 kW	150 mm	124 L/sec	30 m
Sludge 75 kW	150 mm	155 L/sec	48 m
Slurry 3.1 kW	75 mm	15 L/sec	15 m
Slurry 5.7 kW	100 mm	25 L/sec	23 m
Slurry 8 kW	100 mm	28 L/sec	25 m



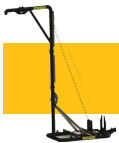
Battery Packs

FEATURES	METRICS
Nominated rated power	36 / 45 kW / kVA
Nominal Energy Storage Capacity	46 kWh
Rated Voltage (VAC)	400 / 230
Battery system voltage (VDC)	48
Nominal Rated Current (A)	65



Compressors

TYPE	AIR FLOW	DRY WEIGHT	PRESSURE
Trailer	127 cfm	700 kg	7 bar
Trailer	176.5 cfm	800 kg	7 bar
Skid	185 cfm	950 kg	7 bar
Trailer	251 cfm	1400	7 bar
Skid	400 cfm	1920 kg	10 bar
Trailer	423 cfm	2000 kg	7 bar
Trailer	530 cfm	2600 kg	10 bar
Trailer	893 cfm	3700 kg	8 bar
Trailer	938 cfm	5300 kg	12 bar
Trailer	1020 cfm	5300 kg	10.3 bar
Trailer	1102 cfm	5300 kg	8.6 bar
Electric Mobile	1286 cfm	2750 kg	5-14 bar



Pump Accessories

Materials and Parts can be supplied at cost price + 20%

DN150 Standpipe	clearance 4.2m
DN150 Standpipe	clearance 4.8m
DN150 Standpipe	clearance 5.2m
DN150 Standpipe	clearance 5.8m
DN150 Standpipe	clearance 6.5m
DN150 Standpipe	clearance 8.6m
DN200 Standpipe	clearance 4.2m
DN200 Standpipe	clearance 4.8m
DN200 Standpipe	clearance 5.2m
DN200 Standpipe	clearance 5.8m
DN200 Standpipe	clearance 6.5m
DN200 Standpipe	clearance 8.6m
Hose & Cable Floats	
HDPE pipe	
Pontoons	
Flow Meters	
Suction Hose	
Discharge Hose	
Remote Monitoring	



Portable Buildings

TYPE	SPECIFICATIONS
Dome Shelters	custom-made
Portable site offices	6.09 m & 12.19 m options, fully furnished
Portable Lunchroom	6.09 m & 12.19 m options, fully furnished
Ablution Block	6.09 m x 2.43 m, 4 cubicles
Sea Containers	6.0 m x 2.5 m & 12.0 m x 2.5 m
Portable Toilets	1160 mm x 1160 mm x 230 mm
Portable Showers	1150 mm x 1150 mm x 230 mm



Lighting Towers Diesel & Solar

LAMP POWER	ILLUMINATED AREA	RUNNING TIME
1800 W	5000 / 500 m²	100 hours
4 x 320 W	4500 / 4200 m²	143 hours
4 x 320 W	5000 m²	218 hours
4 x 350 W	5000 m² @ 20 Lux	220 hours
4 x 350 W	5.4 lm /m² @ 28.328 m²	150 hours
6 x 350 W	315,000	145 hours
6 solar x 100 W	65,000	56 hours
2 solar x 100 W	14,000	35 hours



Power Accessories

TYPE	SIZE	OUTLET
Distribution Board	32 amp	8 x 240V 15A 1 x 415V 20A 1 x 415V 32A
Distribution Board	63 amp	10 x 240V 15A 2 x 415V 20A 2 x 415V 32A
Distribution Board	125 amp	8 x 240V 15A 2 x 415V 32A
Power Cables	20 amp	cable length can be customised
Power Cables	32 amp	cable length can be customised
Power Cables	63 amp	cable length can be customised
Power Cables	100 amp	cable length can be customised
Power Cables	Hardwire	cable length can be customised
Load Banks	100 - 500 kW	in all application
Control Panels, Soft Starters & Variable Speed Drivers are available		



Mobile Fuel Supply

TYPE	SIZE	COMMENTS
Fuel Tank	1000 L	Double bundled, multiple fuel connections
Trailer Mounted	1000 L	Double bundled, multiple fuel connections
Fuel Tank	2000 L	Double bundled, multiple fuel connections
Fuel Tank	4000 L	Double bundled, multiple fuel connections
Fuel Tank	10000 L	Double bundled, multiple fuel connections
Trailer Mounted	2000 L	Double bundled, multiple fuel connections

Plant Trailers, Tandem Trailers, Cage Trailers, Pressure Washer Trailers and Fire Fighter Trailer are also available for hire.



Solar Skid

FEATURES	METRICS
Power	1.78 kWp
Voltage (Voc)	196.8 v
Current (Isc)	11.45 A
Dimensions	4455 mm x 2240 mm x 300 mm
Weight	750 kg



Traffic Lights & Signage

CATEGORY	POWER SUPPLY
Traffic Lights	Nominal 12 Volts. Range 10.8 - 14.2V
Variable Message Signs	Nominal 12 Volts. Range 10.8 - 14.2V



Solar CCTV

MAKE	CAMERA
Solareye	2x4MP acusense deep learning cameras, 50m night vision



Solar Hydration Station

FEATURES
Compatible with all 1000L single use water packs
Optional 1500L fixed water storage tank
Insulated enclosure to minimise direct sunlight exposure of water pack
Easy access for forklift load/unload
Flexible inlet hose with quick release connection



Dust Suppression Fans

MAKE	MODEL	ELECTRICAL ENGINE POWER
Generac	DF 4500	4kW
Generac	DF 7500	7.5kW
Generac	DF 15000	15kW
Generac	DF 20000	20kW
Generac	DF 50000	45kW
Generac	DF 110000	100kW



Commercial Vehicles

SEATS	CATEGORY	MODEL
12 & 22	Mine Spec Buses	Toyota HiAce / Coaster & VW Crafter
7	Mine Spec 4x4 Wagon	Toyota Land Cruiser & Prado
2 & 5	Mine Spec 4x4 SC & DC	Toyota Hilux & WorkMate
5	Mine Spec 4x4 DC Steel Tray	Mitsubishi Triton & Isuzu D-Max



Portable Steel Barrier

FEATURES	METRICS
Weight (12 m)	1155 kg
Weight (6 m)	562 kg (male) & 555 (female)
Lifting Capacity (6 m)	6.09 m & 12.19 m options, fully furnished
Lifting Capacity (6 m)	4.1 times the weight of 6 m Section.
Lifting Capacity (12 m)	2.0 times the weight of 12 m Section.



Bulk Water Storage

BRAND	SIZE	COMMENTS
Break Tanks	2 - 60 KL	Fitted with stair & gantry system
Water Storage	2 - 56 KL	Can be modified to suit any application



Machine Attachments

CATEGORY	ATTACHMENT	CATEGORY	ATTACHMENT
Excavator	GP Bucket	Tool Handler	GP Bucket
Excavator	Batter Bucket	Tool Handler	Rake Bucket
Excavator	Trenching Bucket	Tool Handler	Stemming Bucket
Excavator	Skeleton Bucket	Tool Handler	Grain Bucket
Excavator	Sieve Bucket	Tool Handler	Forks
Excavator	Screening Bucket	Tool Handler	Jib
Excavator	Trapezoidal Bucket	Tool Handler	Log Forks
Excavator	Tilting Bucket	Tool Handler	Man Cage
Excavator	Rock Breaker	Tool Handler	Tyre Grab
Excavator	Auger	Tool Handler	GPS
Excavator	Misu Heavy Duty Screen		
Excavator	GP Grapple	Backhoe	GP Bucket
Excavator	360° Grapple	Backhoe	Trenching Bucket
Excavator	Rock Grapple	Backhoe	Batter Bucket
Excavator	Hydraulic Grapple	Backhoe	Batter Bucket (Digger)
Excavator	Mechanical Grab	Backhoe	Auger
Excavator	Hydraulic Grab	Backhoe	Forks
Excavator	Sleeper Grab	Backhoe	GPS
Excavator	Plate Compactor		
Excavator	Compaction Wheel	Telehandler	GP Bucket
Excavator	Tree & Stump Mulcher	Telehandler	Batter Bucket
Excavator	Ripper	Telehandler	Forks
Excavator	GPS	Telehandler	Jib
		Telehandler	GP
Skid Steer	GP Bucket		
Skid Steer	Rake Bucket	Grader	Roller
Skid Steer	Forks	Grader	GPS
Skid Steer	Bucket Broom		
Skid Steer	Auger	Tractor	Grid Roller
Skid Steer	Trencher	Tractor	Hydraulic Angle Broom
Skid Steer	Levelling Attachment		
Skid Steer	GPS		

AUSTRALIA'S BIGGEST RANGE OF EXCAVATORS



SANY

FINANCE AVAILABLE



SALE ON NOW - MAKE AN OFFER & SEE HOW LOW WE'LL GO!

Sany SY50U 5.3t Mini Excavator

Technical Specifications

Weight: 5.3 tonnes
Length: 5.39 m
Width: 1.96 m
Bucket Capacity: 0.39m³
Engine: Yanmar 4TNV88C-PSY

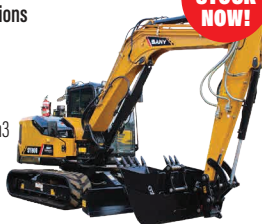


IN STOCK NOW!

Sany SY80U 8.8t Excavator

Technical Specifications

Weight: 8.8 tonnes
Length: 7.1 m
Width: 2.2 m
Bucket Capacity: 0.39m³
Engine: Yanmar T4F



IN STOCK NOW!

Sany SY155U 16t Excavator

Technical Specifications

Weight: 16 tonnes
Length: 7.3 m
Width: 2.49 m
Bucket Capacity: 0.6m³
Engine: ISUZU 4JJ1X



IN STOCK NOW!

Sany SY215C 22t Excavator

Technical Specifications

Weight: 22 tonnes
Length: 9.68 m
Width: 2.98 m
Bucket Capacity: 0.93m³
Engine: Mitsubishi 6D34-TL



IN STOCK NOW!

Sany SY305H 31.5t Excavator

Technical Specifications

Weight: 31.5 tonnes
Length: 10.66 m
Width: 3.19 m
Bucket Capacity: 1.6m³
Engine: Isuzu GH-6HK1



IN STOCK NOW!

Sany SY500H 55.5t Excavator

Technical Specifications

Weight: 55.5 tonnes
Length: 12.1 m
Width: 3.36 m
Bucket Capacity: 2.5m³
Engine: Isuzu 6WG1X



IN STOCK NOW!



GENMAC

QUALITY ITALIAN MADE
GENERATORS

FINANCE AVAILABLE



AVAILABLE MODELS	POWER
DYNAMIC G20PS	20kVA
STRONG G30PS	30kVA
STRONG G45PS	45kVA
KING G60PS	60kVA
KING G80PS	80kVA
QUEEN G100PS	100kVA
ROYAL G300PS	300kVA

Authorised Dealers for



SANY

Husqvarna
CONSTRUCTION

GENMAC



Euromacchine
PUMPING INNOVATION

Chicago
Pneumatic

Sany Excavators are available in WA, NT, and QLD only.

BROOKS
EQUIPMENT

☎ 1300 BROOKS (276 657)

@ sales@brooksequipment.com.au

🌐 www.brooksequipment.com.au