

THE *Eneabba*

SPRING 2021 ISSUE 6

Sany & Brooks Join Forces

A DEALERSHIP IS FORMED

- Aerison Sets A New Standard
- A Wander Out Yonder with ARG
- Grounded Mining Communities



BROOKS
ACCESS

BROOKS
TRANSPORT

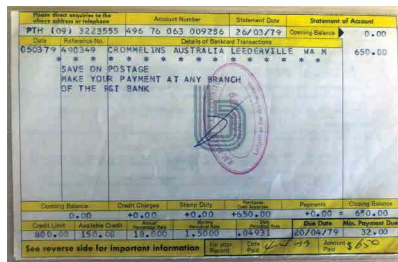
BROOKS
EQUIPMENT

BROOKS HIRE

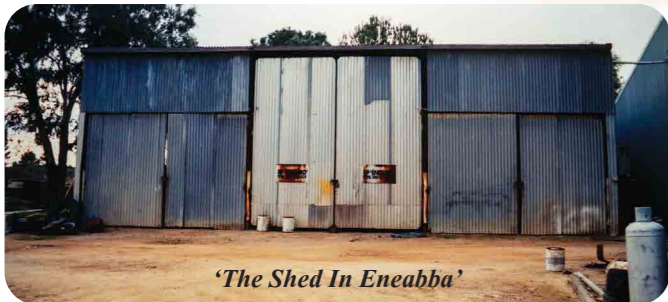
The story of Eneabba

When 23 year old Doug Brooks recognised an opportunity to hire out equipment to the mining industry in WA in 1979, he knew it was something he had to pursue. With no business experience but plenty of ambition, young Doug scrambled together every dollar he had to purchase two disassembled compressors, with the remainder of the bill being settled by bankcard.

1979



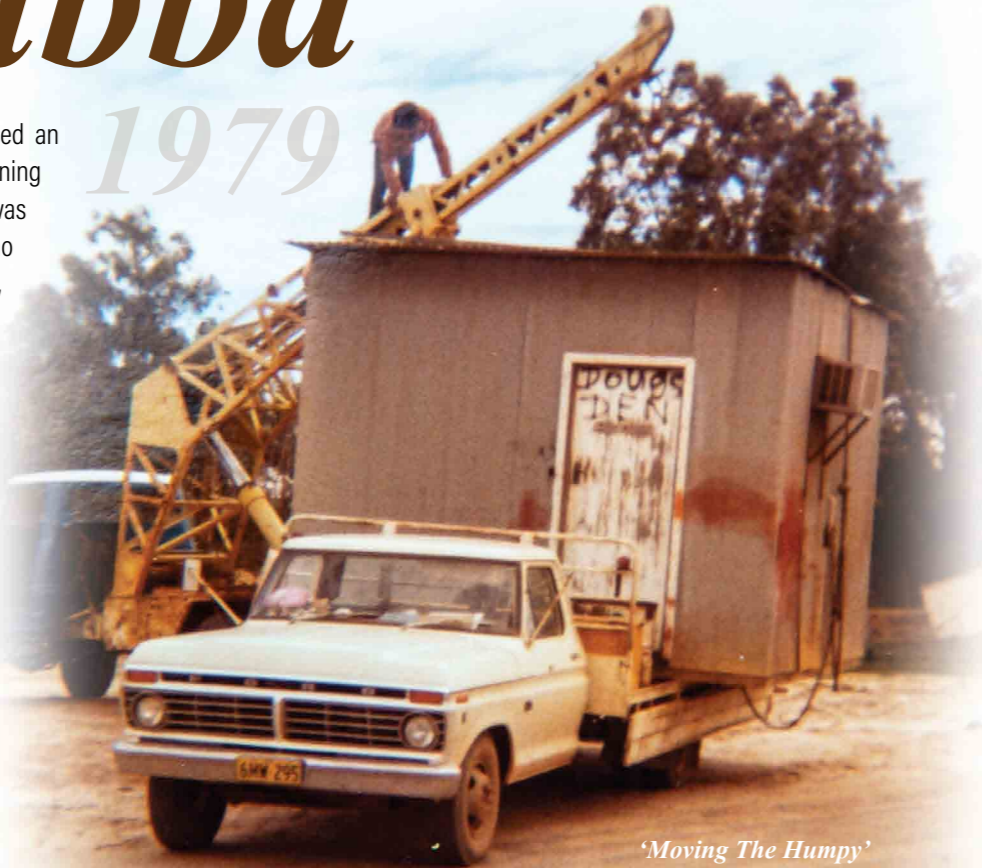
At the time, Doug was working 12 hour days as a Fitter on Barrow Island, and he fixed the unserviceable compressors in his spare time. After a few months of paying off his debts, Doug then made the bold decision to leave his job as a Fitter and start his own hire business.



'The Shed In Eneabba'

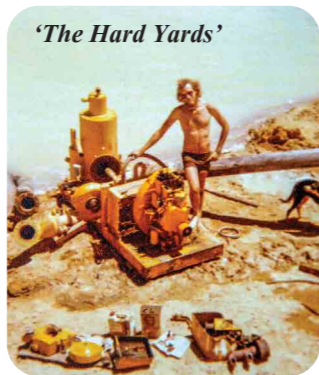
He opened 'Brooks Hire Service' and ran the business from a shed in the remote WA town of Eneabba. All the while Doug was living in a 'humpy' at the rear of the shed. There were many that warned him of the difficulty of starting a new business in a very competitive industry, but Doug was determined and it was only a matter of time before he was turning a profit on his compressors.

What started as two compressors on hire, soon turned into twelve pumps on hire, but the turning point came when Doug purchased his first piece of mobile equipment, an eight tonne JEC crane. The crane was purchased by tender in Perth and Doug didn't have the \$500 needed to freight the crane to Eneabba, so he drove it for 13 hours to get it there himself, with his trusty dog on board of course. This is a testament to the lengths that Doug would go, to ensure the success of Brooks Hire.

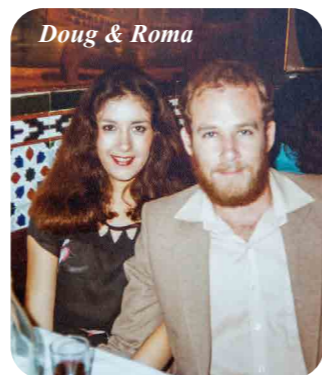


'Moving The Humpy'

There are many great stories that came out of that shed in Eneabba. It was the foundation of Brooks Hire and the place where all of the 'hard yards' were done. Doug would work long hours during the week, and then drive to Perth on the weekend for parts. It was during one of these trips that he met his future wife, Roma.



'The Hard Yards'



Doug & Roma

By 1983, with the business continuing to grow, and Doug pursuing his life with Roma, Brooks Hire set up shop in Hogarth Street, Cannington. Then in 1990, they purchased their own yard in Canning Vale, where the Head Office is still located today. But it is that shed in Eneabba that will be remembered as the birth place of Brooks Hire Service.



From the MD...

Another edition another record breaking few months. You aren't going to believe these numbers. 252 - the amount of brand-new equipment Brooks has taken delivery of in the last 3 months. 260 - the number of cupcakes delivered to branches Australia wide in August to help raise funds and build awareness for the RSPCA. 190 - the number of Brooks employees Australia wide. 15 - the number of months taken to see Sany and Brooks sign a formal dealership agreement.

After months of negotiation Sany has appointed Brooks Equipment as the official Sany dealership for Western Australia. It is exciting times and we're expecting great things. With GM Nathan Fenemer at the helm, we believe this partnership will grow from strength to strength. Sany are already the Number 1 selling excavator in the world, and here at Brooks we will make them the Number 1 selling excavator in Australia.

In this edition of the Eneabba, we showcase a variety of our valued clients. Aerison give us an insight into how the construction industry has changed over the last 30 years. We delve into the benefits of remediation works with R&B Contracting. Grounded Group explain the importance of quality mining accommodation. The Eneabba's industry spotlight is on ARG Civil and Mining Services and their appointment as preferred supplier to the Pilbara.

I'd like to welcome all our new starters and to remind you that safety is always at the forefront here at Brooks. It is a 24 hour a day, 7 days a week job. Safety is an attitude and here at Brooks we believe anyone with the right attitude can help reduce accidents in the workplace. Congratulations to Bruce Brolsma for his approach to safety in the workshop. We all need to keep in mind the importance of workplace safety whether in the office, yard, onsite or workshop.

As you flick through this edition of the Eneabba you will come across Brooks Access' new additions. The elevated work platforms and articulated booms will take users to brand new heights. From the ground to 125ft in just 95 seconds, that is what I call impressive. Just ask Brooks very own Financial Controller Penny Chu, who got a firsthand experience at the Welshpool yard. Up up and away...

Here's to another successful quarter as we look forward to what the future has in store.

Stuart Brooks

Stuart Brooks
Managing Director

BROOKS HIRE

CONTACT DETAILS

Brooks Hire Service Head Office
30 Coultoun Way, Canning Vale WA 6155
Phone: 1300 276 657
Email: sales@brookshire.com.au
www.brookshire.com.au

The Eneabba is a Brooks Hire Service Pty Ltd publication. All photographs and written articles remain the property of Brooks Hire Service Pty Ltd. No reproduction in whole or in part of this publication is allowed without the permission of the Managing Director.

If you would like to make a submission, please email
marketing@brookshire.com.au

Digital Distribution 7,392 - Printed Copies 5,000

Contents

- 03 One Team, Seamless Delivery**
Aerison sets a new standard.
- 05 Civil Contractors Federation NSW**
Assisting employers in the civil industry.
- 07 Pilbara Dreaming**
ARG Civil & Mining Services take a wander out yonder.
- 09 Grounded Mining Communities**
Building Tomorrow, Together.
- 11 When Industries Work Together**
Focus on wet hire.
- 13 Building The Future, Restoring The Past**
R&B Contracting undertake remediation works.
- 15 Events & Exhibitions**
CCF NSW Earth Awards, CCF NT Earth Awards & the Perth Tradie Expo.
- 17 Community News**
Brooks Hire around the nation.
- 19 New Machines**
Take a look at our latest arrivals.
- 21 Sany And Brooks Join Forces**
The making of a dealership.
- 24 On The Up And Up**
Brooks Access news.
- 25 Brooks Branch News**
New staff, old staff, and Vinny's Kitchen.
- 31 The Puzzler Page**
Relax with a cuppa and flex your brain.
- 33 Kids Corner**
Join the dots and colour in to win.
- 34 Snap That**
Take a look at our staff photography competition entries.
- 35 Equipment Hire List**
View our entire fleet list with all the specifications.

One Team, Seamless Delivery

AERISON SETS A NEW STANDARD



Founded in Perth, Western Australia in 1988, Aerison has grown over the years from a specialist environmental engineering company to a broad based disciplined engineering and construction company. We asked Aerison to tell us about their story.

What was the construction industry like in Perth in 1988, and how has it changed over the last 30+ years?

The construction industry in Western Australia has changed significantly since the inception of Aerison over 33 years ago. Systems in place to protect our workforce from the inherent risks of construction are far greater than before and continue to improve to provide the security that our people deserve.

The technology for our engineering and design works is so much faster now with high-speed and large-file data delivery drastically improving productivity. The calibre of our personnel continues to improve with the education system and career progression plans supporting high-quality and life-long career development. On this front, Aerison continue to see a higher calibre of graduates coming through our program each year. It is an exciting industry, working in a country that pushes the boundaries for scale and speed – which is particularly prevalent in the Australian resources sector.

Tell us about the markets that you service. Which market do you perceive as Australia's strongest for future growth?

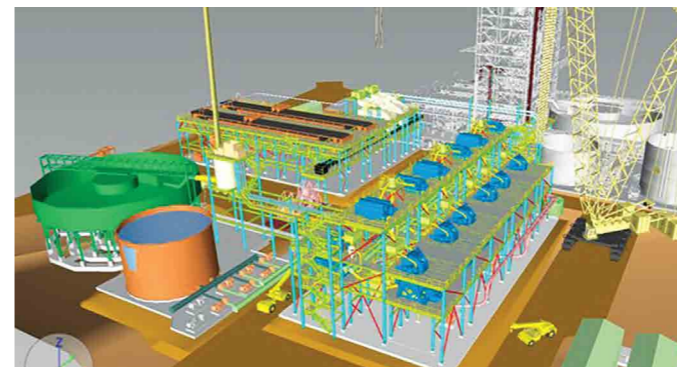
Aerison specialise in engineering, construction and maintenance services for asset owners across Australia. Our work is performed across several markets including mining and mineral processing, infrastructure – ports, water infrastructure, rail; and energy – power generation, switchroom manufacturing, renewables and storage. In addition, Aerison also have a specialist division providing engineered solutions to control air and noise pollution coming from industrial processes which is becoming increasingly important from an ESG (Environmental, Social, and Governance) perspective. Using our design, manufacturing and installation capabilities, we custom build equipment to remove heavy metals, toxins, dust or odours from emissions caused by mining crushing & screening, chemical manufacturing, refineries, waste water treatment plants and the like.

With the ever-increasing ESG responsibilities that our clients are facing, Aerison is experiencing changes to our client's assets where processing plants are becoming more efficient and are demanding "green" solutions for energy, emission control and waste management. There is higher demand for resources to support the emerging electric vehicle and battery energy storage markets.

Australia's supply of primary minerals and its growing capacity to produce second-stage chemical products for the new-energy market is an important future industry that we see will underpin growth in our economy. Aerison continue to invest in its engineering, manufacturing and construction divisions that support these new industries and ensure the local economy benefits most from this global transformation.

How is technology changing the way you do business?

Aerison are providers of technical and construction services. For what is typically a manual labour-based service, we embrace change that improves safety and efficiency in our business. Technology has shaped and improved the way we onboard, mobilise, and maintain training and competency records for our personnel. Through a digital application on a tablet or phone device, our employees and supervisors keep track of the whereabouts of all personnel information, including licenses or accreditations to perform the works we are completing, significantly improving our human resources and safety functions.



In our service provision for engineering and design, the use of 3D laser scanning connected with our modelling software, reduces error and time with site measuring, clash detection, and waste materials. Our customers now receive greater accuracy in design, and furthermore through our modularised assembly system, more of the work can be prepared in the controlled environment of our manufacturing workshop, limiting the interferences with onsite operations teams.

Environmental sustainability is an important part of Australia's future. How is Aerison contributing to reduce the impact of industry on the environment?

Aerison provides engineered solutions which reduce the environmental impact of our clients' activities. In doing so, we align with the values and direction of our clients, which therefore prompts the question; what are we doing to lower our environmental impact? We have a range of initiatives which minimise our environmental footprint and provide project-specific solutions to drive value for our clients. At a general level, our business offices have colour-coded recycling bins for glass, organics and general waste, and our construction sites have demarcated recycling areas for wood, steel and plastics. Our sites and head office facilities do not have single-use plastic cups or bottled water, therefore reducing our impact on plastic waste.

At a project-level, Aerison recently addressed a client's need to increase the volume of product it needed from a process circuit. Instead of building a brand-new circuit as originally directed, our design team reconfigured the existing facility and reused nearly all of the plant. The savings in less new steel and plastics appealed to the customer which lowered the capital intensity and environmental footprint whilst still achieving the desired output.

Aerison has projects all over Australia, tell us about the projects you are working on right now, and what's in the pipeline?

Being a business with a head-office in Western Australia and going through a mining boom, we have seen a lot of demand from this sector in particular. Aerison have strong relationships with the Tier-1 mine asset owners and are currently delivering a number of projects in the Pilbara region of WA. Two of our major works packages include a significant upgrade to the overland conveyor and ore processing circuits for two iron ore majors. Our scope includes the engineering support, fabrication and installation of structural, mechanical, piping and electrical works. These are both very exciting projects as they utilise our engineering, construction, fabrication, and installation teams whilst working in and around a live operational plant. Both projects are critical to the processing of iron ore for these owners and collectively employ around 280 personnel.

Aerison were recently certified as the only Western Australian company able to fabricate steel components for railcars. Governed by international standards, Aerison achieved this through its efforts to support the Public Transport Authority 'Metronet' program and are working with Alstom to build the railcar program for the Perth metropolitan network over the next few years.

Aerison have a strong presence as manufacturers of electrical switchrooms and currently have a workshop full of various size and scale rooms going to clients across Australia. These rooms provide a high-quality, cost efficient and timely solution for the installation of new motor control centres, variable speed drives and HV & LV switchgear.

What lies ahead for Aerison includes a range of turn-key design and construction projects covering water treatment, power generation facilities, mineral processing circuits, grain handling infrastructure and air pollution control facilities, as well as various mechanical and electrical maintenance works.

With a strong value-based culture, Aerison have been rewarded with loyal staff, committed delivery partners, and repeat customer investment. We remain confident in the strength of the market and look forward to generating more value for our supporters well into the future.

AERISON 1300 590 000
sales@erison.com

We're Here to Support You

CIVIL CONTRACTORS FEDERATION NSW

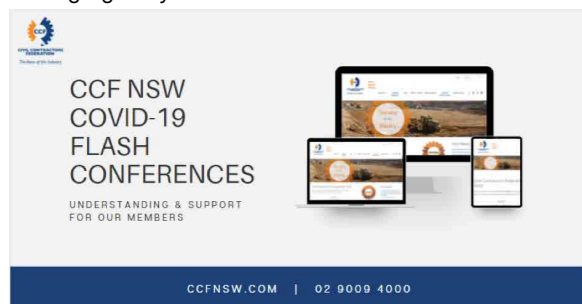
The Civil Contractors Federation (CCF) is Australia's peak civil construction industry body. It is the only Member based representative body charged by the Federal Government with representing all employers in the Civil Construction Industry under the Fair Work Act. There are CCF branches in every state of Australia. This quarter, we focus on the New South Wales division, and delve into the assistance they are providing their Members through the pandemic crisis.

CCF NSW's sole purpose is to support New South Wales employers in the civil construction industry. Irrespective of where in NSW a business is operating, or how big it is, CCF NSW's role is to protect, grow, and give a voice to those businesses.

"As a not-for-profit organisation with a Board elected from our civil contractor Members, supporting civil is all we do," explains David Castledine, CEO of CCF NSW.

Over the last 18 months, the COVID-19 pandemic has introduced a whole new set of challenges for employers. With restrictions and lockdowns changing on a daily basis, CCF NSW has been working tirelessly to keep Members up to date as the situation evolves.

"We are continuing to run short, Flash Conferences to ensure that our Members and businesses know what can be done during these tough times," said David. "Often, it's a moving target and we must be as agile as we can, given new government rules, sometimes changing daily."



"We represent the very largest to the very smallest of businesses and each has an equal vote under our constitution"

David Castledine, CEO - Civil Contractors Federation NSW

CCF NSW is the only 'civil-specific' industry body on a number of Government COVID working groups; ensuring the voice of Member civil contractors is being heard by decision makers.

Members of CCF NSW are benefitting from accurate and timely updates on COVID-19 related information specific to the Civil industry.

"While Covid changes our industry's focus week by week in NSW, our primary role is to ensure the civil industry's businesses, and staff, are protected. Therefore, we are always here for you in this ever-changing landscape," said David. "This is what we do... civil specific support delivered when our Members most need it."

The fluidity of the COVID-19 situation has left many employers unclear on the most recent Government requirements. As Members of CCF NSW ourselves, Brooks Hire has been grateful for the updates and clarification that CCF NSW has provided. "Thanks to CCF NSW's attention to detail, we've been able to support our New South Wales staff and plan for every possible scenario," said Lenore Brooks, Hire Manager for Brooks Hire.

Benefits to CCF NSW members extend beyond the COVID-19 landscape to all matters that affect the Civil Construction industry including wage reforms, industrial relations, security of payment contracts and more.

In addition to supporting members through these issues, CCF NSW also host a variety of different social networking activities including the well renowned Earth Awards.



The Earth Awards celebrates the success of Civil Construction companies who have been involved in projects that have excelled in Project & Construction Management, Innovation, People Development & Training, Quality, Safety, Environment, and Stakeholders. This year's Earth Awards were held in June at The Big Top, Luna Park. With over 600 attendees, it was the biggest Earth Awards event to date.

There are over 50 different events that CCF NSW hold each year. Most are for Members only. These include the annual Golf Day, the State of State Luncheon, and various Regional Meetings touching on key topics within the civil industry.

With nearly 500 NSW employer Members, ranging from Tier 1 ASX listed multi-national firms to single person businesses, 45% of which are located in regional and rural NSW, CCF NSW represents a diverse Membership bound by a common interest in constructing the civil infrastructure NSW so desperately needs.

Membership to CCF NSW is open to all employers, traders or partnerships in New South Wales. There are two categories of membership, Contractor Members who 'do' civil infrastructure work in NSW, and Associate Members who service and supply Contractors in their endeavours.

Contractor Members are businesses involved in a variety of civil infrastructure projects including roads, railways, mines, water and utility infrastructure, airports, land development and more.

The Civil Contractors Federation NSW encourages all NSW employers in the construction industry to join. It takes five minutes, and you can commence accessing benefits immediately.

For more information on Membership, please visit <https://ccfnsw.com/Join/Why-Join-as-a-Contractor> or call **02 9009 4000** to speak to one of our Membership support consultants.



INDUSTRY SPOTLIGHT

Pilbara Dreaming

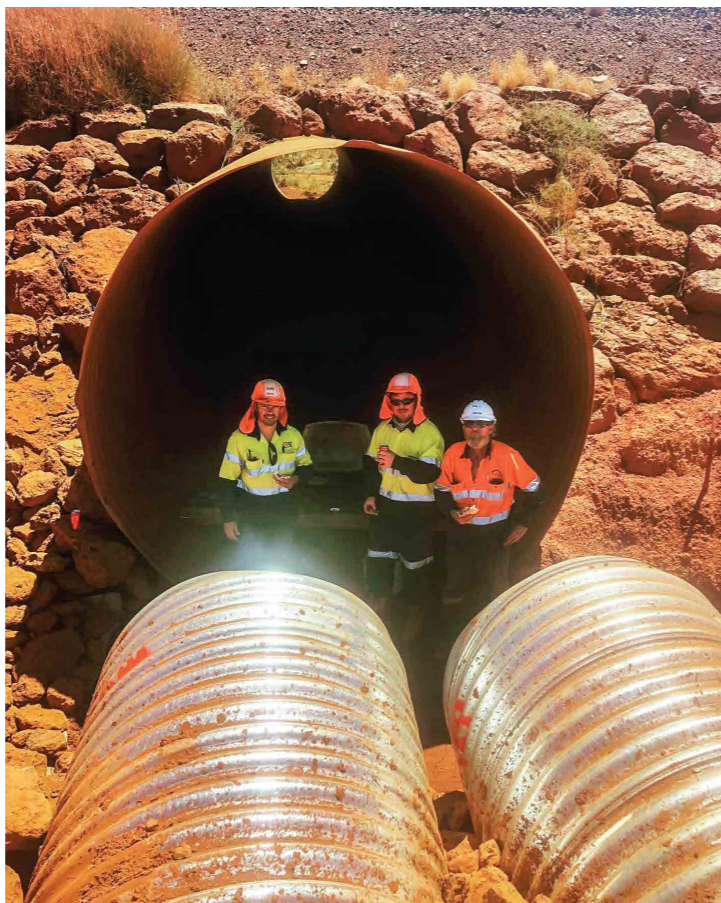
ARG Civil & Mining Services wander out yonder

This edition, we go behind the scenes with Geoff Rayner, Director of ARG Civil and Mining Services. Geoff, and fellow ARG management team have been in the construction industry for over thirty years. Having experienced the industry first-hand, they saw an opportunity to 'do things better' than the usual providers, and so ARG Civil & Mining Services was formed.

In a relatively short time, ARG is quickly establishing themselves as a preferred contractor in the Pilbara Region. Recently they have been appointed the Culvert Storm Water Drain Management contract at Eliwana Mine.

Eliwana Mine was opened by Fortescue Metal Group (FMG) in December 2020. Located 90 kilometres west of Tom Price, the site contains significant amounts of high iron content bedded iron ore. The operation includes a new dry ore processing facility, with capacity of 30 million tonnes per annum. The mine's new 143km rail line is in the final stages of construction.

ARG's main operation at the mine is the installation of culverts ranging in various diameters, and establishing drainage scour protection throughout the mine site.



In addition to Eliwana Mine, ARG has also completed borrow pit works and culvert drains at Cloudbreak Mine.

The Pilbara Region in the northwest of WA is well recognised for its stark red earth, and soaring day time temperatures. Despite the harsh landscape, ARG has been relentless in their pursuit to establish themselves as a major player in the area.

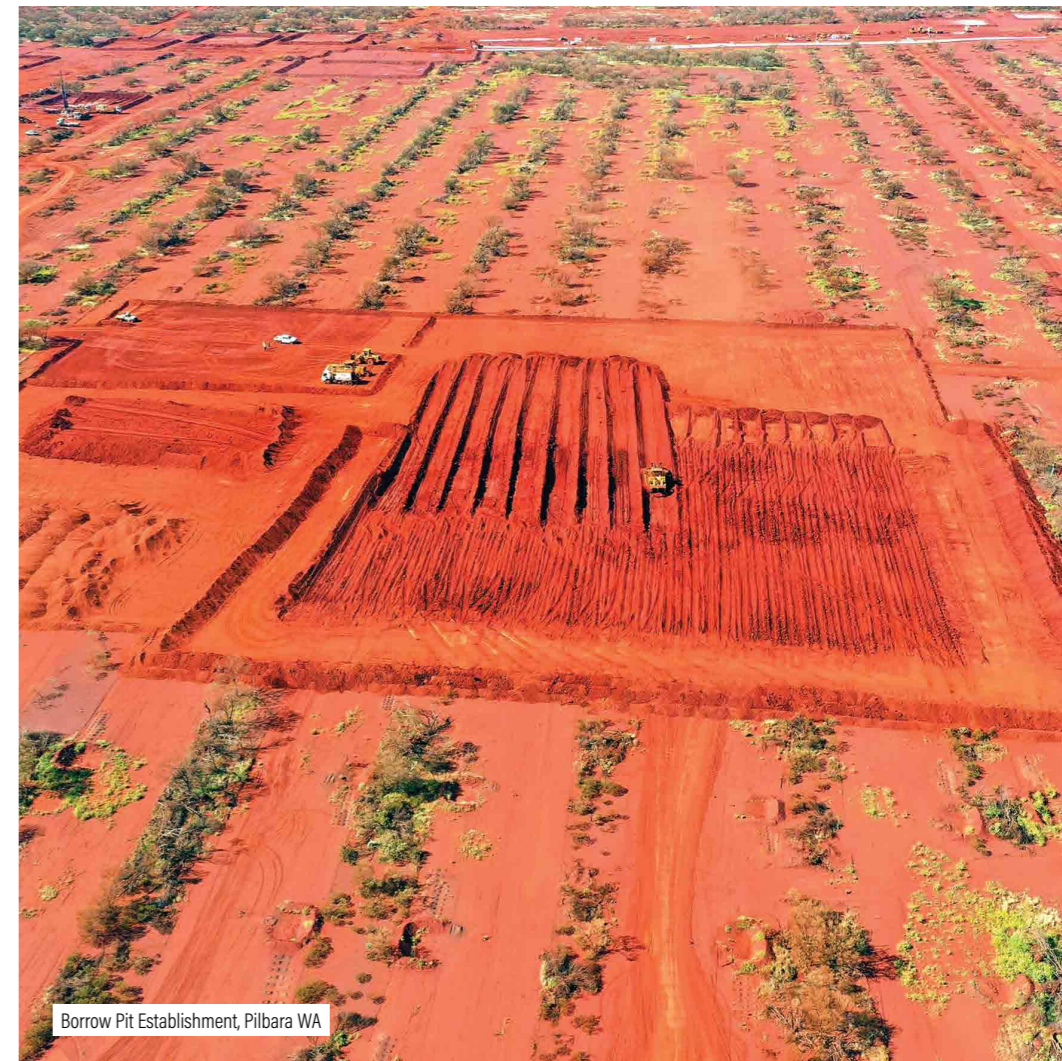
"We hone our skills in one of the harshest environments in the country..."

Geoff Rayner, Director
ARG Civil & Mining Services

"We go the extra mile," said Geoff Rayner. "We do the hard and inelegant works, all while making sure the client is happy, our workers are safe, and we are having a good time."

FIFO (fly in, fly out) work isn't for everyone and it takes a special team of individuals to make a project run smoothly. ARG has employed a star team of engineers and operators to make sure they can deliver the highest standard of work to their clients. The whole ARG team shows a dedication to safety, pursuit of quality, and sense of giving back to the community.

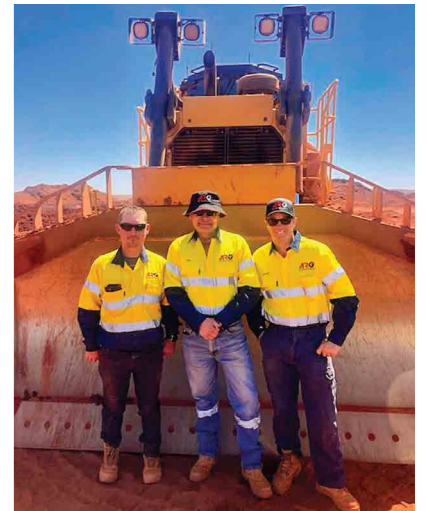
ARG has a presence at Cloudbreak, Christmas Creek, Solomon, and Eliwana, and is proud to be working alongside FMG in training and development of indigenous programs. ARG proudly support Aboriginal engagement and employment, often boasting 20+% engagement, and with direct employment.



Specialising in civil mining infrastructure, earthworks, tailing dams / transfer ponds, CSP culvert installation, and haul road construction, ARG Civil are dedicated to making a name for themselves within the industry.

"We are passionate about mining in Australia and see it as one of Australia's largest employers and contributors to the economy," explained Geoff.

We at Brooks Hire couldn't agree more and wish ARG all the best for a strong and healthy future.



ARG Civil & Mining Services
Geoff Rayner - 0407 987 725

Building Tomorrow, Together

GROUNDING MINING COMMUNITIES



Grounded Construction Group has quickly become a leader in the mining and construction sectors, renowned for building sustainable and well-grounded infrastructure for mining communities in remote outback and rural areas Australia-wide. Grounded specialises in the installation of mining camps and operational facilities, as well as permanent and temporary modular portable buildings. Grounded proudly offers turnkey services that cover all aspects of project management and development, including design, installation, refurbishment and relocation of existing mining villages and camps.

Some of the projects Grounded has completed include:

- FMG Eliwana Permanent Village
- FMG Christmas Creek Village expansion
- Iluka Resources Dandaragan Village
- Tronox Cataby Village
- Rio Tinto Wickham modular housing development

Grounded has also recently received approval to commence the Rio Tinto Hope Downs 1 project, which will involve a complete civil and installation of transit facilities.

Grounded's team of highly qualified and skilled personnel is capable of undertaking challenging construction projects that vary in size, complexity and location. With extensive experience in the industry, staff are trained to recognise and mitigate potential risks associated with a project and ensure strict adherence to current safety rules and regulations.



Grounded collaborates and liaises with its extensive network of contractors to ensure that every project is performed seamlessly and in a time-efficient manner, without compromising on quality. The all-encompassing service offered ensures that there is little risk of miscommunication between management, staff and contractors, and consequently avoids the delays and confusion that can inevitably result from engaging various companies on a single project.

“Grounded proudly offers turnkey services that cover all aspects of project management and development.”

Paul Natoli, Managing Director - Grounded Group

Grounded recognises the importance of surrounding mine site employees with everything they need to ensure that physical separation from home does not lead to feelings of isolation. Grounded prides itself on creating high quality, comfortable spaces equipped with the modern-day amenities and facilities that will ensure employees feel right at home. The company has demonstrated its dedication to fostering and supporting the wellbeing of all mine site employees through its development of the Karntama Wellness Centre at the Karntama Village at Christmas Creek. This state-of-the-art wellness centre includes a yoga studio, hair salon and massage parlour.

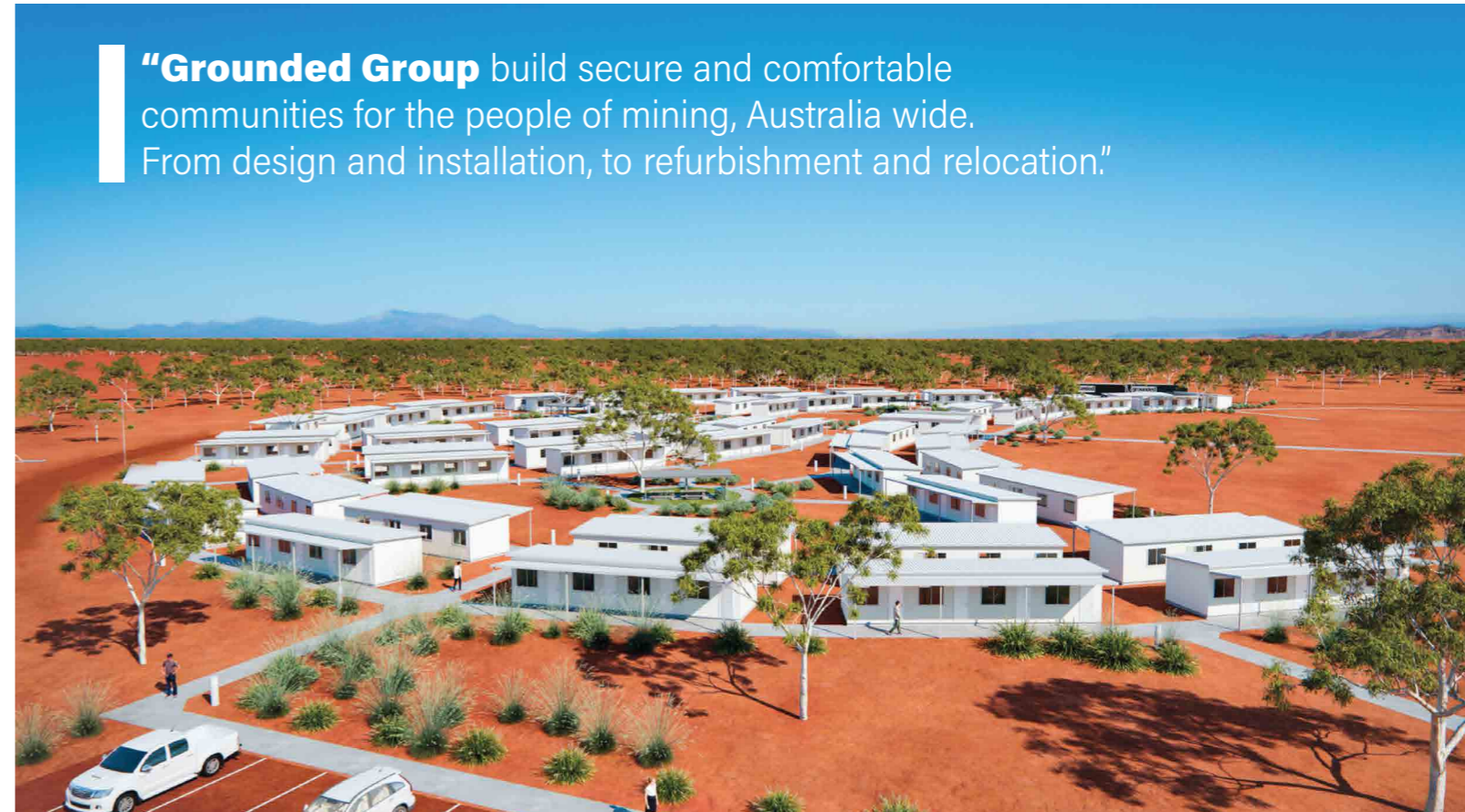


Grounded is especially proud to be the founding sponsor of the WA Mining Club Young Professionals (“WAMCYP”). The WAMCYP aims to inspire diversification and innovation in the mining sector by establishing a network of young mining professionals who are in the process of building their careers. The WAMCYP also provides industry professionals with a platform to share their personal insights and inspire open discussions about the future of the mining industry. In 2019, the WAMCYP, together with Grounded, designed and administered a survey to FIFO workers seeking their opinions on mining accommodation along with suggestions for improvement. The results of this survey have been critical to the development of innovative and inclusive mining communities all over the country, something Grounded is extremely proud to specialise in.

grounded.

08 9321 3398
admin@groundedgroup.com.au
groundedgroup.com.au

“Grounded Group build secure and comfortable communities for the people of mining, Australia wide. From design and installation, to refurbishment and relocation.”



FOCUS ON WET HIRE

All Excavator Hire

When industries work together.

Brooks Hire specialise in dry hire, however it is inevitable that from time to time we receive requests for wet hire equipment. When this happens, rather than turn the enquiries away, we try to point them in the direction of a company that we know and trust. In Western Australia, that company is All Excavator Hire.

All Excavator Hire (AEH) was established in 1989 by Richard and Mary Chapman. The company was built on a foundation of honesty, integrity, a hard day's work for a fair day's pay, and a 'can do' attitude. This code has seen AEH grow to become one of WA's leading construction companies, with an enviable reputation.

AEH's range of services include;

- Earthworks
- Drainage
- Pavement
- Utilities installation
- Acillary works
- Excavations
- Transport
- Project Management
- Supervision
- Road maintenance
- Plant and Labour Hire



“Honesty, integrity, a hard days work for a fair day’s pay, and a ‘can do’ attitude is the company’s code.”

Richard Chapman, Director - All Excavator Hire

Over the last 32 years, Richard Chapman has developed his skills and knowledge working on some of the State's most iconic projects, from Perth city, to the remotest regions in WA. Some of these projects are very well known to the Western Australian landscape including the construction of sea rock walls at Hillarys Boat Harbour, Mindarie Boat Harbour, and the iconic Mandurah Foreshore (pictured above).

AEH has been involved in high rise demolitions, sewer and storm-water drain construction, bridge abutments, flood damage repairs, and roadworks to some of WA's major highways including Reid Highway, Great Eastern Highway, Great Northern Highway, and Indian Ocean Drive.

All Excavator Hire has also been instrumental in larger mining projects in the Northwest of WA including Abydos, Andywell, Mt Dove, Kimberly Nickel, Copernicus, and KMG.

In 2012, Paul Chapman was appointed Operations Manager at AEH. Paul is a fully qualified Plant Mechanical Engineer, having completed his training with McMahon. As Operations Manager, Paul takes responsibility for all of AEH's large scale projects.

In 2013, Matthew Chapman joined the AEH team as the Plant Manager. Matthew ensures that all plant and equipment arrives on site on time and ready to use. His attention to detail and organisational skills ensure that all projects run smoothly with minimal down time.

Along with Paul and Matthew, the staff at All Excavator Hire are their greatest asset. They encourage all employees to embrace the company's core values as their own.

“A company is only as good as its people.”

Paul Chapman, Operations Manager - All Excavator Hire

“A company is only as good as its people. We will continue to invest in training and multi skilling through trainee programs and apprenticeships,” said Paul. “We encourage strong teamwork, honesty, and a positive attitude. We also place strong emphasis on community values, shared success, and profitable outcomes for all stakeholders.”

All Excavator Hire has access to an impressive fleet of equipment that is available for wet hire including excavators from 3 tonne to 60 tonne, loaders, skid steers, side tippers, water trucks, dump trucks, and hiabs. They also use their own equipment floats for plant relocation to ensure that no delays are incurred in project startups.



On occasions when AEH requires additional equipment, Brooks Hire are happy to step up and assist. In fact, AEH was one of the first businesses to put our RMHC Charity Digger to use. We've found that by helping each other, Brooks Hire and All Excavator Hire can work together to provide the best possible service for our customers, and that's what teamwork is about.



All Excavator Hire

- Richard Chapman - 0418 940 034
- Paul Chapman - 0438 464 065
- Matthew Chapman - 0438 794 734

Building The Future Restoring The Past



WITH R&B CONTRACTING

When you say the words 'Civil Construction', most people think of the new construction of buildings, roads, infrastructure, and the like. Civil Construction also involves the remediation and restoration of areas that have been degraded by previous works or natural disasters.

Rugendyke & Bashforth (R&B) Contracting are a northern NSW company that specialise in all types of Civil Construction, including remediation works. Based in Lismore, R&B have developed a broad client base - local and state government authorities, nationally recognised construction companies, large publicly listed agricultural firms, smaller local landholders and primary industries.

"We have the ability to formulate all necessary management plans for the safe undertaking of works on small to mid-sized civil construction projects," said Jason Bashforth, Co-owner of R&B Contracting.

"Our earthmoving services include driveways and access tracks (gravel or sealed), house and shed pads, including sourcing or disposal of clean material as required, and drain cleaning and formation."

Operating in a rural area, R&B also undertake works such as horse arena pads including supply and delivery of coarse sands as required, dam wall repairs, and dam design and construction.

R&B Contracting's mid sized Civil Construction projects include, rural and residential subdivisions, carpark pavements, retaining wall construction, underground service conduit installation, footpath construction, stormwater, mains water and sewerage reticulation, and bed level (causeway) construction.

When it comes to remediation and conservation projects, R&B have plenty of experience to offer.

"We have the ability to design, manage, and construct all nature of conservation projects."

Jason Bashforth, Co-owner - R&B Contracting

Their conservation works include;

- Riparian repair works
- Erosion repair (gully shaping and filling), including erosion around underground services
- Design and construction of drop structures
- Fire trail maintenance
- Causeway repair / removal / replacement
- Rock revetment construction and maintenance
- Beach skimming and dune replenishment
- Minor contaminated site remediation
- Dam and water storage design and construction
- Design and construction of access tracks

R&B Contracting has successfully completed a diverse range of conservation works around the NSW northern rivers region.

NSW DPI Fisheries - Bringing Back Snags to the Coldstream.



In the past, waterways throughout NSW, including the lower Clarence Catchment, have undergone extensive change due to urban, industrial and agricultural development. Erosion, drainage of floodplains and wetlands, installation of floodgates, construction of structures which restrict fish passage and removal of riparian and aquatic vegetation have all degraded fish habitat. This has put pressure on native fish populations and fishing opportunities.

In 2017, R&B Contracting were responsible for transporting approximately 120 large hardwood root balls and associated timber pins to various sites along the Coldstream, and Lower Clarence Rivers. Under supervision from DPI Fisheries, R&B successfully constructed new fish habitats (artificial log jams), to help restore the population of fish stock in the area.

Nymboida Tunnel Failure Goolang Creek Remediation.

When a water supply tunnel that feeds the Nymboida Hydro Power station failed, it created high flows of water that severely eroded the upper reaches of the Goolang Creek, impacting private properties and the downstream Nymboida Canoe Centre.

R&B were contracted by NSW Soil Conservation Service to undertake the instream repair and rehabilitation of the severely eroded Goolang Creek. This involved clearing of debris from landscape, providing environmental flow bypass, recovery of deposited sediments (approximately 3000m³), reconstruction of a rock lined stream with rock pools, and re-creation of the associated white water canoe course.

"This project was featured as a finalist in the NSW CCF Earth Awards for Excellence in Civil Construction."

Nymboida Tunnel Failure - Goolang Creek Remediation Project

R&B has also done some very different and interesting work including the disposal of a sperm whale, and emergency erosion repairs on the iconic Clarkes Beach at Byron Bay.



Currently, R&B Contracting are working on the Ottery Mine Remediation Project, located near Emmaville NSW.

Ottery Mine was worked from 1882 until 1957, and is the oldest principal ore refinery in Australia. Remnants of the mine infrastructure still exists at Ottery, though in a state of disrepair. Arsenic condensates and salt efflorescence from the former refinery process is evident. To ensure that the Ottery Mine does not present a significant risk to public health, work is being scheduled to reduce any potential contact with arsenic salts or arsenic rich drainage from the site.

The remediation strategy involves chemically stabilising historic tailings and waste rock and then encapsulating the material in existing mine voids. Excavated areas will then be topsoiled and revegetated. The works will improve environmental conditions and safety of the Ottery Mine, which is a popular local attraction.



Nothing is as important as restoring the land on which we live. R&B have surely proven their place of outstanding service in the delivery of a wide array of projects safely, innovatively and on-time.

RB R&B Contracting
Jason Bashforth 0428 107 097
Adam Rugendyke 0419 269 265

CCF NSW Earth Awards



Roll up, roll up!

Indeed, we all 'rolled up' for a fun night under the Big Top at this year's CCF NSW Earth Awards. The vintage circus themed event was held at The Big Top, Luna Park on Friday 4th June.

Brooks Hire proudly sponsored the Category 6 Project Award, which was won by Ventia Utility Services for their work on the Brangaroo Remediation Project. Mark Barbaro, our Sydney Branch Manager did an outstanding job on stage presenting the award.

Staff members representing Brooks on the night were Mal McDonald, Francisco Lagos, Michael Alarcon, and Jacob Keeble.

They were also joined by our special guests John Mortimer, Osvaldo Rios from Versatile, and Margaret Elsusu from Doyle Bros.



And the winner is...

Not to be outdone by NSW, CCF Northern Territory held an equally impressive Earth Awards Gala Dinner on Friday 25th June. Held at Mindil Beach Casino Resort, the event also included the Trainee and Apprenticeship Awards, Supplier of the Year Award, Subcontractor of the Year Award, and the Traffic Management Project of the Year Award.

For the second year running, Brooks Hire proudly sponsored the Rae Snodgrass Apprentice of the Year which was won by Luke Banfield from Hastings Deering Australia. Luke took home two awards on the evening, also winning the Mature Age Achiever. Brooks Hire NT Branch Manager David Evans did a fantastic job presenting the award.



CCF NT Earth Awards

Perth Tradie Expo



Alan from Adenco and Nathan from Brooks Equipment



Brooks Get Amongst It

Since its humble beginnings in 2014, the Perth Tradie Expo has grown to become Perth's 'Go To Event' of the year. This year, the extensive display of work wear, tools, machinery, and vehicles on show was bigger and better than ever. The three day spectacular stretched from Friday 18th to Sunday 20th June and was held at Ascot Racecourse.

For the first time ever, Brooks Group took part in the expo with an internal stand at the entrance of the Shell Scheme Marquee. From this prime position we displayed a range of Atlas Copco dewatering pumps, and Genmac industrial generators. We were lucky enough to have one of our Brooks Sany excavators on display at an outdoor stand giving Brooks extra exposure at the event.



The expo kicked off on Friday with sunny skies. A good crowd of tradies and 'do it yourselfers' were out and about to see the latest products. The good weather continued on Saturday and brought with it an even bigger crowd as families filled the venue. Although the weather deteriorated rapidly on Sunday, it was still a popular place to be, and it was the most successful turnout for the event since its inception.

Brooks Equipment GM, Nathan Fenemer took prime responsibility for manning the Brooks stand and was there on all three days to meet and greet. He was assisted by fellow Brooks staff members Linda Smith, Vinny Yap, and Mal McDonald. Young Dom Brooks also turned up for a shift but unfortunately he couldn't tear himself away from the army truck.



Dom Brooks at the Perth Tradie Expo

Community News

Brooks Around The Nation

We're Off And Racing!

Brooks Hire has just become the newest drag car sponsor for our Dalby Workshop Foreman, Jamie Folker.

Jamie's interest in motorsports developed from a young age. "I grew up going to race tracks to watch circuit and drag racing with my Dad as far back as I can remember," he said.

"Generally, my life in racing started at 15 when I got my first paying job and could afford to build. From 15 years old, I raced local CAMS circuit sprint events in rural SE Queensland which we did well at. We retired that car at the end of 2015," explained Jamie.

Jamie's current race car, a T Bucket Altered, was purchased as a non running project in early 2016. Over the next 18 months, Jamie proceeded to fully rebuild the bare chassis to include a 350 Chev motor on methanol making it 540hp, 2 speed power-glide modified by Harrington Race Transmissions, and a 9 inch Ford diff with strange centre and billet axles.

After an arduous process, a lot of money, and plenty of stress, the car passed its first licencing on 10th August 2018.

Over the history of owning the car, every part of the vehicle has been rebuilt or replaced. "The whole car was built by myself except the transmission, front end, and roll cage fabrication," said Jamie. "I take pride in this car. It is all driver with no electronics to control reaction and gear changes."



Photo credit to Racing Fix Photography & Media



Jamie Folker at Willowbank Raceway, Ipswich QLD

Jamie has now been competing in his custom built car for over 3 years. He competes in as many events as possible depending on life commitments, work, and Covid restrictions. "We spend a lot of time testing new set ups at Willowbank Raceway as this car is still in the R&D phase," said Jamie. "We race a lot at Warwick Dragway in the DAS Contracting Series and recently started attending Ironbark Raceway at Roma."

In 2020, Jamie travelled to Mackay for a 3 day event called Sugar City Powerfest. He has also competed at the Thunder 400 series at New Years Thunder in a modified class.

Being relatively new to the drag racing scene, Jamie is still somewhat of an 'underdog', however he did win a round at Warwick Raceway, and was runner up at Roma in the last round.

Jamie has already purchased a 6/71 Supercharger to fit to his motor, 'just for more HP and smiles'. "If that's not enough HP, we've got a big block Chev to fit," he said. His future goals are for himself and his car to go into the the 8 second 1/4 miles.

Jamie couldn't have made it this far without his team which has spent long days and late nights travelling to race tracks, and building and repairing with him in the workshop on weekends.

"I can't forget my sponsors who have been there with me from the start," he said. Massive shout out to **Neil's Parts**, **Kymik Transport**, and **Raw Performance**.

Best of luck Jamie, Brooks is behind you all the way. We can't wait to see you achieve your dreams.

Safety Always Wins



Congratulations to Bruce Brolsma, our Junior TA from the Bunbury WA Branch. Bruce always goes above and beyond to adhere to our safety codes, which is why he is being presented with the Safety Award by HSEQ Manager, Rod Johnson.

RSPCA Cupcake Day

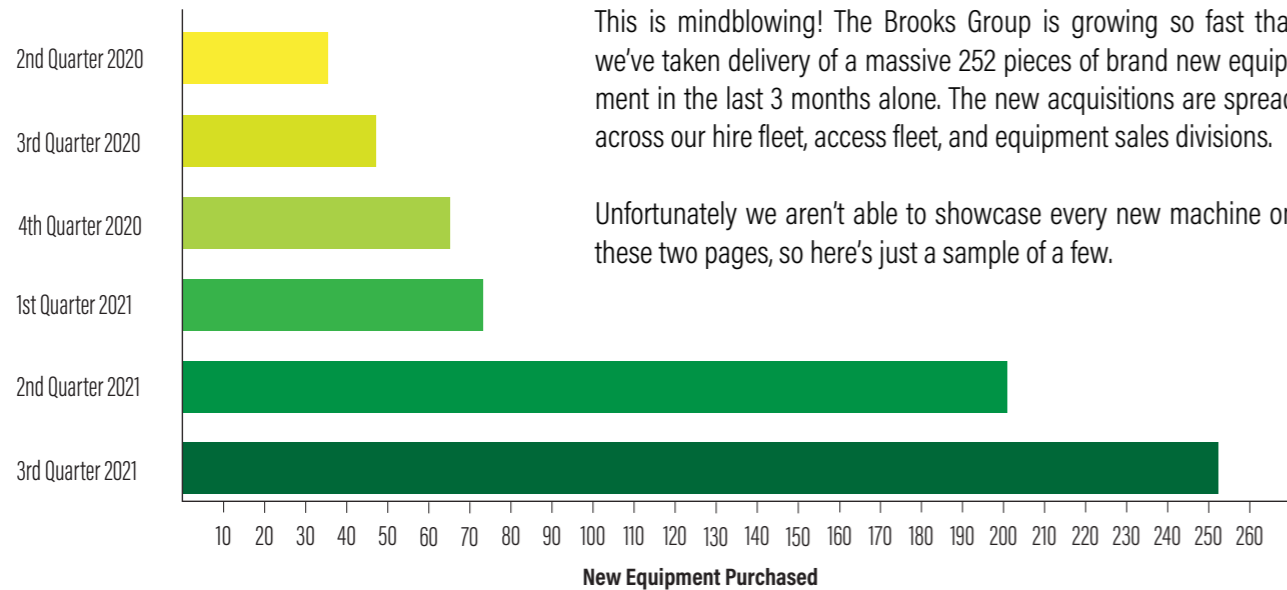
This year all Brooks branches took part in the RSPCA Cupcake Day to raise funds and awareness for animals in need. All of our staff were treated to cupcakes and a few lucky doggos (and Cocky) got to come into work. So far Brooks Hire has raised \$1224.00 for the cause.

If you'd like to donate, please visit <https://www.rspcacupcakeday.com.au/fundraisers/brookshire>



New Machines

The Brooks Hire Fleet



This is mindblowing! The Brooks Group is growing so fast that we've taken delivery of a massive 252 pieces of brand new equipment in the last 3 months alone. The new acquisitions are spread across our hire fleet, access fleet, and equipment sales divisions.

Unfortunately we aren't able to showcase every new machine on these two pages, so here's just a sample of a few.



◀ Komatsu Loaders

Our most popular brand of Loader! We had 4 x WA320PZ Tool Carriers, and 3 x WA500 Loaders delivered to our Welshpool yard in one day.



◀ Komatsu PC138-US-11

This is one of our most popular models of excavator due to its tight tail swing. This particular machine was delivered to our Sydney branch in July.



Atlas Copco Pumps & Compressors

A range of Atlas Copco de-watering pumps and compressors have been added to the hire fleet ▼



◀ Komatsu Articulated Water Truck

This Komatsu HM400-3M0 has a 33kl capacity tank designed using front and rear walls and baffles, giving superior stiffness and a reduced tank weight. It arrived in June this year and is a part of the Brooks Hire fleet.



◀ Lighting Towers

We've added Chicago Pneumatic Lighting Towers to both our hire fleet and our Sales stock in Perth and Brisbane.



◀ Genie GS-3369 RT Scissor Lift

This 33ft Rough Terrain Scissor Lift is just one of the new elevated work platforms added to the Brooks Access fleet this quarter. It features 4 wheel drive for extra rugged terrain.

Caterpillar CS12 GC Padfoot Rollers

Brooks Hire added two of these GC Series Padfoot Rollers to the Queensland hire fleet.



◀ Caterpillar CS64B Smooth Drum Rollers

These brand new Cat CS64B Smooth Drum Rollers were also added to the hire fleet in Western Australia.



◀ Sany SY215C Long Reach Excavator

Brooks Hire customised this 22 tonne excavator with a long reach boom. It is a part of the WA hire fleet.

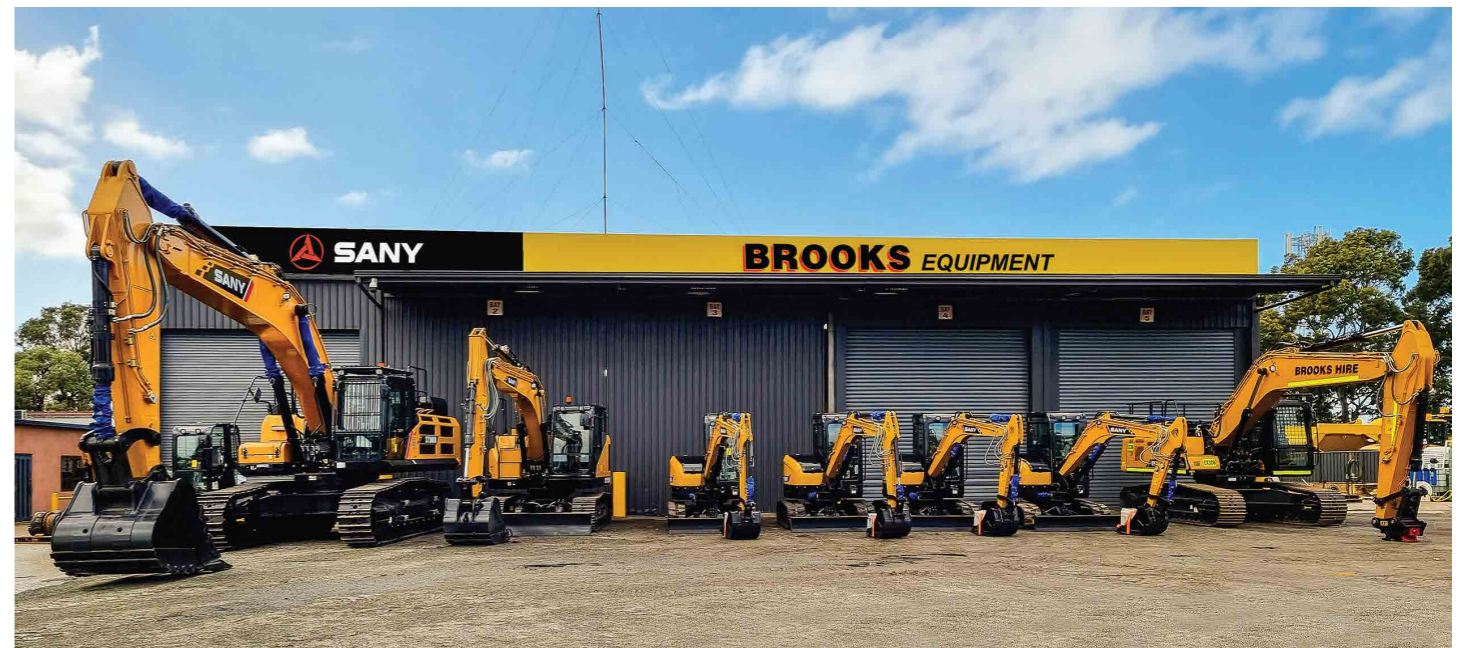
SANY EXCAVATORS

This quarter, Brooks has taken delivery of 18 Sany excavators. We have all sizes from 1.6 tonne mini excavators, right up to 54.5 tonne machines. Some of these excavators will be for sale through Brooks Equipment, whilst others have been distributed through our hire fleet.



◀ Genmac Queen & Strong Generators

This line up of Genmac industrial sized generators are just some of the new stock that has arrived.



Sany & Brooks Join Forces



SANY The making of a dealership.

After more than a year in the making, Brooks Equipment are pleased to announce our appointment as authorised dealers for Sany in Western Australia.

The relationship began back in April 2020, when Sany BDM, George Fang arrived at Perth airport and immediately called Stuart Brooks, Managing Director of the Brooks Group, to discuss opportunities for Sany excavators in the WA market.

With over 40 years of experience in earthmoving equipment, and the largest fleet of excavators in Australia, Brooks was an obvious first choice for Sany. This initial contact led to Sany offering Brooks Hire three excavators to trial within our hire fleet.

In November 2020, Brooks Hire took delivery of our first shipment of trial Sany Excavators, a 5.3 tonne SY50U model, a 13.5 tonne SY135U model, and a 36.2 tonne SY365H model excavator. All three machines were sent out to clients in all areas of Western Australia.

At the same time Brooks Hire were trialling Sany excavators in our hire fleet, the Brooks Group were busy establishing an equipment sales division, specialising in the sale of new and used earthmoving equipment. With quality brands such as Husqvarna, Italdem, Genmac, CompAir, Chicago Pneumatic, and Euromacchine already on board, Brooks Equipment floated the possibility of also becoming authorised dealers for Sany.

"We wanted to offer our customers an opportunity to buy first rate equipment at very competitive prices," said Brooks Equipment General Manager, Nathan Fenemer. "Having the opportunity to work with a global leader in construction equipment manufacturing is a privilege and we look forward to showing our customers the incredible value this partnership will deliver them."

The Brooks Group carried out rigorous trials in the north west of WA to test the machinery ourselves. "The equipment excelled in every aspect," said Fenemer. "We were really impressed by the reliability of the excavators, a key priority for us in WA."

"Every model that we tested did not miss a beat in over 12 months of hard work," Nathan went on to explain.

"We know and trust this product and have first hand experience that we can share with our customers."

Nathan Fenemer - General Manager, Brooks Equipment

Following a long road of equipment tests, trials, and assessments, Brooks Equipment were very satisfied that Sany could provide a quality product that meets and exceeds the Australian standards that our customers require.

The Brooks team worked hard to develop an impressive proposal, and through a series of negotiations, Brooks Equipment was appointed the Sany Dealership for Western Australia. We have already taken delivery of all Sany excavator models including several 54.5 tonne SY500H excavators that are being fitted with mine specifications such as auto grease, fire suppression, and Top Con 3D GPS to meet the requirements of the market. We have also customised a SY215C model with a long reach boom which is already working in the Pilbara region of WA.

All Sany excavators purchased through Brooks Equipment will come with optional upgrades, access to genuine parts, a service guarantee, and finance options including 'rent to buy'.

Brooks Equipment's head office is located on the corner of Orrong Road and Murray Road North in Welshpool, Perth. Sany equipment can be purchased from any of our WA branches including Canning Vale, Bunbury, Albany, Kalgoorlie, Port Hedland, Newman, and Karratha. Our other construction equipment can be purchased all over Australia from any of our 18 nationwide branches.

BROOKS
EQUIPMENT

 **SANY**

SANY DEALERSHIP TIMELINE

APRIL 2020

Sany Business Development Manager, George Fang arrives in Perth and reaches out to Brooks Group Managing Director, Stuart Brooks.

NOVEMBER 2020

Brooks Hire take delivery of three trial SANY excavators.



JANUARY 2021

Brooks Equipment purchase a 16 tonne SY115U Excavator. Sany agree to provide a Loader for Brooks Hire to trial.

APRIL 2021

Brooks Equipment move into our new premises in Welshpool.



JUNE 2021

Brooks Equipment develop a business plan and make a formal proposal to Sany.

JUNE 2020

Brooks & Sany sign a trial agreement for 3 excavators.



DECEMBER 2020

A Sany Dealership is discussed.



MARCH 2021

Sany GM, Nitin Khanna flies to Perth to meet Brooks Group CEO Doug Brooks. A formal enquiry for Dealership is made.



MAY 2021

The Sany Service team visit our new Welshpool headquarters and other WA branches.

JULY 2021

A formal Dealership agreement is offered to Brooks Equipment.



World's No.1 Selling Excavator



BROOKS ACCESS NEWS

On the Up & Up



Sany SY16C 1.75t Mini Excavator POA

Powered by a 11.2Kw Yanmar Engine, this excavator is designed to be agile, whilst still offering powerful excavation force.

Technical Specifications

Weight: 1.75 tonnes
Length: 3.64m
Width: 0.98m
Bucket: 0.04m³
Max Dig Depth: 2.36m



Sany SY26U 2.76t Mini Excavator POA

With all the benefits of the SY16C whilst offering the comfort of an enclosed cab.

Technical Specifications

Weight: 2.76 tonnes
Length: 4.28m
Width: 1.55m
Bucket: 0.06m³
Max Dig Depth: 2.82m



Sany SY50U 5.3t Excavator POA

With a Zero Tail swing and independent boom swing the design of this excavator allows for operation in tight spaces.

Technical Specifications

Weight: 5.3 tonnes
Length: 5.39m
Width: 1.96m
Bucket: 0.152m³
Max Dig Depth: 3.24m



Sany SY80U 8.8t Excavator POA

The compact design, powered by a 18.2KW Yanmar makes this the perfect all rounder for small to medium earthworks.

Technical Specifications

Weight: 8.8 tonnes
Length: 6.5m
Width: 2.22m
Bucket: 0.28m³
Max Dig Depth: 4.535m



Sany SY135C 15.1t Excavator POA

The 73Kw Isuzu engine gives this excavator high productivity, reliability, and easy operator maintenance.

Technical Specifications

Weight: 15.1 tonnes
Length: 7.7m
Width: 2.59m
Bucket: 0.6m³
Max Dig Depth: 5.5m



Sany SY155W 15t Excavator POA

Four wheel drive, large ground clearance, excellent off road capability.

Technical Specifications

Weight: 15 tonnes
Length: 8m
Width: 2.6m
Bucket: 0.93m³
Max Dig Depth: 5.4m



Sany SY215C 22.6t Excavator POA

Advanced computer dynamic control technology. Innovative controller for more accuracy.

Technical Specifications

Weight: 22.6 tonnes
Length: 9.7m
Width: 2.98m
Bucket: 0.93m³
Max Dig Depth: 6.6m

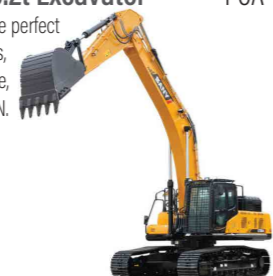


Sany SY365H 36.2t Excavator POA

The durable SY365H is the perfect tool for mining operations, with a 212kw Isuzu engine, and bucket force of 235kN.

Technical Specifications

Weight: 36.2 tonnes
Length: 9.72m
Width: 3.08m
Bucket: 1.5m³
Max Dig Depth: 7.33m



Sany SY500H 54.5t Excavator POA

A 298kW Cummins engine lies at the heart of this mining King, providing superior productivity.

Technical Specifications

Weight: 54.5 tonnes
Length: 12.19m
Width: 3.64m
Bucket: 5m³
Max Dig Depth: 7.7m



Brooks Access, the newest division of the Brooks Group has been gaining momentum since its introduction at the beginning of 2021. Focusing on elevated work platforms, telehandlers, and forklifts, Brooks Access has now accumulated over 40 new machines in the access fleet.

"It's been fantastic to see how quickly Brooks Access has started to gain momentum and become a known name in the access world," said Brooks Access General Manager, Claire Harrison.

The most impressive new addition to the fleet would have to be the Genie ZX135-70 Articulated Boom. Stretching a massive 135ft into the air, it can certainly reach high places. It is pictured above with our other new giant, the JLG 1250 AJP which can get you from the ground to 125ft in just 95 seconds.

The new access equipment has already started being delivered to our Australia wide branches. Brisbane was the first to receive a 16t Kalmar CDG160 Forklift. Darwin branch will be the next to receive new machines. "The first of Darwin's access equipment should be at the branch before this magazine goes to print," said Claire. "We will have access equipment in all branches by November this year."

Brooks Access already has new stock arriving every day. We strongly encourage customers to get on the phone and let us know what you need so that we can book it in for you.



BROOKS
EQUIPMENT



☎ 1300 BROOKS (276 657)
@ sales@brooksequipment.com.au
🌐 www.brooksequipment.com.au



Spotlight On - Omar Baytie

Celebrating 10 years at Brooks!

This month we are celebrating Omar Baytie's 10 year anniversary working for Brooks. Omar started as an apprentice Heavy Duty Diesel Mechanic in 2011. He is heaps of fun to have in the workplace and is always good for a laugh. We asked Omar about some of the funny experiences he has had at Brooks. "I probably shouldn't say on record," he replied. One of the things Omar is known for, is playing with the cocky in his break. His favourite part of working with Brooks? The staff social outings of course! Thanks for being such a champion in the workplace Omar. We are glad to have you on board and look forward to another 10 years of your antics.



What was your first job: Working at my Dad's kebab shop.

What is your role at Brooks: HD Diesel Mechanic - Perth Occasional fill in Workshop Supervisor up North.

What achievement in life are you most proud of: Surviving 10 years at Brooks!

How would you describe yourself in 3 words: Funny, Energetic, Hardworking.

Where would we find you on the weekends: Still at Brooks.

What is something that you're really good at: Recievals, turn around and dispatch.

What is something that you're really bad at: I'm not really bad at anything.

If you could invite anybody to dinner (dead or alive), who would it be: Mark McGowan, he seems pretty funny. I'd have dinner with him.

You're going to a Super Hero party, who do you dress up as: Captain Jack Sparrow.

Favourite type of cake: Mudcake.

What song best sums up your life: What About Me? by Shannon Noll.



Welcome Aboard



Angelo Francesca

What was your first job: Mowing the neighbour's lawns with my Dad's lawnmower.

What is your role at Brooks: Sany Sales Representative - Perth, WA.

What achievement in life are you most proud of: Helping people in need.

How would you describe yourself in 3 words: Compassionate, Honest, and Loyal.

Where would we find you on the weekends: Socialising with family and friends.

What is something that you're really good at: Entertaining.

What is something that you're really bad at: Playing Golf.

If you could invite anybody to dinner (dead or alive), who would it be: Daniel Craig.

You're going to a Super Hero party, who do you dress up as: Batman.

Favourite type of cake: Apple Pie.

What song best sums up your life: Born To Be Wild.

Welcome Aboard

Amy Chang

What was your first job: Counter-hand at an eatery in Freo Markets.

What is your role at Brooks: Accounts Administration Assistant - Perth, WA.

What achievement in life are you most proud of: Buying a house, getting married to my husband and raising my twins.

How would you describe yourself in 3 words: Positive, Friendly, Reliable.

Where would we find you on the weekends: With the twins and family.

What is something that you're really good at: Being organised.

What is something that you're really bad at: Remembering people's names.

If you could invite anybody to dinner (dead or alive), who would it be: My mum who passed away last year.

You're going to a Super Hero party, who do you dress up as: Jean Grey (from X-men).

Favourite type of cake: Pavlova

What song best sums up your life: Across the Universe by the Beatles



Ashlea Hendrie

What was your first job: Checkout at Coles.

What is your role at Brooks: Hire Coordinator for Brooks Access - Perth, WA.

What achievement in life are you most proud of: Buying my house by myself at 29.

How would you describe yourself in 3 words: Friendly, Honest, Caring.

Where would we find you on the weekends: Chilling at home or out with friends.

What is something that you're really good at: I have a great memory for random facts.

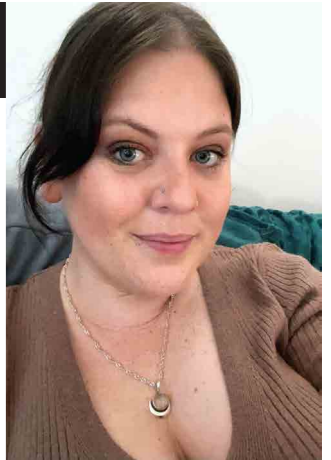
What is something that you're really bad at: Singing.

If you could invite anybody to dinner (dead or alive), who would it be: Henry Cavill.

You're going to a Super Hero party, who do you dress up as: Wonder Woman.

Favourite type of cake: Chocolate Mousse Gateau.

What song best sums up your life: Treat Myself - Meghan Trainor.



Richard Wozniak

What was your first job: Driveway Attendant at a service station.

What is your role at Brooks: Sales Representative - Adelaide, SA.

What achievement in life are you most proud of: Having the opportunity to explore and see all of Australia by helicopter.

How would you describe yourself in 3 words: Articulate, focused and ambitious.

Where would we find you on the weekends: Anywhere that has live music playing.



What is something that you're really good at: Being creative.

What is something that you're really bad at: Standing in a long queue.

If you could invite anybody to dinner (dead or alive), who would it be: Robin Williams.

You're going to a Super Hero party, who do you dress up as: Superman.

Favourite type of cake: Coffee.

What song best sums up your life: With some of the crazy things I've done, "Alive" by Pearl Jam



Samuel Hewat

What was your first job: Farmwork.

What is your role at Brooks:
Heavy Duty Diesel Mechanic - Mackay, QLD.

What achievement in life are you most proud of: Mentoring apprentices throughout their apprenticeships.

How would you describe yourself in 3 words: Sporty, Adventurous, Friendly.

Where would we find you on the weekends:
Hunting, Fishing, Golf.

What is something that you're really good at: Making something out of nothing.

What is something that you're really bad at: Singing.

If you could invite anybody to dinner (dead or alive), who would it be: Grandparents.

You're going to a Super Hero party, who do you dress up as: Deadpool.

Favourite type of cake: Chocolate Mud Cake.

What song best sums up your life:
Young by Kenny Chesney

Steve Nankivell



What was your first job:
Working on the farm (kid slave labour - but we loved it!)

What is your role at Brooks:
Heavy Duty Mechanic - Perth WA.

What achievement in life are you most proud of: Interesting - probably still being here to tell the tale.

How would you describe yourself in 3 words:
Inquisitive, Interested, Observant.

Where would we find you on the weekends:
I will be pulling weeds with all of this rain.

What is something that you're really good at: As a kid, pulling things to bits and being able to re-assemble them.

What is something that you're really bad at: Dishes, cleaning etc. - house work in general.

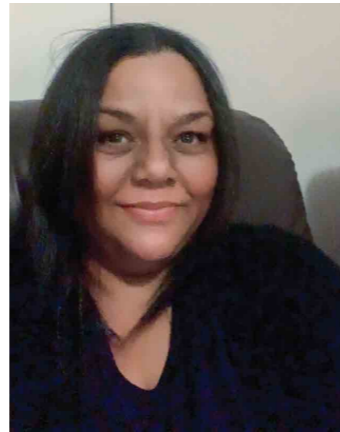
If you could invite anybody to dinner (dead or alive), who would it be: Both my Great Aunts - Frankie and Daph.

You're going to a Super Hero party, who do you dress up as:
The one with the lightning bolt to match my song.

Favourite type of cake: Real mechanics don't (need to) eat cake.

What song best sums up your life:
Probably ACDC - Thunderstruck (don't know why).

Janine Kinnear



What was your first job:
Receptionist.

What is your role at Brooks:
Accounts Receivable Officer - Perth, WA.

What achievement in life are you most proud of:
Having my son.

How would you describe yourself in 3 words: Happy, Easy going, reliable.

Where would we find you on the weekends: Outdoors somewhere with Hubby entertaining our son or hanging with the family.

What is something that you're really good at: Winning an argument with my Hubby lol.

What is something that you're really bad at: Singing.

If you could invite anybody to dinner (dead or alive), who would it be: Kevin Hart and Dwayne 'The Rock' Johnson.

You're going to a Super Hero party, who do you dress up as:
Black Widow.

Favourite type of cake: Anything goes, I love cake :)

What song best sums up your life:
I'm Blessed by Charlie Wilson.

Peta Barnes



What was your first job:
Working for Target.

What is your role at Brooks Hire: HR Manager - Perth WA.

What achievement in life are you most proud of:
I think I'm supposed to say my kids, which I am, but also my amazing family.

How would you describe yourself in 3 words:
Loud, I laugh a lot, Integrity.

Where would we find you on the weekends: In the kitchen.

What is something that you're really good at: Talking.

What is something that you're really bad at: Exercise.

If you could invite anybody to dinner (dead or alive), who would it be: Richard Fidler, Stephen Fry, Abraham Lincoln, Benjamin Franklin.

You're going to a Super Hero party, who do you dress up as:
Damage Control.

Favourite type of cake: Lemon Tart.

What song best sums up your life: Solsbury Hill.

Khai Ming Teuh



What was your first job:
Kitchen Hand at a fast food restaurant.

What is your role at Brooks Hire: Accounts Assistant - Perth WA.

What achievement in life are you most proud of: Found my passion in accounting and finance.

How would you describe yourself in 3 words:
Cheerful, Easy going, Optimistic.

Where would we find you on the weekends: Sports venues.

What is something that you're really good at: Smiling.

What is something that you're really bad at:
Swimming & singing.

If you could invite anybody to dinner (dead or alive), who would it be: Kobe Bryant.

You're going to a Super Hero party, who do you dress up as:
Iron Man.

Favourite type of cake: Earl Grey Tea Cake.

What song best sums up your life:
That's The Way It Is by Celine Dion.



Reece Weadley

What was your first job:
Bricklayer Apprentice.

What is your role at Brooks Hire:
Float Driver - Perth WA.

How would you describe yourself in 3 words: Friendly, Chilled, Polite.

Where would we find you on the weekends:
Working, or watching the footy.

What is something that you're really good at:
Driving Trucks.

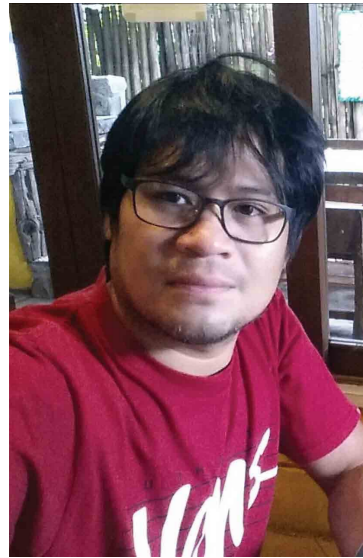
What is something that you're really bad at: Golf.

If you could invite anybody to dinner (dead or alive), who would it be: John Lennon.

You're going to a Super Hero party, who do you dress up as: Spiderman.

Favourite type of cake: Raspberry Cheesecake.

What song best sums up your life:
Long Black Road by Slim Dusty.



Alexis Panambo

What was your first job: Supermarket Bagger.

What is your role at Brooks:
Heavy Diesel Mechanic - Newman WA.

What achievement in life are you most proud of: Achieving my dream job and being able to support and provide a better life to my parents, siblings and my own family.

Where would we find you on the weekends:
I spend my weekend at home most of the time, playing with my daughter and doing household chores.

How would you describe yourself in 3 words: Assertive, hard working, optimistic.

What is something that you're really good at: Computer Games - Basketball.

What is something that you're really bad at: Technical Writing.

If you could invite anybody to dinner (dead or alive), who would it be: My parents.

You're going to a Super Hero party, who do you dress up as: Thor.

Favourite type of cake: Cheesecake.

What song best sums up your life:
I'm Still Here by Vertical Horizon.

Steven Tran

What was your first job:
Cinemas at Morley.

What is your role at Brooks:
Parts Interpreter - Perth WA.

What achievement in life are you most proud of: Passing my automatic license.

How would you describe yourself:
Can't drive manual.

Where would we find you on the weekends: Sleeping.

What is something that you're really good at: Basketball.

What is something that you're really bad at: Maths.

If you could invite anybody to dinner (dead or alive), who would it be: Jack Eyo.

You're going to a Super Hero party, who do you dress up as:
Nigel Thornberry.

Favourite type of cake: Woolworths Cake the best.

What song best sums up your life: Imagine Dragon.



Teay Thongngam

What was your first job:
Maccas (drive-thru chick).

What is your role at Brooks: A little bit of everything mainly accounts receivable - Perth WA.

What achievement in life are you most proud of: Not passing out after 3 shots but also becoming independent at a young age.

How would you describe yourself in 3 words:
Tequila, Independent & Moody (lol).

Where would we find you on the weekends: Butterfly 73.

What is something that you're really good at:
Cooking / Baking / Eating.

What is something that you're really bad at: Maths ughh.

If you could invite anybody to dinner (dead or alive), who would it be: Steven Tran / Jack Eyo - they can paper, scissors, rock.

You're going to a Super Hero party, who do you dress up as:
Hands down Batman.

Favourite type of cake: Chocolate Mudcake or Sponge Cake Fruit.

What song best sums up your life: No clue.



Kirsten Swenson

What was your first job:
Office Junior - Oldershaw & Co Chartered Accountants.

What is your role at Brooks:
Sales Coordinator for Brooks Equipment - Perth WA.

What achievement in life are you most proud of:
My four daughters.

How would you describe yourself in 3 words:
Friendly, confident, Hard-working.

Where would we find you on the weekends: At netball.

What is something that you're really good at: Cooking.

What is something that you're really bad at: Doing the dishes.

If you could invite anybody to dinner (dead or alive), who would it be: Donald Trump.

You're going to a Super Hero party, who do you dress up as:
Wonder Woman.

Favourite type of cake: Carrot Cake.

What song best sums up your life: Who You Are by Jessie Jay.



Chito Baldoria

What was your first job:
Working for a company called 'Fire Services' which was service and maintain fire sprinklers systems.

What is your role at Brooks:
Detailer - Sydney NSW.

What achievement in life are you most proud of:
My 3 sons, and now 2 grandkids.

How would you describe yourself in 3 words:
Hard worker, dedicated to my kids, and down to earth.

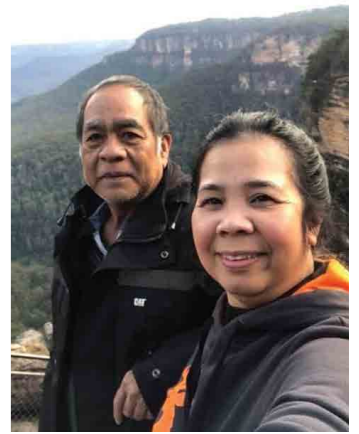
Where would we find you on the weekends:
At my friends, or family farm.

What is something that you're really good at:
Labour work, working with my hands.

What is something that you're really bad at:
My English is not the best.

If you could invite anybody to dinner (dead or alive), who would it be: Anyone who wants to have a drink.

Favourite type of cake: Chocolate Cake.



Vinny's Kitchen

Chinese Braised Rice With Chicken



Ingredients A
3 x Cups of Rice Grains
2 x Boneless Chicken Marylands
3 x Chinese Sausages - sliced
1 x Cup of Diced Green Beans
1 x Cup of Corn Kernels
1 x Cup of Diced Potato
1 x Cup of Diced Carrot
5 x Diced Shitake Mushrooms
2 Tbs Oil
2 Tbs of Sesame Oil

Ingredients B - Marinade
2 Tbs of Rice Wine
1 Tbs of Dark Soy Sauce
1 Tsp of Sugar
Ginger - sliced into strips
Salt and Black Pepper
Ingredients C
1 Tbs of Oyster Sauce
2 Tbs of Soy Sauce
1/2 Tbs Five Spice Powder
3 Cups of Water

Garnish - Sliced Spring Onion, Sliced Chilli & Fried Shallots

Method

1. Dice chicken thighs into cubes and marinate in rice wine, sugar, dark soy sauce, ginger, and 1 Tbs of salt. Set aside for 10 minutes.
2. Wash and drain the rice grains and place inside the rice cooker. Don't start cooking the rice yet.
3. Heat oil and sesame oil in a large frypan and stir fry the marinated chicken thighs until they turn brown. Add beans, corn, potato, carrot, and mushroom. Continue to stir fry for another 2 minutes.
4. Place the chicken and vegetables on the rice. Add the oyster sauce, soy sauce, five spice powder, water 1 Tbs of salt. Mix evenly and cover with lid.
5. Turn on the rice cooker and wait until it clicks off.
6. Pan fry the sliced sausage and add them to the rice, mix well, cover and stand for 5 minutes.
7. Season with salt & pepper to taste. Garnish with spring onions, chilli, and fried shallots if desired.

The Puzzler Page

Spot the Difference

There are 10 differences between the photos below. See if you can find them all.



Word Solver

Find the 9 letter word using the letters in the grid, then try to make as many other words as you can. Words must be a minimum of 4 letters and must contain the middle letter. No proper nouns or plurals.
Good - 10 Words **Very Good** - 15 Words **Excellent** - 25 or more

R	P	R
L	E	P
O	E	L



Crossword

Across

- 1. Intelligent
- 6. Strike-breaker
- 10. Repeat
- 14. Tardier
- 15. Handbag
- 16. Gradual
- 17. Unsuitable for surgery
- 19. Coastal bird
- 20. Poorly lit
- 21. Heavenly scales
- 22. Broadway lights
- 23. Painters' stands
- 25. In dreamland
- 27. Similar to
- 29. Fleet
- 32. Track shapes
- 35. _____ acid
- 38. Weight measure
- 39. Skin opening
- 40. School division
- 41. Small bird
- 42. Had breakfast
- 43. Type of bean
- 44. Chicago's airport
- 45. President, e.g.
- 47. Canter
- 49. Basement
- 52. Narrate again
- 56. Airborne
- 58. Aired again
- 60. Struggle
- 61. Faction
- 62. Slow down
- 64. Drifting
- 65. Burden
- 66. Winona _____ of "Little Women"
- 67. Bygone
- 68. Small pastry
- 69. Clairvoyants

Down

- 1. Glide
- 2. Excessive excitement
- 3. Small particles
- 4. GOP member
- 5. Vine support
- 6. Wild attempt
- 7. Venomous snake
- 8. Book of maps
- 9. Honey producer
- 10. Self-_____
- 11. Ancient Egyptian queen
- 12. Car beeper
- 13. Has
- 18. Dare
- 22. Fiddling emperor
- 24. She, in Bordeaux
- 26. Path
- 28. Deserve
- 30. Go-getter
- 31. Novelist _____ Rice
- 32. Semiprecious stone
- 33. Ballot
- 34. Phone number prefixes (2 wds.)
- 36. Wrestler's pad
- 37. False god
- 40. Female
- 41. Sharpen
- 43. Hide
- 44. Can _____ (kitchen devices)
- 46. Conquer
- 48. Aloud
- 50. Hockey venue
- 51. Happen again
- 53. Escape
- 54. Liquid measure
- 55. Ogles
- 56. PDQ's kin
- 57. _____ Kudrow of "Friends"
- 59. Breather
- 62. Speck
- 63. Bread choice

1	2	3	4	5	6	7	8	9	10	11	12	13	
14					15				16				
17					18				19				
20				21				22					
23			24			25		26					
			27			28	29	29			30	31	
32	33	34				35	36	37			38		
39					40					41			
42				43					44				
45			46				47	48					
		49				50	51		52		53	54	55
56	57					58	59				60		
61						62					63		
64						65				66			
67						68				69			

Sudoku

Enter numbers into the blank spaces so that each row, column and 3x3 box contains the numbers 1 to 9 without repeats.

			4			7	8	
			7			4	2	9
3	7				8		6	1
		1					8	
6				3	1	2	5	7
				4				3
	1			9				
				5		8		
		3		8	4			6



Brain Teaser

Who took what where? See if you can work out which driver, took which machine on which truck to where....

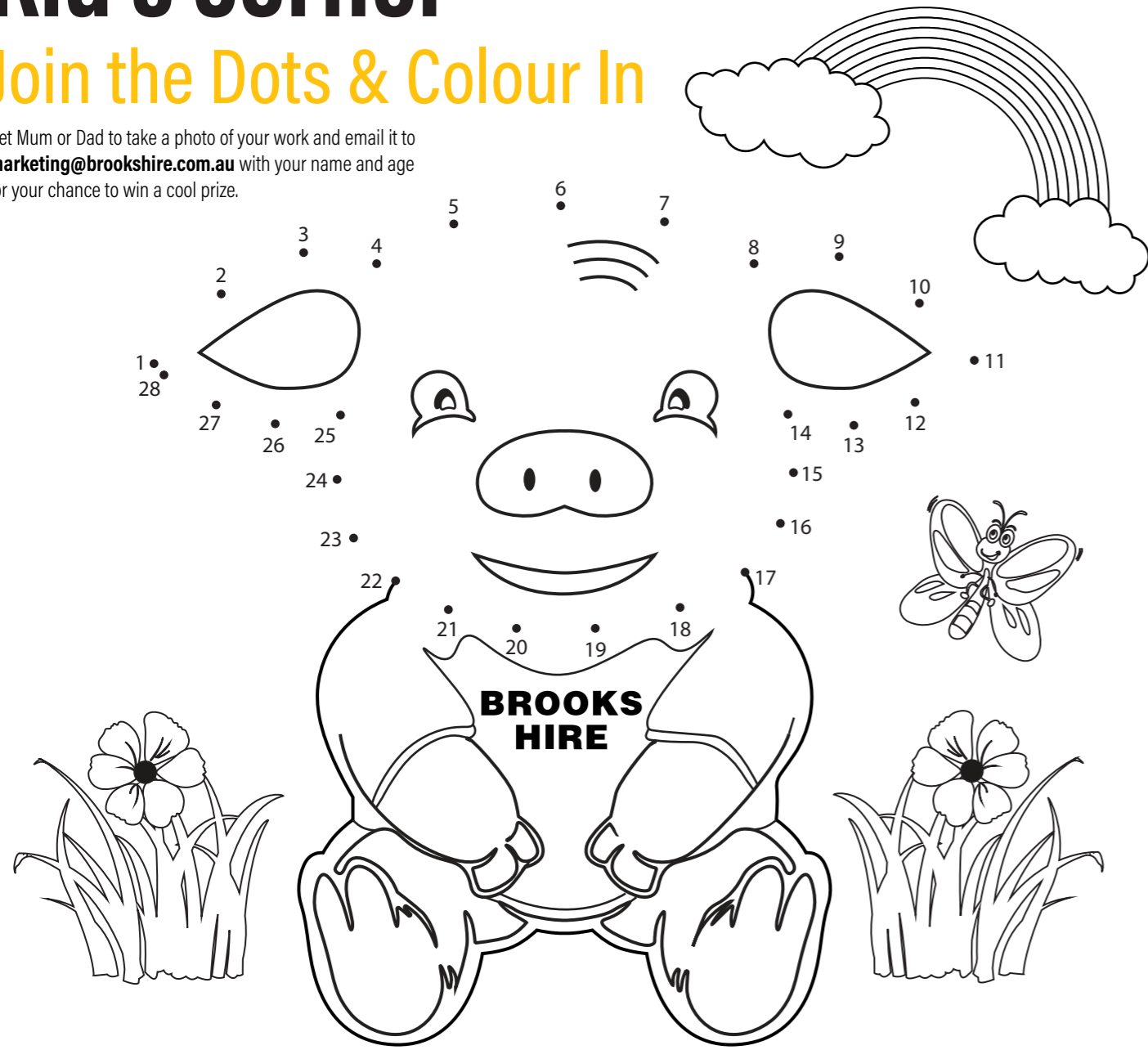
- The Scania is picking up the grader but isn't going to Goldfields.
- Greg is hauling an Excavator but he isn't going to Newman.
- Stuart isn't hauling a loader, nor is he going to Goldfields.
- The truck carrying a loader, which isn't the Volvo, is going to Albany.

	Driver	Machine	Destination
	Greg	Jon	Stuart
	Excavator	Loader	Grader
	Newman	Goldfields	Albany
Truck	Scania		
	Volvo		
	Freightliner		
Destination	Newman		
	Goldfields		
	Albany		
Machine	Excavator		
	Loader		
	Grader		
Truck	Driver	Machine	Destination
Scania			
Volvo			
Freightliner			

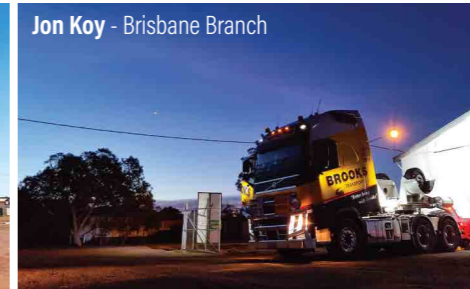
Kid's Corner

Join the Dots & Colour In

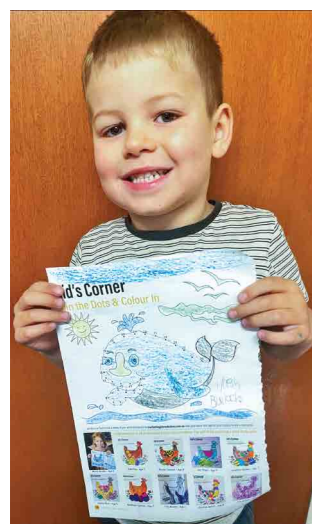
Get Mum or Dad to take a photo of your work and email it to marketing@brookshire.com.au with your name and age for your chance to win a cool prize.



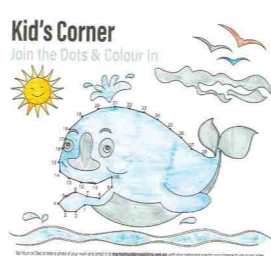
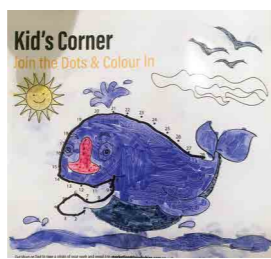
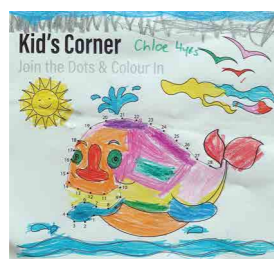
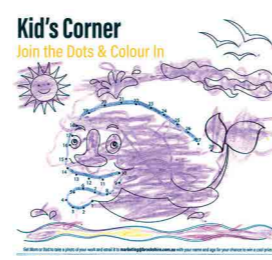
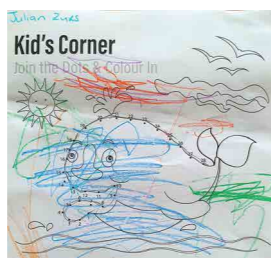
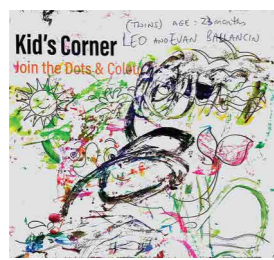
Snap That Staff photography competition



Brooks staff members can enter the photo competition by emailing a high resolution copy of your photograph to marketing@brookshire.com.au



Hugh Bullock



Congratulations to all of our winners from our last edition. You will all be receiving a prize in the post.

Equipment Hire List



Front End Loaders

CATEGORY	MAKE	MODEL	ENGINE	WEIGHT
1.5m ³	Komatsu	WA150	74 kW 99 HP @ 2000 rpm	7.5 Tonne
2.1m ³	Caterpillar	930K	110 kW @ 1600 rpm	13 Tonne
2.5m ³	Komatsu	WA250	124 kW 166 HP @ 2000 rpm	14 Tonne
3.1m ³	Komatsu	WA320	124 kW 166 HP @ 2000 rpm	14 Tonne
3.5m ³	Komatsu	WA380	140 kW 187 HP @ 2000 rpm	16 Tonne
3.75m ³ - 4m ³	Komatsu	WA430	173 kW / 232 HP @ 2.100 rpm	18 Tonne
3.4m ³	Caterpillar	950M	187 kW 250 HP	20 Tonne
3.6m ³	Caterpillar	962M	185 kW 248 HP	20 Tonne
4m ³ - 5m ³	Komatsu	WA470	204 kW / 274 HP @ 2.000 rpm	23 Tonne
5m ³	Komatsu	WA480	223 kW / 299 HP	25 Tonne
4m ³ - 5m ³	Volvo	L150G	210 kW / 1400 rpm	25 Tonne
4.7m ³ - 6.4m ³	Komatsu	WA500	266 kW / 357 HP @ 1900 rpm	32 Tonne
5.6m ³	Caterpillar	980M	278 kW	30 Tonne
5.6m ³	Caterpillar	982M	278 kW @ 1800 rpm	35 Tonne
5.6m ³	Hitachi	ZW370	289kW @ 1800 rpm	35 Tonne
6.4m ³	Caterpillar	988K	403 kW	51 Tonne
6.4m ³	Komatsu	WA600	395 kW / 529 HP @ 1800 rpm	55 Tonne
7m ³	Volvo	L260H	309 kW / 420 HP	34 Tonne
13m ³	Komatsu	WA900	638 kW / 856 HP	107 Tonne



Tool Carriers

CATEGORY	MAKE	MODEL	ENGINE	WEIGHT
2.2m ³ - 2.3m ³	Komatsu	WA250PT	104 kW 140 HP / 2000 rpm	10 Tonne
2.2m ³ - 2.3m ³	Komatsu	WA250PZ	103 kW 138 HP @ 2000 rpm	12 Tonne
1.9m ³ - 2.7m ³	Komatsu	WA270	111 kW 149 HP @ 2000 rpm	13 Tonne
2.5m ³ - 2.7m ³	Komatsu	WA320-8	123 kW/165 HP @ 2100 rpm	15 Tonne
2.5m ³ - 2.7m ³	Komatsu	WA320PZ-6	125 kW / 167 HP	15 Tonne
2.5m ³ - 2.7m ³	Volvo	L90F	129 kW @ 1700 rpm	16 Tonne
3m ³	Volvo	L110F	170 kW @ 1700 rpm	19 Tonne
3.1m ³	Hitachi	ZW180-5	126 kW @ 1500 rpm	14.5 Tonne
3.5m ³	Volvo	L120F	180 kW @ 1700 rpm	20 Tonne
4.2m ³	Volvo	L150F	209 kW @ 1400 rpm	23 Tonne
4.4m ³	Volvo	L180F	234 kW @ 1400 rpm	26.6 Tonne
5.2m ³	Volvo	L220H	279 kW 379 HP @ 1400 rpm	32.8 Tonne



Excavators

CATEGORY	MAKE	MODEL	ENGINE	BUCKET CAPACITY
1.5 Tonne	Komatsu	PC14R	11,6 kW / 15,6 HP @ 2.600 rpm	0.03m ³
1.75 Tonne	Sany	SY16C	14.6 kW @ 2400 rpm	0.04m ³
1.8 Tonne	Caterpillar	301.8	16.1kW / 19.2 HP @ 2,400 rpm	0.033m ³
1.85 Tonne	Sany	SY18C	14.6 kW @ 2400 rpm	0.04m ³
2.26 Tonne	Caterpillar	302	15.7kW / 21 HP @ 2,400 rpm	0.054m ³
2.76 Tonne	Sany	SY26U	14.6 kW @ 2400 rpm	0.06m ³
3 Tonne	Komatsu	PC30MR	22,0 kW / 29,5 HP @ 2.400 rpm	0.09m ³
3 Tonne	Hitachi	ZX33	21.2 kW (28.4 HP)	0.09m ³
3.85 Tonne	Sany	SY35U	18.2 kW @ 2400 rpm	0.12m ³
5 Tonne	Komatsu	PC55MR	29.1 kW 39 HP/2400 rpm	0.15m ³
5 Tonne	Komatsu	PC45MR	29.1 kW 39 HP/2400 rpm	0.15m ³
5 Tonne	Komatsu	PC40MR	29.4 kW 39.4 HP/2350 rpm	0.15m ³
5.3 Tonne	Sany	SY50U	29.1 kW @ 2400 rpm	0.15m ³
6.1 Tonne	Sany	SY60C	42.4 kW / 56.9 HP	0.21m ³
7.28 Tonne	Sany	SY75C	43 kW / 57.7 HP	0.28m ³
8 Tonne	Komatsu	PC78MR	40,5 kW / 54 HP @ 1.850 rpm	0.28m ³
8.5 Tonne	Komatsu	PC88MR	50.7 kW 68 HP @ 1950 rpm	0.34m ³
8.8 Tonne	Sany	SY80U	53.7 kW @ 2100 rpm	0.28m ³
9 Tonne	Caterpillar	308CR	52.4kW / 70.3 HP @ 2,200 rpm	0.23m ³
9.1 Tonne	Sany	SY95C	53.7 kw / 72 HP	0.4m ³
14 Tonne	Komatsu	PC138US	72.1 kW / 96.6 HP @ 2200 rpm	0.53m ³
14 Tonne	Komatsu	PC160LC	90 kW / 121 HP @ 2200 rpm	0.6m ³
14 Tonne	Hyundai	R140LC	84 kW / 113 HP @ 2,100 rpm	0.6m ³
15.1 Tonne	Sany	SY135C	78.5 kW @ 2000 rpm	0.6m ³
16 Tonne	Sany	SY155U	78.5 kw @ 1900 rpm	0.06m ³
16 Tonne	Hitachi	ZX160LC	90.2 kW / 122 HP @ 2,200 rpm	0.73m ³
22 Tonne Zero Swing	Komatsu	PC228US	116 kW 155 HP @ 2000 rpm	1.0m ³
22 Tonne	Caterpillar	320GC	107 kW (143 hp)	1.0m ³
22 Tonne	Caterpillar	320DL	103 kW / 140 HP @ 1800 rpm	1.3m ³
22 Tonne	Hitachi	ZX210H	122 kW (164 HP)	1.00m ³
22 Tonne	Komatsu	PC200LC	110 kW 147 HP / 2000 rpm	1.2m ³
22 Tonne	Komatsu	PC210LCi	118 kW / 158 HP @ 2000 rpm	0.97m ³
22 Tonne	Komatsu	PC210LC	116 kW / 156 HP @ 2000 rpm	1.68m ³
22 Tonne	Komatsu	HB215LC	110 kW / 148 HP @ 2000 rpm	1.36m ³
22.6 Tonne	Sany	SY215C	122 kw @ 2300 rpm	0.93m ³
23 Tonne	Komatsu	PC220LC	110 kW 147 HP / 2000 rpm	1.26m ³
23 Tonne	Hitachi	ZX225USLC	159 hp (118 kW) @ 2,000 rpm	1.09m ³
30 Tonne	Volvo	EC290CLC	153 kW (205 hp)	1.2m ³
30 Tonne	Komatsu	PC270LC	149 kW 200 HP / 2050 rpm	1.25m ³
31.5 Tonne	Sany	SY305H	212 kW @ 2000rpm	1.7m ³
33 Tonne	Hitachi	ZX330	247 HP (180 kW)	1.4m ³
33 Tonne	Hitachi	ZX350H	184 kW (246 HP)	2.00m ³
34 Tonne	Komatsu	PC300LC	194 kW 260 HP / 1950 rpm	1.8m ³
35 Tonne	Hitachi	ZX350LC	202 kW / 271 HP	2.1m ³
36 Tonne	Komatsu	PC360LCi	192 kW / 257 HP @ 1950 rpm	1.96m ³
36 Tonne	Komatsu	PC350LC	194 kW / 260 HP @ 1950 rpm	2.66m ³
36.7 Tonne	Sany	SY365H	205 kW / 275 HP	1.5m ³
37 Tonne	Caterpillar	336	232 kW	2.27m ³
45 Tonne	Komatsu	PC450LC	270 kW / 362 HP @ 1900 rpm	2.8m ³
54.5 Tonne	Sany	SY500H	298 kW / 399.6 HP	2.2m ³
60 Tonne	Komatsu	PC600LC	288 kW 386 HP @ 1800 rpm	3.81m ³
76.2 Tonne	Sany	SY750H	377 kW @ 1800 rpm	4.2m ³
78.6 Tonne	Sany	SY870H	377 kW @ 1800 rpm	5.0m ³
80 Tonne	Komatsu	PC850-8E0SE	370 kW 496 HP / 1800 rpm	4.3m ³
85 Tonne	Komatsu	PC800LC	363 kW 487 HP @ 1800 rpm	4.5m ³
125 Tonne	Sany	SY1250H	567 kW @ 1800 rpm	7m ³



Rollers

CATEGORY	WEIGHT	MAKE	MODEL
Smooth Drum	7 Tonne	Bomag	BW177DH
Smooth Drum	12 Tonne	Bomag	BW211D
Smooth Drum	11 Tonne	Dynapac	CA252D
Smooth Drum	11 Tonne	Bomag	BW212D
Smooth Drum	12 Tonne	Hamm	3412 HT V10
Smooth Drum	12.5 Tonne	Caterpillar	CS56B
Smooth Drum	12.7 Tonne	Dynapac	CA302D
Smooth Drum	13.2 Tonne	Dynapac	CA362D
Smooth Drum	12.6 Tonne	Bomag	BW213D
Smooth Drum	15.7 Tonne	Hamm	3516
Smooth Drum	16 Tonne	Caterpillar	CS74B
Smooth Drum	16.1 Tonne	Bomag	BW216D
Smooth Drum	17.89 Tonne	Hamm	3518
Smooth Drum	18.7 Tonne	Caterpillar	CS78B
Smooth Drum	19.3 Tonne	Dynapac	CA6000D
Smooth Drum	19.8 Tonne	Hamm	3520
Smooth Drum	20 Tonne	Caterpillar	CS79B
Padfoot	12 Tonne	Bomag	BW211D
Padfoot	12.6 Tonne	Bomag	BW213D
Padfoot	13.2 Tonne	Dynapac	CA362D
Padfoot	15.7 Tonne	Hamm	3516P
Padfoot	16.1 Tonne	Bomag	BW216PD
Padfoot	17.6 Tonne	Caterpillar	CP76B
Padfoot	17.89 Tonne	Hamm	3518P
Padfoot	18.6 Tonne	Dynapac	CA602PD
Padfoot	19.4 Tonne	Bomag	BW219PD
Padfoot	19.8 Tonne	Hamm	3520P
Multi Tyre	18 Tonne	Hamm	HP280
Multi Tyre	18.3 Tonne	Hamm	GRW280
Multi Tyre	20 Tonne	Ammann	AP240
Multi Tyre	20 Tonne	Bomag	BW24RH
Multi Tyre	20 Tonne	Bomag	BW25RH
Multi Tyre	24 Tonne	Caterpillar	CW34LRC
Double Drum	2.6 Tonne	Hamm	HD12VV
Double Drum	2.8 Tonne	Bomag	BW120AD
3 Pin Static	14 Tonne	Aveling Barford	DC014
Trench Roller	1,675 Kg	Husqvarna	LP9505



Compactors & Tampers

CATEGORY	WEIGHT	MAKE	MODEL
Tampers	98kg	Husqvarna	LT800
Plate Compactors	185kg	Husqvarna	LG164
Plate Compactors	244kg	Husqvarna	LG204
Plate Compactors	302kg	Husqvarna	LG300
Plate Compactors	436kg	Husqvarna	LG400
Plate Compactors	500kg	Bomag	BPR 70/70D
Plate Compactors	500kg	Dynapac	LG500
Plate Compactors	750kg	Bomag	BPR 100/80
Plate Compactors	750kg	Dynapac	LH700
Plate Compactors	800kg	Husqvarna	LH804



Compressors

All pressure ranges available from 50 cfm to 1050cfm.



Generators

All sizes available from 5 kVA to 2600 kVA.



Diesel Pumps

CATEGORY	Q MAX
Surface Dewatering	All sizes from 45 L/sec to 600 L/sec
High Head	All sizes from 42 L/sec to 408 L/sec



Submersible Pumps

CATEGORY	Q MAX
Dewatering	All sizes from 10 L/sec to 95 L/sec
Sludge	All sizes from 20 L/sec to 155 L/sec
Slurry	All sizes from 15 L/sec to 28 L/sec



Standpipes



Articulated Boom Lifts

HEIGHT	MAKE	MODEL	CATEGORY	PLATFORM CAPACITY
34 ft	JLG	H340AJ	Hybrid	227 kg
34 ft	Genie	Z34 / 22 N	Electric	227 kg
45 ft	JLG	450AJ	Diesel	227 kg
45 ft	Genie	Z-45 XC	Rough Terrain	454 kg
51 ft	Genie	Z-51 / 30J RT	Rough Terrain	227 kg
62 ft	Genie	Z-62 / 40	Rough Terrain	227 kg
80 ft	JLG	H800AJ	Hybrid	227 kg
80 ft	JLG	800 AJ	Diesel	227 kg
80 ft	Haulotte	HA26 RTJ PRO	Diesel	250 kg
80 ft	Genie	Z-80 / 60	Rough Terrain	227 kg
125 ft	JLG	1250AJP	Diesel	230 kg
135 ft	Genie	ZX-135 / 70	Rough Terrain	272 kg



Scissor Lifts

HEIGHT	MAKE	MODEL	CATEGORY	PLATFORM CAPACITY
19 ft	JLG	ES1932	Electric	230 kg
19 ft	JLG	R1932	Electric	230 kg
26 ft	JLG	R2632	Electric	230 kg
26 ft	Genie	GS-2632	Electric	227 kg
26 ft	Genie	GS2669 RT	Rough Terrain	680 kg
32 ft	JLG	ES 3246	Electric	320 kg
32 ft	JLG	R 3246	Electric	320 kg
33 ft	Genie	GS 3369 RT	Rough Terrain	454 kg
33 ft	Genie	GS 3384	Rough Terrain	1,134 kg
33 ft	Snorkel	S3370 RT	Rough Terrain	450 kg
40 ft	JLG	R 4045	Electric	350 kg
40 ft	Genie	GS-4069 RT	Rough Terrain	363 kg
43 ft	Genie	GS-4390	Rough Terrain	680 kg
46 ft	Genie	GS-4655	Electric	350 kg
47 ft	JLG	ERT 4769	Rough Terrain	362 kg
53 ft	Genie	GS-5390	Rough Terrain	680 kg



Telescopic Boom Lifts

HEIGHT	MAKE	MODEL	CATEGORY	PLATFORM CAPACITY
45 ft	Genie	S-45 XC	Rough Terrain	300 kg
65 ft	Genie	S65 XC	Rough Terrain	300 kg
80 ft	Genie	S-80 XC	Rough Terrain	300 kg
85 ft	Genie	S-85XC	Rough Terrain	300 kg
125 ft	Genie	SX-125 XC	Rough Terrain	300kg
135 ft	Genie	SX-135 XC	Rough Terrain	300 kg
150 ft	Genie	SX-150	Rough Terrain	340 kg



Graders

CATEGORY	MAKE	MODEL	ENGINE	WEIGHT
12' Motor Grader	Caterpillar	120M	103 kW / 138 HP @ 2000rpm	14.5 Tonne
12' Motor Grader	Komatsu	GD555	146kW 196 HP @ 2000 rpm	18 Tonne
14' Motor Grader	Caterpillar	140M	136 kW 183 HP	18.4 Tonne
14' Motor Grader	Caterpillar	140M AWD	136 kW 183 HP	18.4 Tonne
14' Motor Grader	Caterpillar	140H	136 kW 183 HP	18.4 Tonne
14' Motor Grader	Caterpillar	140G	136 kW 183 HP	18.4 Tonne
14' Motor Grader	Caterpillar	150 AWD	159 kW 213 HP	19.8 Tonne
14' Motor Grader	Komatsu	GD655	165kW 221 HP @ 2100 rpm	18.5 Tonne
14' Motor Grader	John Deere	770G	190 kW	19.3 Tonne
14' Motor Grader	John Deere	672G	190 kW	20 Tonne
14' Motor Grader	John Deere	772GP	205 kW	20.5 Tonne
16' Motor Grader	John Deere	872GP	224 kW	21.6 Tonne
16' Motor Grader	Caterpillar	16MQLR	217 kW 291 HP	30 Tonne
24' Motor Grader	Caterpillar	24	399-518 kW (535 - 694 HP)	73 Tonne



Dozers

CATEGORY	MAKE	MODEL	ENGINE	FRONT BLADE WIDTH
17.3 Tonne	Caterpillar	D6N	112 kW	4080mm
17.7 Tonne	Caterpillar	D6H	179 HP	4486mm
21 Tonne	Caterpillar	D6T XL	154 kW 207 HP	3693mm
21 Tonne	Caterpillar	D6T LGP	154 kW	3693mm
27 Tonne	Caterpillar	D7	179 kW 240 HP	3988mm
39.4 Tonne	Caterpillar	D8	233 kW 312 HP	5045mm
70 Tonne	Caterpillar	D10T	447/538 kW 600/722HP	7416mm



Dump Trucks

CATEGORY	PAYLOAD	MAKE	MODEL	ENGINE
Site Dumper	9 Tonne	Wacker Neuson	DV90	55.4 kW / 75.3 HP @ 2300rpm
Articulated Dump Truck	30 Tonne	Komatsu	HM300	254 kW 340 HP @ 2000 rpm
Articulated Dump Truck	37 Tonne	Hitachi	AH400D	308 kW 413 HP
Articulated Dump Truck	40 Tonne	Komatsu	HM400	254 kW 340 HP @ 2000 rpm
Articulated Dump Truck	41 Tonne	Caterpillar	745	376 kW 504 HP



Water Trucks

CATEGORY	CAPACITY	MAKE	MODEL	POWER
Rigid	14,000 L	Isuzu	FVZ 260-300	221 kW @ 2,400 rpm
Rigid	14,000 L	Hino	500	280hp/206kW
Rigid	15,000 L	Isuzu	FVZ 260-300	221 kW @ 2,400 rpm
Rigid	15,000 L	Hino	500	280hp/206kW
Rigid	15,000 L	Mercedes Benz	Axor	205 kW/279 hp at 2 300 rpm
Rigid	20,000 L	Isuzu	FYH 2000 8x4	257 kW @ 2,000 rpm
Rigid	20,000 L	Iveco	Trakker AD450 6x6	450hp/336kw @ 1900rpm
Articulated	16,000 L	JCB	Fastrac 185/65	188 hp / 142 kW / 2400rpm
Articulated	16,000 L	Chamberlain	C6100	101 hp / 75.3 kW / 2200rpm
Articulated	16,000 L	Mercedes Benz	MB Trac	125 hp / 93.2 kW / 2600rpm
Articulated	26,000 L	Komatsu	HM300	254 kW 340 HP
Articulated	35,000 L	Komatsu	HM400	254 kW 340 HP



Service Trucks, Fuel Trucks & Tipper Trucks

CATEGORY	CAPACITY	MAKE	MODEL	POWER
Service Truck	8 Compartments	Isuzu	FVZ 260 - 300	221 kW @ 2,400 rpm
Service Truck	8 Compartments	Hino	500	280hp/206kW
Fuel Trailer	1,400 L	-	-	-
Fuel Trailer	2,000 L	-	-	-
Fuel Truck	14,000 L	Hino	500	280hp/206kW
Tipper Truck	11m ³	Isuzu	FVZ 260-300	221 kW @ 2,400 rpm
Tipper Truck	11m ³	Hino	500	280hp/206kW
Tipper Truck	11m ³	Isuzu	FVZ 1400	221 kW @ 2,400 rpm
Side Tipper	21m ³	Howard Porter	-	-
Side Tipper	24m ³	Road West	-	-



Backhoes

CATEGORY	MAKE	MODEL	ENGINE	WEIGHT
4.32m Dig Depth	JCB	4CX	81 kW / 1300rpm	8.178 Tonne
4.8m Dig Depth	Komatsu	WB97R-5E0	74 kW	7.6 Tonne
4.883m Dig Depth	Caterpillar	432E	67 kW / 2200rpm	9.1 Tonne
6.14m Dig Depth	JCB	5CX	74.2 kW / 100 hp	10.6 Tonne



Skid Steer Loaders

CATEGORY	MAKE	MODEL	OPERATING WEIGHT	TIPPING LOAD (35%)
Tracked	Bobcat	T140SJC	3.021 Tonne	635kg
Tracked	Caterpillar	239D	3.372 Tonne	695kg
Tracked	Caterpillar	249D	3.552 Tonne	790kg
Tracked	Caterpillar	259D	4.076 Tonne	915 kg
Wheeled	Komatsu	SK714	2.53 Tonne	650kg
Wheeled	Caterpillar	226B	2.641 Tonne	680kg
Wheeled	Caterpillar	246C	3.348 Tonne	975kg



Telehandlers

LIFTING WEIGHT	MAKE	MODEL	OPERATING WEIGHT	LIFTING HEIGHT
3 Tonne	JCB	531-70	6.9 Tonne	7000mm
3.2 Tonne	Manitou	MT732	7.5 Tonne	6900mm
3.5 Tonne	JCB	535-95	9.1 Tonne	9500mm
4 Tonne	JCB	541-70	7.8 Tonne	7000mm
4 Tonne	Merlo	TF42.7-100	7.5 Tonne	9500mm
4 Tonne	Manitou	MT-X 1440	11.1 Tonne	13530mm
4 Tonne	Manitou	MT-X 1840	11.6 Tonne	17550mm
6 Tonne	Merlo	P60.10EE	9.8 Tonne	9550mm



Forklifts

LIFTING HEIGHT	MAKE	MODEL	OPERATING WEIGHT	LOAD CAPACITY
3000 mm	Hyster	H4.0FT	6.29 Tonne	4 Tonne
4000 mm	Hyster	H5.0FT	7.5 Tonne	5 Tonne
5336 mm	Hyster	H8.00XM	12.48 Tonne	8 Tonne
6200 mm	Hyster	H16.00XM	9.8 Tonne	16 Tonne



Light Towers

LAMP POWER	MAKE	MODEL	ILLUMINATED AREA	RUNNING TIME
1800 W	Promac	Greenlite LED	-	100 hours
4 x 320 W	Generac	V20 Hyper	4500 / 4200 m2	143 hours
4 x 350 W	Atlas Copco	H5	5,000 m2	220 hours



Machine Attachments

CATEGORY	ATTACHMENT
Excavator	GP Bucket
Excavator	Batter Bucket
Excavator	Trenching Bucket
Excavator	Skeleton Bucket
Excavator	Sieve Bucket
Excavator	Screening Bucket
Excavator	Trapezoidal Bucket
Excavator	Tilting Bucket
Excavator	Rock Breaker
Excavator	Auger
Excavator	Misu Heavy Duty Screen Attachment
Excavator	GP Grapple
Excavator	360° Grapple
Excavator	Rock Grapple
Excavator	Hydraulic Grapple
Excavator	Mechanical Grab
Excavator	Hydraulic Grab
Excavator	Sleeper Grab
Excavator	Plate Compactor
Excavator	Compaction Wheel
Excavator	Tree & Stump Mulcher
Excavator	Ripper
Excavator	GPS
Tool Handler	GP Bucket
Tool Handler	Rake Bucket
Tool Handler	Stemming Bucket
Tool Handler	Grain Bucket
Tool Handler	Forks
Tool Handler	Jib
Tool Handler	Log Forks
Tool Handler	Man Cage
Tool Handler	Tyre Grab
Tool Handler	GPS

CATEGORY	ATTACHMENT
Skid Steer	GP Bucket
Skid Steer	Rake Bucket
Skid Steer	Forks
Skid Steer	Bucket Broom
Skid Steer	Auger
Skid Steer	Trencher
Skid Steer	Levelling Attachment
Skid Steer	GPS
Telehandler	GP Bucket
Telehandler	Batter Bucket
Telehandler	Forks
Telehandler	Jib
Telehandler	GPS
Backhoe	GP Bucket
Backhoe	Trenching Bucket
Backhoe	Batter Bucket
Backhoe	Batter Bucket (Digger)
Backhoe	Auger
Backhoe	Forks
Backhoe	GPS
Grader	Roller
Grader	GPS
Tractor	Grid Roller

BROOKS

EQUIPMENT



Quality New & Used Equipment
Australia Wide

NEW EQUIPMENT

Genmac Bellatrix Lighting Tower

The Bellatrix lighting tower features hydraulic lifting system and integrated diesel generator.

Technical Specifications

- Hydraulic lifting lighting tower
- Zinc plating steel telescopic mast
- Mast and light 350° rotation
- Single axle trailer with suspension
- Each lamp has its own On/Off switch
- Sound-proof diesel generator



Chicago Pneumatic CPLT V15 Light Tower

Small in size, with exceptional mobility, and bright light performance.

Technical Specifications

- DC electric winch
- Earthing pin
- Engine block heaters
- Ball, pintle or combo towing hitch
- Auxiliary power outputs



Genmac Queen G100PS Generator

The Genmac Queen G100PS Generator is a 4 cylinder silent generator with autonomy of 16 hours.

Overall Performance

- PRP Continuous power kVA 100
- PRP Continuous power kW 80
- LTP Stand-by power kVA 110
- LTP stand-by power kW 88
- Power factor cos φ 0.8



Genmac Strong G45PS Generator

The Genmac Strong G45PS Generator is a 3 cylinder silent generator with with autonomy of 12 hours.

Overall Performance

- PRP Continuous power kVA - 45
- PRP Continuous power kW - 36
- LTP Stand-by power kVA - 50
- LTP stand-by power kW - 40
- Power factor cos φ - 0.8



Italdem GK4000S Rock Breaker

This hydraulic rock breaker is suitable for a 45t excavator and comes complete with a mounting plate and pins, hydraulic hoses, chisel tool, and blunt tool.

Weight and Dimensions

- Operating Weight 4000 kg
- Height 3539 mm
- Width 800 mm
- Chisel Diameter 185 mm



Husqvarna LH700 ~~RRP \$21,072 + GST~~ **SALE PRICE**

780kg Plate Compactor

\$19,990 + GST
LIMITED TIME ONLY

Forward & Reversible hydraulic plates that are made to effectively handle the most demanding jobs.

- Weight 780 kg
- Power Output 11 kW
- Power Fuel Type Diesel
- Speed 30 m/min
- Frequency 56Hz

COMES WITH 150mm EXTENSION PLATES!



USED EQUIPMENT

JCB 531-70C Telehandler \$72,000 +GST

- Year 2011
- Make JCB
- Model 531-70C
- Weight 6.9 t
- Hours -



Komatsu 33t Excavator \$127,000 +GST

- Year 2007
- Make Komatsu
- Model PC300-8
- Weight 33.8 t
- Hours 10,400



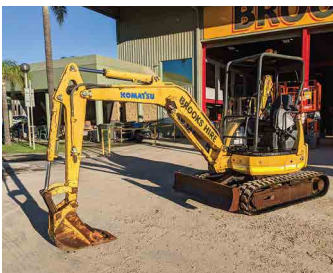
Komatsu WA180-3 Loader \$42,000 +GST

- Year 1995
- Make Komatsu
- Model WA180-3
- Bucket 1.7m³
- Hours 11,450



Komatsu 3t Excavator \$30,000 +GST

- Year 2003
- Make Komatsu
- Model PC30MRX-1
- Weight 3.14 t
- Hours 3,162



Caterpillar Grader \$72,000 +GST

- Year 1985
- Make Cat
- Model 130G
- Width 12'
- Hours 191 (New Hour Metre)



Komatsu WA420-3 Loader \$85,000 +GST

- Year 1997
- Make Komatsu
- Model WA420-3
- Bucket 3.6m³
- Hours 11,648



Authorised Dealers for



SANY



1300 BROOKS (276 657)

@ service@brooksequipment.com.au

www.brooksequipment.com.au